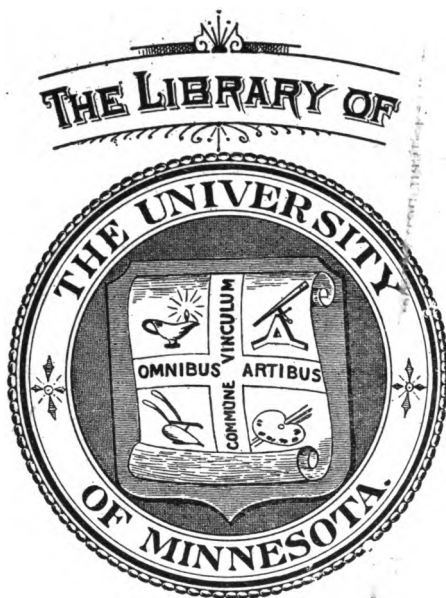

This is a reproduction of a library book that was digitized by Google as part of an ongoing effort to preserve the information in books and make it universally accessible.

GoogleTM books

<http://books.google.com>





CLASS 354.424
BOOK G79



ya But POST OFFICE.

FIFTY-THIRD REPORT
OF THE
POSTMASTER GENERAL
ON THE
POST OFFICE.

Presented to both Houses of Parliament by Command of His Majesty.



LONDON:
PRINTED FOR HIS MAJESTY'S STATIONERY OFFICE,
BY EYRE AND SPOTTISWOODE,
PRINTERS TO THE KING'S MOST EXCELLENT MAJESTY.

And to be purchased, either directly or through any Bookseller, from
WYMAN AND SONS, LTD., FETTER LANE, E.C., and
32, ABINGDON STREET, WESTMINSTER, S.W.; or
OLIVER AND BOYD, EDINBURGH; or
E. PONSONBY, 116, GRAFTON STREET, DUBLIN.

1907.

[Cd. 3624.] Price 5½d.

CONTENTS.

	Page
Annual Returns of Letters, &c. - - - - -	1
Express Delivery Services - - - - -	1
Undelivered Postal Packets - - - - -	2
Home Mail Services - - - - -	2
Foreign and Colonial Post - - - - -	4
Money Orders - - - - -	8
Postal Orders - - - - -	11
Savings Bank - - - - -	12
Telegraphs - - - - -	16
Foreign Telegraphs - - - - -	17
Wireless Telegraphy - - - - -	18
Telephones - - - - -	20
Post Office Buildings - - - - -	26
Post Offices and Letter Boxes - - - - -	27
Stores, Factories, and Contracts - - - - -	27
Staff - - - - -	28
Select Committee on Post Office-Servants - - - - -	29
Health of the Staff - - - - -	29
Finance - - - - -	30
Conclusion - - - - -	30

CONTENTS OF APPENDICES.

A :—	Page
Estimated Number of all kinds of postal packets and telegrams for 1906-7	32
Number of Letters delivered in the United Kingdom (ten years' table)	33
Number of Post-cards delivered in the United Kingdom (ten years' table)	34
Number of Halfpenny Packets delivered in the United Kingdom (ten years' table)	35
Number of Newspapers delivered in the United Kingdom (ten years' table)	36
Number of Parcels delivered in the United Kingdom (ten years' table)	37
Number of Letters registered in the United Kingdom (ten years' table)	38
Number of Parcels registered in the United Kingdom (ten years' table)	39
Numbers of Letters and Parcels registered at and above the fee of 3d. in the United Kingdom (ten years' table)	40
Express Delivery Services in the United Kingdom (ten years' table)	41
B :—	
Estimated Weight of Foreign and Colonial Letters	42
Number of Foreign and Colonial Parcels despatched and received	44
C :—	
Contracts for Home Packet Service	48
D :—	
Contracts for Foreign and Colonial Packet Service	52
E :—	
Number of Mails daily between London and other Post Towns in England and Wales	54
F :—	
Staff of Officers	55
Mortality	57
Retirements through ill-health	58
Average sick absence	59
G :—	
Number of Undelivered Postal Packets (ten years' table)	60
H :—	
Number of Telegrams forwarded in each of the last ten years	61
Number of Telegrams forwarded in each month of the years 1905-6 and 1906-7	62
Telegraph and Telephone Business passing over Government Cables between the United Kingdom and European Countries (ten years' table)	63
I :—	
Value of services rendered for other Government Departments during the last ten years	64
J :—	
Post Office Savings Bank :	
Business during the last ten years	66
Investments in Government Stock (ten years' table)	68
Life Insurance and Annuity Business (ten years' table)	69
Number and Amount of Contracts entered into from the commencement in 1865 to 31st December 1906, and contracts in existence on that date	70
Extract from Parliamentary Paper (214): List of liabilities and of securities on account of Savings Bank Fund	72
K :—	
Money Orders :	
Total Money Order Business in each of the last ten years	74
Number and Amount of Inland Money Orders in the last ten years	75
A (5)49380. Wt. 13353.	A 2

K.—continued.	Page
Money Orders—continued.	
Number and Amount of Government Money Orders in the last ten years	76
Number and Amount of Inland Telegraph Money Orders in the last ten years	77
Number and Amount of Colonial and Foreign Money Orders in the last ten years	78
Amount of Money Order transactions with the various Colonies in the last ten years	79
Amount of Money Order transactions with the various Foreign Countries in the last ten years	80
Number and Amount of Foreign Telegraph Money Orders since 1898-9	82
L. :—	
Number and Amount of Postal Orders issued during the last ten years	84
M. :—	
Telephone Trunk Wires (ten years' table)	87
Provincial Telephone Exchange Wires (ten years' table)	87
Private Wires (ten years' table)	88
N. :—	
Post Office Telephones ; General Capital Account to 31st March 1907	89
O. :—	
Account of London Telephone Exchange System for the year to 31st March 1907	90
Account of Provincial Telephone Exchange System for the year to 31st March 1907	91
Account of Telephone Trunk Line System for the year to 31st March 1907	92
Account of Post Office Telephones—Summary for the year to 31st March 1907	93
P. :—	
Inland Revenue Licenses ; Number and Description of Licenses issued by the Post Office in the last ten years	94
Q. :—	
Revenue and Expenditure of the Postal Services in the last ten years	95
R. :—	
Revenue and Expenditure of the Post Office Telegraphs in the last ten years	96
S. :—	
Revenue and Expenditure of the Postal and Telegraph Services combined in the last ten years	98
T. :—	
Extract from Finance Accounts for year ended 31st March 1907	100
U. :—	
Summary of Statistics for 1906-7 compared with previous year	102

FIFTY-THIRD ANNUAL REPORT.

TO THE RIGHT HONOURABLE THE LORDS
COMMISSIONERS OF HIS MAJESTY'S TREASURY.

MY LORDS,

I HAVE the honour to submit to your Lordships the Fifty-third Annual Report of the Postmaster-General, being an account of the business of the Post Office during the year ended the 31st March 1907.

It is estimated that the number of postal packets delivered in the United Kingdom during the year 1906-7 was as follows:—

Statistics of
Postal
Packets. See
also Appen-
dix A.,
pp. 32-37.

	Number.	Increase per Cent. over 1905-6.	Average No. for each Person.
Letters - - -	2,804,400,000	3·6	64·1
Postcards - - -	831,400,000	3·9	19·0
Halfpenny packets - - -	933,200,000	4·7	21·3
Newspapers - - -	189,100,000	2·0	4·3
*Parcels - - -	104,820,000	3·1	2·4
Total - - -	4,862,920,000	3·8	111·1

The growth of the number of letters has been maintained, the rate of increase having risen by 0·5 this year. The number of postcards, although increasing, is increasing more and more slowly, the rate of increase being 3·9 per cent. this year, as against 9 per cent. in the preceding year, and 19·7 per cent. in 1904-5. The growth in the popularity of pictorial postcards apparently reached its climax two years ago, and the rate of increase appears to have returned to the normal. In the case of the halfpenny packets and the parcels the accuracy of the comparison between the years 1905-6 and 1906-7 is vitiated by alterations which took place in these two posts in the latter year.

The number of letters registered during 1906-7 was 18,491,770, showing a decrease of 0·8 per cent. on the figures for the previous year. The number of parcels registered was 1,009,848—a decrease of 3·6 per cent.

See also
Appendix A.,
pp. 38-40.

EXPRESS DELIVERY SERVICES.

The total number of express services performed was 1,673,258, as compared with 1,578,746 last year. The rate of increase, approximately 6 per cent., is less than that of previous years, the decline being most marked in London, where the

See also
Appendix A.,
page 41.

* This figure includes parcels sent from this country abroad.

number of services rose only from 1,010,815 to 1,048,440, or about $3\frac{1}{2}$ per cent. This result may, I think, be attributed mainly to the increased use of the telephone for messages formerly delivered by express messengers, and to the steps recently taken by the police to restrict the activity of betting agents, a class which makes considerable use of the express service.

UNDELIVERED POSTAL PACKETS.

Statistics.
See also
Appendix G.,
page 60.

The number of undelivered packets, including packets entirely unaddressed and articles found loose, treated during the year ended 31st March 1907 reached the large total of 29,766,394, an increase of 9·84 per cent. over the total for the preceding year. This increase is distributed over all the various classes of correspondence except parcels, which show a slight decrease.

The undeliverable registered letters and letters containing property numbered 353,892, or 10·57 per cent. more than in 1905-6. These letters contained 16,694*l.* 16*s.* 1*d.* in cash and bank notes, and 671,044*l.* 15*s.* 11*d.* in bills, cheques, money orders, postal orders and stamps.

The packets posted without any address and the articles found loose in the post during the year numbered 423,085, an increase of 2·47 per cent. on the number for the preceding year. Included among these were cash and bank notes to the value of 1,493*l.*, and cheques and other forms of remittance to the value of 25,129*l.*

HOME MAIL SERVICES.

Fishguard
and Rosslare
route to
Ireland.

In August last the Great Western Railway Company's new route to Ireland by way of Fishguard and Rosslare was opened for traffic, and advantage was taken of the facilities afforded by the new service for the conveyance of Letter and Parcel Mails. A material acceleration has resulted in the exchange of correspondence between London, Birmingham, Bristol, and South Wales on the one side, and towns in the South of Ireland on the other.

Night Mail
Service to
Oban.

I have been able to make arrangements for the running of a train from Stirling to Oban all the year round instead of only during the three summer months. This train takes on the correspondence conveyed by the Night Mail train from London and the South generally as soon as it reaches Stirling; and its delivery in Oban, and other places served by the train, is thus effected much earlier than under the former arrangements, which gave rise to dissatisfaction.

Frequency
of delivery in
remote Rural
Districts.

It will be remembered that it was announced last year that steps would be taken wherever possible to afford a more frequent delivery of correspondence in remote parts of the United

Kingdom. Much has already been done in this respect, arrangements having been already sanctioned under which about a million letters a year will benefit. Further improvements are under consideration, and will be carried into effect in the near future.

About thirty-five mail services are now performed by Motor Vans, the work being undertaken by contractors, who provide the vans and employ the drivers. Motor vans have proved to be more economical than horse vans when the load is heavy and the distance considerable, and their greater speed is of course an important factor. Use of
motors.

The experiment has recently been tried, with fairly satisfactory results, of hiring Motor Tricycle Carriers for use on light mail services in London. Motor Vans are also being used to an increasing extent by the contractors for the Mail Cart services in London.

The promised simplification of the rules respecting the Halfpenny Packet Post was carried into effect on the 1st of October 1906. Under the new regulations the privilege of the halfpenny rate is extended so as to include practically all formal partly printed documents in general use in business, and the scope of the post is widened in other directions. The public have availed themselves largely of the concessions made. Inland
Halfpenny
Packet Post.

Under the Post Office (Literature for the Blind) Act, 1906, the postage on packets of papers and books impressed for the use of the blind was substantially reduced on and from the 1st of September last. Such packets can now be sent in the Inland Service at the following rates :— “Blind
Literature”
Post.

For a packet not exceeding 2 ozs. in weight, $\frac{1}{2}d.$
 „ exceeding 2 ozs., and not exceeding 2 lbs., $1d.$
 „ exceeding 2 lbs., and not exceeding 5 lbs., $1\frac{1}{2}d.$
 „ exceeding 5 lbs., and not exceeding 6 lbs., $2\frac{1}{2}d.$

The concession has, I am glad to think, given great satisfaction to all who are interested in the welfare of the blind.

On the 18th of February last a simplification was introduced in the treatment of registered correspondence. Formerly a registered packet was advised from one Post Office to another by the name of the person to whom it was addressed and the place of destination. It is now the practice to affix to each packet a label bearing the name of the Office of Posting, and a serial number, and to advise the packet by the particulars on that label. So far, the new method has worked satisfactorily. Treatment
of Registered
Correspondence.

It was arranged at the Postal Union Congress of Rome that this system, already adopted by several foreign Post Offices, should become general throughout the Union in the Autumn of this year.

FOREIGN AND COLONIAL POST.

Postal Union.
Reforms.

Arrangements have been in progress for bringing into operation the postal changes decided on at the sixth Congress of the Postal Union held at Rome in 1906, to which reference was made in my last report.

The details and results of the discussion relating to the transit of correspondence through Union and non-Union Countries have already been laid before your Lordships in the report of the British delegates; and it will perhaps suffice to state that at the Rome Congress, as on previous occasions, the general principles of the Postal Union were consistently developed and maintained.

In accordance with a general understanding the regulations relating to post-cards have already been relaxed by the British Post Office in certain respects; and the other postal reforms agreed to by the Congress are to come into operation on the 1st of October next. The postage for letters sent from the United Kingdom to Foreign Countries will then be 2½d. for the first ounce and 1½d. for every succeeding ounce—a very large reduction on the present rate of 2½d. for the first and each successive half-ounce.* It is hoped at the same time to raise from ½ oz. to 1 oz. the unit of weight for letters passing for a penny under the Imperial Penny Postage scheme.

The congress decided to extend the privileges of the sample post to keys sent singly, consignments of fresh flowers (provided they are not sent for commercial purposes), tubes of serum and pathological specimens rendered innocuous by their mode of preparation and packing; and, in the case of printed matter, further concessions were made as regards the manuscript additions permitted by the regulations.

Reference was made in my last Report to the scheme which was adopted at the last Postal Conference as a means primarily of enabling the sender of a letter addressed to a place abroad to prepay a reply, and also of facilitating the remittance of very small sums. When the scheme comes into force in October next, the public will be able to purchase Reply Coupons at any Post Office, at the price of 3d. each. Each coupon will be exchangeable for a postage stamp of 25 centimes or its equivalent by the Post Office of any country which agrees to accept the scheme.

Canadian
Magazine
Post.

I came to an arrangement some months ago with the Postmaster General of the Dominion of Canada under which the rate of postage on British Newspapers, Magazines, and Trade Journals for Canada, duly registered for the purpose, should be

* For instance, at present a letter for abroad weighing an ounce is charged 5d., a two-ounce letter 10d., a three-ounce letter 1s. 3d. In future (after 1st October) the charge will be one ounce 2½d., two ounces 4d., three ounces 5½d., &c.

reduced from, roughly, 4*d.* a pound to 1*d.* a pound when sent by the direct Canadian Packets. This arrangement came into force on the 1st of May 1907.

This concession was based on the consideration of the very special and peculiar position, geographical and otherwise, occupied by Canada. The rate of postage is less than the cost of the service; but the loss is diminished by the fact that the Dominion Government relieve the British Post Office of the whole cost of the ocean transit by the Canadian subsidized line.

The arrangement has placed the publishers of the United Kingdom in a very favourable position in respect of the transmission of Newspapers, Magazines, and Trade Journals to Canada; and it is anticipated that it will be of considerable advantage, both Imperially, commercially and otherwise. It has already produced a large increase in the number of magazines and newspapers sent to Canada.

The arrangement is an experimental one, and is limited in the first instance to a period of four years.

The invitation for tenders for the Eastern Mail service after the 31st of January 1908 elicited no serious competition; and, with your Lordships' sanction, I have been in negotiation with the Peninsular and Oriental Steam Navigation Company in regard to their offer to provide for an annual subsidy of 305,000*l.* under a seven years' contract, an accelerated service on the existing lines. This subsidy is 35,000*l.* less than the amount paid at present. The duration of the voyage is to be reduced between Brindisi and Bombay to 11 days 6 hours, between Brindisi and Shanghai to 28 days 6 hours outwards, and 28 days 22 hours homewards, and between Brindisi and Adelaide to 26 days 14 hours outwards, and 27 days 2 hours homewards, thus showing, as compared with the present time table, accelerations of 8 hours in each direction on the Bombay section, 34 hours outwards and 24 hours homewards on the China section, and 36 hours outwards and 24 hours homewards on the Australian section. Eastern Mail Service.

With your Lordships' approval a contract has been made with the Royal Mail Steam Packet Company for a fortnightly Mail service between this country and the West Indies, and this service is now in operation. West Indian mail service.

It is hoped that permanent arrangements will be made under which a Colonial Packet service affording regular fortnightly communication between the West Indian Colonies will be provided in direct connexion with the Imperial trans-Atlantic service.

Arrangements have been made with the Royal Mail Steam Packet Company for a reduction of the rates of payment applicable to the conveyance of Mails by their Packets to Brazil and the River Plate, and for the conveyance of Mails by the Company's extra steamships, for the use of which no provision was made in the existing contract with the Post Office. Brazil and River Plate service.

Atlantic
mails. Sea
sorting.

The Sea Post Offices have continued their operations on board the steamships of the White Star and American Lines between the United Kingdom and New York during the past year, and still work satisfactorily. I regret that I have not yet been able to establish similar Post Offices on board the Packets of the Cunard Line. I am considering, in conjunction with the Canadian Post Office, the possibility of establishing Sea Post Offices on board the Direct Canadian Packets.

Transfer of
White Star
Packets from
Liverpool to
Channel
Ports.

For reasons already communicated to your Lordships, it was arranged some months ago that, on and after the 5th of June, the midweek packets of the White Star Line should begin their outward voyage at Southampton, instead of Liverpool, proceeding via Cherbourg and Queenstown to New York. No alteration was necessary in the arrangements for embarking the Mails at Queenstown or in the hours of posting throughout the United Kingdom.

On the homeward voyage, which is not under my control, the Packets now sail from New York directly to Plymouth, where they land the Mails for the United Kingdom and then proceed to Cherbourg and Southampton.

Suspension
of service to
New Zealand
via San
Francisco.

The three-weekly Mail Service between San Francisco and New Zealand has been suspended since February last, as a result of the withdrawal of the subsidy formerly paid by the Government of the United States of America.

At the present time, therefore, the bulk of the correspondence for New Zealand is despatched from this country via Suez, a regular weekly service being maintained in each direction.

Japan and
China ser-
vice via
Vancouver.

The arrangement under which the Canadian Pacific Railway Company provided a monthly service between this country and Japan, via Vancouver, for a subsidy of 60,000*l.* a year was renewed for a period of two years from the 7th of April 1906, subject to various improvements. The Company now maintains fast Packets on the Atlantic as well as on the Pacific in direct connection with the Canadian Railway service; and the transit on all sections of the route has been accelerated, reducing by about 10 days the time occupied in the conveyance of mails between Liverpool and Hong Kong under the previous Contract.

Trans-
Siberian
route.

The Mail service to the Far East by the Trans-Siberian Railway, which was suspended on the outbreak of war between Russia and Japan, has now been resumed. There has been no relaxation of the onerous conditions of payment imposed in regard to the conveyance of Mails by this route; and it has not been practicable, therefore, to make so full a use of the service as would be possible in more favourable circumstances. I have accordingly, with your Lordships' concurrence, restricted the use of the service, as before, to letters and postcards specially

directed for transmission by way of Siberia; and the same course has been adopted by some of the principal Continental countries.

Improvements have been made in the Staff and accommodation of the British Postal Agencies in the Levant, by which Agencies. I trust, their efficiency will be increased.

With the view of improving and extending the British Postal Service in Morocco, the Agencies maintained in that country by the Gibraltar Post Office were transferred on the 1st of January 1907 to the control of the Imperial Post Office. New Agencies have been opened with additional postal facilities; and a regular British courier service is now established between the different Offices.

The number of insured letters despatched to places abroad during the year was 10,531, as against 9,877 during the previous year—an increase of 6·62 per cent.; whilst the number received from places abroad was 54,738, as against 53,160—an increase of 2·97 per cent.

Proposals have been made to Foreign and Colonial Post Offices for raising the maximum amount for which letters and parcels can be insured from 120*l.* to 400*l.*, the limit already adopted in the British inland service; and the question of reducing the scale of fees has likewise been under consideration.

The Parcel Post has been extended to Cuba, Nicaragua, and the Departments of Cauca and Narino on the Pacific coast of the Republic of Colombia.

The postage on parcels for Belgium and Luxemburg has been reduced; and since July 1906 the rates have been 1*s.* for parcels weighing not more than 3 lbs., 1*s.* 6*d.* for those weighing from 3 lbs. to 7 lbs. and 2*s.* for those above 7 lbs. and not above 11 lbs.

Negotiations have been proceeding with the Spanish Post Office for a direct Parcel Post with Spain, to embrace also the Balearic Islands and the Canary Islands. In the meantime parcels for Spain and the Balearic Islands are sent in the mails for France, by which service they are now admissible up to 11 lb. in weight.

The postage on parcels for the Bechuanaland Protectorate sent by way of the Cape Colony has been reduced; and arrangements have been made to extend the Parcel Post to the British Solomon Islands Protectorate.

A Parcel Post twice daily has been established with Sweden by way of Belgium or Holland in addition to the less expeditious service twice or thrice a week by steamer to and from Gothenburg.

Number of
parcels.

The number of parcels sent to and received from places abroad during the year was as follows :—

—					Insured.	Ordinary.	Total.
Despatched	-	-	-	-	182,819	2,393,072	2,575,891
Received	-	-	-	-	134,436	1,337,349	1,471,785
Total	-	-	-	-	317,255	3,730,421	4,047,676

The combined total number of outward and homeward parcels shows a net increase over that of last year amounting to 142,638, or about 3½ per cent. The total number of foreign and colonial parcels insured, namely 317,255, as against 303,946 in the previous year, shows an increase of about 4½ per cent.

The large use of the Parcel Post in the United Kingdom for the transmission of seeds appears now to have extended to the Colonies.

Exports and
imports.

According to the Board of Trade Returns, the value of the goods exported and imported by Parcel Post during the last three years has been as follows :—

—		Twelve Months ended 31st March			Increase in 1906-7, as compared with 1905-6.	Increase in 1906-7, as compared with 1904-5.
		1905.	1906.	1907.		
		£	£	£	£	£
Exports	- -	3,778,558	4,175,661	4,638,917	463,256	860,359
Imports	- -	1,377,943	1,530,368	1,535,661	5,293	157,718
Total	- -	5,156,501	5,706,029	6,174,578	468,549	1,018,077

These figures indicate the increasing importance of the foreign and colonial parcel post.

MONEY ORDERS.

Statistics.
See also
Appendix K.
pp. 74-82.

The number of inland money orders issued during the year ended 31st March 1907 was 10,844,509, representing a sum of 37,997,339l.

The following table shows the number and value of the orders of each kind, with the corresponding figures for the previous year :—

—		Number of Inland Money Orders.			
		1905-6.	1906-7.	Increase.	Rate per Cent.
Ordinary	- - -	7,560,847	7,561,257	410	—
Telegraph	- - -	503,543	523,454	19,911	4.0
Government	- - -	2,694,395	2,759,798	65,403	2.4
Total	- - -	10,758,785	10,844,509	85,724	.8

		Amount of Inland Money Orders.			
		1905-6.	1906-7.	Increase.	Rate per Cent.
		£	£	£	
Ordinary	- - -	26,652,756	27,381,286	728,530	2·7
Telegraph	- - -	1,646,882	1,812,909	166,027	10·1
Government	- - -	8,572,970	8,803,144	230,174	2·7
Total	- - -	36,872,608	37,997,339	1,124,731	3·0

The foreign and colonial orders numbered 2,974,653 and amounted to 8,338,544*l.*, against 2,837,368 orders amounting to 7,740,177*l.* in 1905-6.

The average amount of each kind of order for the year ended 31st March 1907 was— Average amount.

	Amount.	Increase on Previous Year.
Inland orders :—	£ s. d.	s. d.
Ordinary - - - -	3 12 5	1 11
Telegraph - - - -	3 9 3	3 10
Government - - - -	3 3 9	0 1
Foreign and Colonial orders - -	2 16 1	1 6

The total number of money orders paid in the United Kingdom was 12,965,278, representing a sum of 43,799,481*l.* About one-sixth of this amount was paid at the Chief Money Order Office to London bankers.

The increase in the total value of ordinary inland orders— Inland orders. 2·7 per cent.—is slightly larger than in 1905-6, while the number, which then showed a decrease of 37,399, has remained practically stationary during the past year. This is mainly due to the increasing popularity of postal orders as a means of remitting small sums. The growth in recent years of the total amount remitted by means of telegraph money orders was more than maintained in 1906-7.

The money orders issued in this country during 1906-7 for payment in the Colonies show an increase of 52,447*l.* (or 8·1 per cent.) in amount, but the number of orders has decreased by 1,211. There was a decrease of 8,575*l.* in the value of the inward colonial money orders. This decrease would have been greater but for the fact that a number of trade remittances from the West Indies, which would in ordinary course have been sent by bills of exchange, were sent by means of money orders at a time when the bank rate was Colonial orders.

high and the money order poundage was found to be less than the premium charged by banks for bills of exchange. This resulted in an increase of 36,300*l.* (or 35·6 per cent.) in the amount of the orders advised from the West Indies. On the other hand the amount remitted from the South African Colonies during the past year showed a further decline of 228,334*l.*

Foreign orders.

There was a slight increase of 22,428 in the number and 10,783*l.* (0·8 per cent.) in the value of the orders issued in the United Kingdom for payment in foreign countries. The orders transmitted in the reverse direction show a substantial increase of 139,879 (12·0 per cent.) in number and 543,712*l.* (19·1 per cent.) in value. The largest increase was again in the orders issued in the United States.

Foreign telegraph money orders.

The telegraph money orders exchanged with foreign countries show a further large increase, the amount remitted in 1906-7 being 182,066*l.*, or 30 per cent. more than in 1905-6. Of this increase, 21,147*l.* is accounted for by orders exchanged with France, advantage having been taken extensively of the raising of the limit of value for one order to 40*l.*

"Through" orders.

The orders exchanged through the medium of the London office between places having no direct money order service numbered 93,215, and their value was 348,504*l.*, as compared with 96,988 orders of the value of 346,770*l.* in 1905-6. During the year direct services were established by Canada with Denmark, Holland, Mexico, the Bahamas and Western Australia, and by Mexico to France and Italy.

Advices of payment.

During the year arrangements were completed for the introduction both in the inland and international services of a system similar to that already existing in some of the Colonies and in several foreign countries, whereby the remitter of a money order may, on payment of a small fee, receive notice when the order has been paid. The fee has been fixed at 2*d.* in the case of an inland order and 2½*d.* in the case of a foreign or colonial order. The system came into operation on the 1st April last in the inland service, and most of the British colonies and foreign countries agreed to commence the exchange of advices of payment with this country on the same date.

Reduction of Poundage on Foreign and Colonial orders.

In accordance with the announcement made by the Chancellor of the Exchequer last year in his Budget speech, the poundage on money orders payable abroad for amounts not exceeding 1*l.* was reduced from 4*d.* to 3*d.* on 2nd July 1906.

Extensions of service abroad.

During the year money order services have been established with the Republic of Honduras and with Crete. Direct exchange of money orders has been arranged with Chili, Servia, and Surinam, in place of the previous indirect services. The service with Japan has been extended to a number of Japanese

agencies in Manchuria and to Karafuto (Japanese Saghalien), and I hope that the limit for single orders in this service will be raised at no distant date from 10*l.* to 40*l.*

In connection with the revision of the postal services in Morocco, a further extension of the money order system has been carried out, money orders being now issued and paid at Tangier, Fez, Casablanca, Larache, Mazagan and Rabat.

The telegraph money order system has been extended to the Faröe Islands. I hope that arrangements will shortly be matured for the exchange of telegraph money orders with the agencies of the Western Union Telegraph Company in the United States and Canada. It is a matter of regret to me that it has not yet been found possible to extend the telegraph money order system to British colonies.

By an alteration in the method of exchanging advices with Canada the date at which payment of a money order can be effected has been advanced by a day, and in some cases by two days. I am considering the possibility of proposing a similar change of practice to other colonial post offices.

The number of money order offices in the United Kingdom on 31st March 1907 was 15,074, or 153 more than on the corresponding date in 1906.

POSTAL ORDERS.

The number of postal orders issued during the year under review was 102,247,000, and their value amounted to 40,878,000*l.* These figures show increases of 5·1 and 5·4 per cent. respectively over those for 1905-6. The value of the postage stamps affixed was 218,000*l.*

Statistics.
See also
Appendix L.,
pp. 84-86.

The commission on these orders yielded the sum of 415,041*l.*, or 13,821*l.* less than in the previous year. The decrease is due to the reductions in poundage which came into force in July 1906.

Postal orders find increasing favour as a simple and convenient means of remitting small sums of money. As an instance, I may mention that the Hearts of Oak Benefit Society, which makes a large number of small payments to its members, has arranged to use postal orders for the purpose instead of money orders as hitherto. The War Office also has begun, as an experiment, to employ postal orders in place of money orders for certain small local payments.

Arrangements have been completed in the course of the past year for the issue and payment of British postal orders in Cape Colony, Fiji, Southern Rhodesia, Labuan, the Protectorates of Bechuanaland, British East Africa and Uganda, the Soudan and the British Post Office agencies in Morocco. As many as

Imperial
postal order
system.

27,500 orders were paid in Cape Colony during the first six months after the inauguration of the service. British postal orders are now issued and paid in practically every part of the British Empire, with the exception of Canada and Australia.

During the year 1,074,000 British postal orders were issued and 227,511 were paid in the various British Possessions. These figures represent increases of 63 and 72 per cent. over those of the previous year. It is estimated that about one-third of the paid orders originated in the United Kingdom, while the remaining two-thirds comprise orders exchanged between two Colonies or paid in the Colony where they were issued.

POST OFFICE SAVINGS BANK.

Statistics.
See also
Appendix J.,
pp. 66-73.

The deposits and withdrawals made during the year ended 31st December 1906 are shown in the following table, together with the corresponding figures for the previous year:—

Year.	Deposits.		Withdrawals.	
	No.	Amount.	No.	Amount.
1905	16,320,204	£ 42,300,617	7,155,283	£ 42,096,037
1906	17,997,023	43,980,579	8,629,749	43,763,002

The total amount of the deposits thus exceeds that of the withdrawals by 217,577*l.* a result approximately the same as that of 1905, when the excess was 204,580*l.*

The interest credited to depositors in 1906 amounted to 3,667,729*l.*; which, with the excess of deposits over withdrawals, brought the total sum standing to the credit of depositors on 31st December 1906 to 155,996,446*l.*

Depositors have availed themselves extensively of the system of "withdrawals on demand," which came into operation on 3rd July 1905. During 1906 4,758,440 withdrawals, considerably more than one-half of the total number of withdrawals, were made "on demand;" and as a consequence the number of withdrawals made by telegraph fell to 122,802, against 168,036 in 1905 (during only half of which the "on demand" system was in force). The number of withdrawals by return of post was 11,509, against 12,965 in 1905.

During 1906 1,600,105 accounts were opened, and 1,230,370 closed. The net increase in the number of depositors was thus 369,735, as compared with 289,332 in the previous year.

The following table shows the distribution of the accounts remaining open on 31st December 1906, with the average

amount of each, and the proportion of depositors to population :—

	Number of Depositors.	Total Amount to Credit of Depositors.	Average Amount to Credit of each Depositor.	Proportion of Depositors to Population.
		£ s. d.	£ s. d.	
England and Wales -	9,351,739	139,042,722 8 1	14 17 4	1 in 3·70
Scotland - - -	474,619	6,364,708 11 5	13 8 2	1 in 9·96
Ireland - - -	506,426	10,589,015 10 0	20 18 2	1 in 8·66
United Kingdom -	10,332,784	155,996,446 9 6	15 1 11	1 in 4·24

The average amount standing to the credit of each depositor shows a further decrease of 3s. 5d.

During 1906, 272 accounts in the Post Office Savings Bank were opened by friendly societies, against 300 in 1905. The accounts opened by charitable, provident and trade societies numbered 2,542, against 2,292 opened during 1905. Accounts of societies.

At your Lordships' request, a case was submitted to the Law Officers of the Crown for their opinion upon the question whether Trade Unions might be regarded as being entitled to deposit their funds in the Post Office Savings Bank under the same regulations as charitable and provident societies, when their rules do not provide for provident benefits as defined by the Trade Union (Provident Funds) Act of 1893. The opinion was in the affirmative and deposits are now accepted from Trade Unions within the usual extended limits of 100l. in one year and 300l. in all. I understand that the Commissioners for the Reduction of the National Debt have under consideration the question whether they shall, in the exercise of the discretion given to them under the Savings Bank (Charitable Societies) Act, 1859, extend these limits to 250l. in one year and 1,000l. in all.

The accounts opened by Registrars of County Courts numbered 1,441, or 269 more than in 1905. Of these 1,129 were opened under the Workmen's Compensation Acts, with deposits amounting to 82,199l., and 312 under the County Court Acts, with deposits amounting to 20,701l.

Two Trustee Savings Banks, St. Clement Danes and Scarborough, were closed during 1906, and the Trustees of the latter Bank accepted the assistance of my officers in the transfer of accounts. The closing of these Banks caused the total sum transferred from Trustee Savings Banks to reach 43,859l., as compared with 18,736l. in 1905. The sum of 54,732l. was transferred during the year from the Post Office Savings Bank to Trustee Savings Banks. Trustee Savings Banks.

Under the provision of the Savings Banks Act of 1904 arrangements have been made for the transfer of accounts with the Colonies. Transfers with the Colonies.

between the British Post Office Savings Bank and the Government Savings Banks in several Colonies and in Egypt. During 1906 the sum of 118,258*l.* was transferred to the British Savings Bank, including 78,017*l.* from the Transvaal and 30,437*l.* from India, and the sum of 9,929*l.* was transferred in the reverse direction.

Encourage-
ment of
thrift.

The Military Authorities continue to take measures for the encouragement of thrift among soldiers, and I have been glad to place at their disposal for this purpose the facilities afforded by the Post Office Savings Bank. A scheme adopted in 1904, whereby soldiers are enabled to deposit money without leaving the barracks, has not met with much success, the men preferring as a rule to transact their Savings Bank business at a Post Office in the ordinary way. It is proposed shortly to try in certain commands as an experiment a system of voluntary deductions from soldiers' pay to be placed to their credit in the Post Office Savings Bank.

The arrangement for the transmission to this country through the War Office Public Accounts of deposits made by soldiers serving abroad has proved very popular. It has been in existence 10 years, 23,353 accounts having been opened and the sum of 295,219*l.* deposited. During 1906, 34,638 deposits amounting to 53,072*l.* were made in this manner, this being the largest number yet reached in one year.

It is satisfactory to note a further increase both in the number of Penny Banks investing their funds in the Post Office Savings Bank and in the number of schools making use of the stamp deposit system.

Government
stock.

The investments made by depositors in Government stock during 1906 show a large increase, as the result no doubt of the fall in the average price of Government Stock as compared with the previous year. To the same cause may be attributed a decrease in the number and amount of the Sales of Stock effected during 1906. The figures for the last five years are given in the attached table:—

Year.	Investments.		Sales.		Average Price of Consols.
	No.	Amount.	No.	Amount.	
		£		£	
1902	40,893	2,694,447	17,221	1,054,193	94½
1903	47,726	3,131,172	17,742	1,085,578	90½
1904	39,633	2,507,546	18,848	1,131,543	88½
1905	32,301	2,212,285	22,824	1,507,219	89½
1906	39,134	2,674,494	20,004	1,349,044	88½

During the year 50 stock certificates, representing a sum of 9,400*l.* were obtained for depositors; and stock to the amount of

207,085*l.* was transferred to accounts opened for depositors at the Bank of England.

At the close of 1906 the number of stockholders was 145,119 and the amount of stock held was 18,986,199*l.*, being an increase of 5,127 stockholders and 1,108,555*l.* stock.

The number of Immediate Annuities granted during 1906 was 1,797, and their amount was 43,241*l.*, as against 1,840 amounting to 45,488*l.*, in the previous year. The number of Immediate Annuities in existence on 31st December was 27,010. During the year 132 Deferred Annuities were granted amounting to 2,926*l.* The experience of the Post Office, that this class of Annuity does not find much favour with the public, agrees with that of Insurance Companies generally.

Annuities
and life in-
surances.

The life insurances taken out in 1906 numbered 641, and the total sum insured was 28,054*l.*, as compared with 741 insurances for 37,011*l.* in 1905.

The net expenses of management amounted to 598,925*l.*, and the average cost per transaction on the total number of deposits and withdrawals works out at 5*4d.*, the same figure as in 1905. A part of the increase in the expenses is due to a change in the date of paying salaries, which brought 13 monthly payments into the account for 1906. The expenditure (including interest paid to depositors) exceeded the income by 119,870*l.*

On 1st March, with your Lordships' concurrence, I appointed a Committee to consider the question whether the Post Office should provide facilities for the insurance of employers in respect of their liabilities under the Workmen's Compensation Acts, either generally or subject to limitations. Lord Farrer consented to act as Chairman of the Committee, and the other members were the Hon. T. H. Cochrane, M.P., Mr. H. Davies, the Hon. R. D. Denman, Mr. L. J. Hewby, Mr. W. G. Kirkwood, and Mr. W. G. Turpin.

Employers'
Liability.
Report of
Committee.

After going carefully into the question, the Committee felt unable to suggest for immediate adoption any scheme involving Post Office action either as principal or agent. But they suggested that the Post Office might assist in giving publicity to the liabilities imposed by the Act of last Session, which came into operation on 1st July, and which applied the principle of the employer's liability for accidents to many additional classes of workmen and servants. In accordance with this suggestion, I arranged for the exhibition at post offices of a notice, framed in conjunction with the Secretary of State for Home Affairs, drawing attention to the liabilities imposed by the Act, and the advisability of insuring against them, and for the sale at post offices of an explanatory leaflet prepared by the Home Office.

Sub-Postmasters also are encouraged to accept agencies in their private capacity for Insurance Companies undertaking this class of insurance.

I thought it well to invite the Committee to consider also the question whether any steps should be taken to encourage the use of the Post Office system of Life Insurance. This part of their inquiry has been deferred until later in the year.

TELEGRAPHS.

Statistics.
See also
Appendix H.,
pp. 61-63.

During the year ended 31st March 1907, 89,493,000 telegrams passed over the Post Office wires, as compared with 89,478,000 in 1905-6, an increase of .02 per cent.

The following table gives the number and value of each kind of telegram, with the corresponding totals for the previous year :—

Class of Telegram.	Number.			Receipts.		
	1905-6.	1906-7.	(+) Increase or (-) Decrease.	1905-6.	1906-7.	(+) Increase or (-) Decrease.
Ordinary - -	72,191,000	72,480,000	+ 289,000	£ 2,196,850	£ 2,231,312	+ 34,462
Press - -	6,649,000	5,912,000	- 737,000	145,005	137,237	- 7,768
Foreign - -	8,796,000	9,147,000	+ 351,000	400,374	418,026	+ 17,152
Railway, free - -	1,453,000	1,482,000	+ 29,000	—	—	—
„ reduced rate	25,000	28,000	+ 3,000	457	535	+ 78
Government, free - -	364,000	444,000	+ 80,000	—	—	—
Totals - -	89,478,000	89,493,000	+ 15,000	2,743,186	2,787,110	+ 43,924

The estimated value of the railway free telegrams is 59,600*l.* against 59,000*l.* in 1905-6; that of the Government free telegrams 22,700*l.*, against 18,500*l.* in 1905-6.

Press tele-
grams.

The decrease in Press telegrams exceeds 11 per cent. In my previous report I gave some instances of the fluctuations to which this traffic is subject. The present decrease is no doubt mainly due to the restoration of peace abroad and to the absence of any special event at home. The traffic for the previous year was considerably affected by the Far Eastern War, which had not terminated at the beginning of that year, and by the General Election which took place in January and February of last year.

New tele-
graph offices.

During the year the telegraph has been extended to 227 offices in country districts and in the areas of the larger towns. Guarantees have been given for 158 of these new telegraph offices, 69 by local authorities, and 89 by private persons. Under the announcement of last year the guarantee for telegraphs was, except in certain exceptionally costly cases, reduced from a half to one-third of the loss. There are now in the United Kingdom 10,587 telegraph offices at Post Offices, and 2,406 at railway stations and other public places.

The extension to Edinburgh of the underground line between London and Glasgow has been taken in hand on the Edinburgh side. Permanent cable has been provided for the important spur line from Manchester to Leeds. Good progress has been made with the construction of the underground line from London to the landing places of the submarine cables in the West of England; at the end of the financial year, pipes had been laid as far as Bristol, and the cable had been drawn into them to within four miles of Bath.

Interruptions of the telegraph service by severe storms at the beginning of 1907 led to renewed and pressing requests for an immediate extension of the underground telegraph system in various directions. I reviewed the whole position with much care, and finally decided to submit for your Lordship's consideration the following programme of works to be undertaken if possible before the end of the present financial year:—

- (1) The completion of the Western underground line as far as Exeter.
- (2) The provision of a new cable between Warrington and Liverpool to strengthen the connexion of that city with the main underground system.
- (3) The construction of a line between Newcastle and Durham to connect eventually with the main underground system by way of Leeds and Manchester.
- (4) The extension, from the Glasgow side, of the line which will eventually complete the underground system between London and Edinburgh.

FOREIGN TELEGRAPHS.

The number of foreign telegrams sent to and from the United Kingdom during the year (exclusive of certain telegrams dealt with entirely by Cable Companies) was 9,147,000, an increase of 351,000 (or 4·0 per cent) on the number sent during 1905-6.

Statistics.
See also
Appendix H.,
p. 63.

Experiments, which give promise of satisfactory results, have been conducted during the year, with a view to the improvement of the service between London and certain important Continental towns. Direct communication has been established between Liverpool and Antwerp.

Improve-
ments of
communica-
tion.

No new Government cables from the United Kingdom have been laid during the year; but the cable of the Great Northern Telegraph Company between the Shetland Islands and Iceland, via the Farøe Islands, to which reference was made in my last report, has been opened for business; and a new cable has been laid by the Eastern and Western Telegraph Companies from Porthcurno (Cornwall) to the Azores, and thence to St. Vincent

(Cape Verde), with a view to strengthening their line of communication with South America.

During the year arrangements were completed by which messages can be sent between the United Kingdom and South Africa partly by telegraph and partly by post. Outward messages are transmitted by telegraph from the office of origin to Southampton, by post between Southampton and Cape Town, and by telegraph again from Cape Town to their destination. The treatment of messages in the reverse direction is similar. For this combined service a charge is made equivalent to the sum of the ordinary inland telegraph charges in the United Kingdom and in South Africa, with the addition of 1d. for postage between Southampton and Cape Town. The service came into operation on the 1st April 1907, and the use which has been made of it so far seems to show that it is likely to meet the convenience of the public. I hope that the result of this experiment may justify me in suggesting a similar arrangement to other Colonial Post Offices.

WIRELESS TELEGRAPHY.

Licences
under the
Acts of 1904
and 1906.

The Wireless Telegraphy Act of 1904, by which it was made illegal to instal or work wireless telegraph apparatus within the United Kingdom or its territorial waters without a licence from the Postmaster General, was passed for a term of two years only. It was, however, extended to December 1909 by an Act of last year; and steps have been taken for the renewal of the licences granted under the Act of 1904 (particulars of which appeared in a Parliamentary Return published last year) for the period covered by the new Act, except where experiments licensed under the former Act have since been abandoned. During the year I have received 45 new applications for licences, of which 36 were required for experimental purposes only. The latter have all been granted; but I have been compelled to hold over some of the other applications pending the consideration of the whole question of the use of wireless telegraphy in the United Kingdom for commercial communication with ships. This question, again, turns largely on that of the ratification by His Majesty's Government of the International Radiotelegraphic Convention formulated by the International Conference which met at Berlin in October and November last.

The Radio-
telegraphic
convention
framed by
the Berlin
Conference.

This Convention, which is based substantially on the deliberations of a preliminary Conference held in 1903, will for the first time place commercial communication between shore stations and ships at sea on an International basis, affording a guarantee for the exchange of messages, at reasonable rates, between ships and the shore, so far as material circumstances admit, without regard either to nationality or to the system

employed; and for the acceptance, transmission and delivery of such messages by means of the ordinary telegraph systems of the various contracting countries.

The formulation of detailed Regulations for the prevention of confusion and interference under the scheme of general intercommunication contemplated by the Convention, together with adequate provision for enforcing those regulations, was a matter of great importance to this country, in view of the extent to which wireless telegraphy has already been developed in the narrow waters of the English Channel. With this object, amendments to the draft originally laid before the Conference were proposed by the British Delegates, and were readily accepted by the Conference. To these was added a further important provision proposed by the British Delegates whereby the right was given to such Governments as desired to possess it of exempting from the obligation of general intercommunication any station which they might at any time think fit, on condition that some other station shall be open for general intercommunication in the same region.

The Convention does not apply to naval or military stations, or to commercial stations which are not open for communication with ships, save that all stations, without exception, are required to carry on their operations as far as possible without interfering with other stations and to accept messages from ships in distress.

Some doubt having been expressed in the course of a debate in the House of Commons as to the extent to which the objects aimed at by the Government had been secured by the Convention, and especially as to its probable effect on the existing organisation of the Marconi Company, a Select Committee of the House was appointed early in the present Session to consider the question. This Committee has reported in favour of the ratification of the Convention, and the Government has announced its intention of ratifying the Convention.

The Post Office has continued during the year to collect and deliver the Marconi Company's Telegrams to and from ships at sea under the arrangements settled in 1904. The total number of outward telegrams dealt with during the year was 1,140, as compared with 558 in 1905-6, and of inward telegrams 15,853 as compared with 11,094.

The Post Office stations for communication between Tobermory and Loch Boisdale (Hebrides), and between Hunstanton and Skegness, to which I referred in my last Report, have been completed and handed over by the contractors. So far as can be stated at present, they seem likely to work satisfactorily; but it is too soon yet to say whether they will fulfil all the requirements of ordinary inland traffic, for which they are intended.

The Marconi Company's Telegrams.

Wireless Telegraphy applied to ordinary inland traffic.

TELEPHONES.

Trunk lines. (See also Appendix M., p. 87). The number of trunk wire centres open on the 31st March 1907 was 533, as compared with 487 on the corresponding date in 1906. During the year 288 new trunk circuits were provided, bringing the total number in use up to 2,043, containing about 73,000 miles of double wire. The capital expenditure on the purchase and development of the trunk wire system up to the 31st March last amounted to 3,376,252*l.*, including an expenditure during the past year of 478,749*l.*

Trunk line conversations. The total number of conversations which took place over the trunk wires during the year 1906-7 was 19,803,300, showing an increase of 10·18 per cent. upon the number for the previous year. The gross revenue derived from the trunk service was 480,658*l.* against 449,004*l.* in 1905-6, an increase of 7·05 per cent. The average value of each conversation was slightly less than in 1905-6, 5·82*d.* instead of 5·97*d.*

Extension of the Post Office system in the Provinces. During the year Post Office Telephone Exchanges were opened in the Provinces at the following places :—

Armagh.	Halesworth.	Pitlochry.
Aylsham.	Harleston.	Port Erroll.
Bedale.	Haverhill.	Ramsey.
Buckingham.	Horncastle.	Sandiway.
Bungay.	Hunstanton.	Shardlow (Derby).
Caputh.	Killarney.	Shepton Mallet.
Chorley Wood.	Lanchester.	Somerby (Oakham).
Cookstown.	Langham (Oakham)	*South Brent
*Coxley (Wells).	Ledbury.	(Devon).
Dipton (Consett).	Lindfield.	*Stobo (Peebleshire).
Diss.	Liskeard.	Stony Stratford.
Dungannon.	Long Sutton.	Street (Somerset).
Dunkeld.	Ludlow.	Sutton Bridge.
Dunmow.	*Newbridge-on-Wye.	Wells.
East Kirkby.	Newport Pagnell.	Winslow.
Eden Bridge.	Olney.	Wolverton.
Eye.	Omagh.	Woodhall Spa.
Girvan.	Osborne House	Wymondham.
Glastonbury.	(I. of Wight).	
Greystoke.	*Otterburn.	

Besides these 56 exchanges, 23 public call offices connected with the Post Office trunk line system were opened at places where the number of prospective subscribers was not sufficient to warrant the opening of exchanges.

In the districts of Melton Mowbray, Chipping Norton, Malton, and Bourne, it has been possible to give a telephone

* In the cases marked with an asterisk the extension was carried out under guarantee.

service restricted to the local area by utilising the wires erected for the transmission of telegrams—which are not numerous—between the central town and the Post Offices of surrounding villages. The growing use made of such rural Call office systems shows that the additional facilities thus afforded are appreciated.

As stated in my last report, the Postal reforms announced by the Chancellor of the Exchequer last year in the Budget Speech included the introduction of more liberal terms for the extension of the telephone system to outlying places under guarantee. Whereas formerly the guarantors of telephone extensions were required to bear the whole of any loss incurred, two thirds of it is now borne by the State. The telephone has thus been brought within the reach of many fruit-growing and agricultural districts, and I hope that some of the guaranteed Call offices will in time develop into small exchanges.

Modification
of guarantee
terms.

The total number of subscribers to the Post Office Provincial Telephone Exchanges on the 31st March 1907 (excluding those at Glasgow and Brighton), was 10,010, as compared with 8,425 on the 31st March 1906; and the number of telephones rented increased during the year from 10,380 to 12,006.

Number of
exchange
subscribers
(See Ap-
pendix M.,
p. 87).

The foregoing figures represent the normal growth of the Post Office Provincial System due to the opening of exchanges in places hitherto without a telephone service, and to the accession of new subscribers to existing exchanges. But, as your Lordships are aware, that system has during the past year received important additions through the purchase of the telephone undertakings of two municipal authorities. The Glasgow Corporation system, which was worked by the Corporation on my behalf from the 1st June (the nominal date of purchase) up to the 10th September 1906, included on the 31st March last 11,103 subscribers' lines with 12,964 telephones. The system of the Brighton Corporation, which passed under my control on the 22nd October, included at the end of the financial year 1,542 subscribers' lines with 1,884 telephones.

Purchase of
Glasgow and
Brighton
Municipal
Telephone
Systems.

Arrangements are being made for local intercommunication between the subscribers to the Exchanges of the Post Office and the National Telephone Company both at Glasgow and Brighton.

The Agreement made in 1905 for the purchase of the National Telephone Company's system at the end of their license in 1911, provides for local intercommunication in the meantime between all the exchanges of the two systems, subject to the condition that the rates of charge are to be the same for both systems. After considerable discussion with the Company a new scale of rates was adopted for this purpose on the 1st May. These rates are based on the principle of a measured service, under which each subscriber pays according to the quantity and

Telephone
Rates.

quality of the service he requires. He may contract for any number of calls from 400 upwards, and he may share a line with another subscriber, or he may rent a line for his own exclusive use. The large user can have a private branch-exchange connected by two or more lines with a public exchange, and with extension instruments to the different parts of the subscriber's establishment. By intercommunication between these extension stations, a very convenient internal service is provided in addition to the Exchange service, and this is a great convenience in hotels and large places of business. The new rates do not include the Unlimited Service or "Flat" Rate, except for lines to private residences. No satisfactory flat rate can be devised for lines on which the calls may vary from a few hundreds to many thousands a year. An equal rate for such varying conditions must necessarily be very unequal and unfair between different subscribers, the charge being unduly low in one case and excessive in another. Even if a fair average rate could be fixed at any one time, it would soon become unsatisfactory because the cost of the telephone service increases in greater proportion than the number of subscribers or the number of calls, owing to the increasing complexity of lines and apparatus as an exchange system grows. Another very important objection to the flat rate is that it induces subscribers to overload their lines. It has been one of the chief difficulties and drawbacks of the telephone service in this country that the lines of large users are so frequently engaged when calls are made by other subscribers. This condition not only increases the cost of the service by causing useless operating work, but it is also a source of unnecessary trouble and inconvenience to the public.

The principle of a measured service now adopted for the telephone system is the same as that which has long been in use for the supply of water, gas, and electric light. It has been adopted almost universally in the United States, where it has led to an enormous increase in the number of telephones in use and the same principle is becoming generally recognised in the principal countries of Europe.

A reduction has been made in the charges for trunk calls at night. In 1903 it was made the practice to allow a double period of six minutes instead of three minutes for each trunk call between 8 p.m. and 6 a.m.; and a considerable increase occurred in the traffic between those hours. It seemed, however, that some further modification might be made with advantage as regards the more expensive calls, and it was therefore decided to allow calls for single periods of three minutes at half the ordinary rates, with a minimum of 6d., between 7 p.m. and 7 a.m. Thus, a call between London and Liverpool or Manchester, which ordinarily costs two shillings, can be made for one shilling between those hours. A call from Glasgow to London will cost two shillings and threepence

instead of four shillings and sixpence, and a call from Hull to London one shilling instead of two shillings. The growth of traffic from this change has been considerable and the loss of revenue will probably soon be made good. The arrangement has been found to be of considerable advantage to the public, as it provides cheap facilities for communication at times which are convenient for social and domestic conversation.

The Corporation of Swansea has applied for my permission to sell its telephone system to the National Telephone Company, and I have agreed to the sale subject to the acceptance by the Company of certain conditions intended to safeguard the interests of the taxpayer when the combined system is purchased by the State at the end of 1911.

Other
Municipal
Systems.

The following table, based on returns furnished by the Corporations concerned, gives the number of telephones connected with the exchanges of each of the municipal systems in existence on the 31st March last.

Name of Municipality.	Date of opening Exchange System.	Number of Telephones.
Hull - - - -	October 1904 - - -	2,128
Portsmouth - - - -	November 1902 - - -	2,553
Swansea - - - -	June 1903 - - -	1,432

The sum received as rental in respect of private wires was 183,008*l.*, as compared with 177,111*l.* for the preceding year.

Private wires.
(See Appendix
M., p. 88.)

The number of telephones connected with the Post Office Telephone system, in the Metropolitan area increased during the past year from 32,879 to 41,236, and additional subscribers are being connected at the rate of about 150 a week. New exchanges were opened during the year at Harrow, Esher, Hounslow, Malden, and Wembley.

London
telephone
service.

There were 425 Post Office Call Offices open in the London area on the 31st March last, and the number of calls made from Call Offices increased by 42 per cent.

The length of the underground pipes which had been laid in the Metropolitan area for telephone purposes up to the 31st March last was 2,030 miles, 349 miles of which were laid during the year. Cables containing 317,789 miles of wire have been laid, including 69,066 miles rented by the National Telephone Company, and, 52,255 miles provided for telegraphs, private wires, &c. The lines of the present subscribers and the junction lines connecting exchanges amount to 111,516 miles, and 84,952 miles of wire remain available for the future development of the telephone system. About 65,000 miles of telephone wire were laid by the Post Office in the Metropolitan area during last year.

Extent and
cost of un-
derground
system.

The average cost of constructing an exchange circuit in that area (including the installation of telephone instruments and of exchange apparatus but excluding the provision of spare plant), has been 33*l.* 5*s.* 2*d.* as compared with 35*l.* 13*s.* 10*d.* in the previous year. Taking into account the whole system, including spare plant of all kinds, the capital expenditure per station (*i.e.* per telephone connected with an exchange) stands now at less than 50*l.*, as against 54*l.* and 64*l.* in the two preceding years. Thus the anticipation expressed in earlier Reports, that the expenditure per station would continue to diminish as spare plant was brought into use, has been fully realised. The proportion of spare plant is still, however, very considerable.

Income and
expenditure.

Accounts, for the year ended 31st March 1907, of the income and expenditure relating to the London service, the Provincial Exchange system, and the Trunk system, will be found in Appendix O. (pages 90-93).

These accounts are presented in the same form as in preceding years, with some slight modifications for the sake of greater clearness.

The question of the financial results, both of the telegraph and telephone services, was raised in recent discussions in the House of Commons on the Telegraph (Money) Bill. I undertook to consider whether forms of accounts could be devised to show these results more fully and clearly; and, as your Lordships are aware, I am inviting your assistance for the examination of this matter.

The year's working of the whole Telephone system shows a balance of 451,787*l.* after payment of the working expenses, while the estimated amount required to provide for depreciation of plant and interest at 3 per cent. on the capital expenditure of 7,255,000*l.* is 432,726*l.*

Telephone
royalty.

The amount of royalty received during the year from the National Telephone Company was 240,331*l.*, and from other licensees 3,101*l.*

National
Telephone
Company.

The amalgamation of the systems of the Post Office and National Telephone Company, which is to take place at the end of 1911, is being kept steadily in view. I am providing for the Company on rental terms, in both the Metropolitan and Provincial areas, an increasingly large number of wires, which will be available for immediate use as part of the Post Office system when the transfer is effected. In other cases the Company is providing wires for the Post Office. Endeavours are also being made in some instances to find accommodation in Post Office buildings for call-boxes and small exchanges of the Company. By these means not only is it possible to avoid present expenditure on cables and other plant which will not be needed after the transfer, but the actual arrangements for

the transfer will be rendered less complex and less liable to result in inconvenience to the users of the telephone service.

The following estimated figures show the extent to which the telephone is being used for sending messages for onward transmission as telegrams and express or ordinary letters :—

Use of the telephone for postal and telegraph purposes.

—	1905-6.	1906-7.	Increase (+) or Decrease (-).
Telegrams - -	3,123,700	3,797,600	+ 21·6 per cent.
Express letters - -	89,800	89,300	- 0·6 „
Ordinary letters - -	7,700	14,600	+ 89·6 „

It is estimated that during the past year about one-and-a-half million telegrams were delivered to the addressees over their private telephone circuits.

The capital sums (£7,300,000 in all) voted by Parliament under the Telegraph Acts of 1892-1904 for the extension of the Telephone system are nearly exhausted, and an Act has been passed in the present session to authorise the expenditure of a further sum of 6,000,000*l.* This sum will, I hope, suffice for the development of the system until 1911. In that year, or possibly at an earlier date, it will be necessary to introduce legislation for providing funds and for other matters connected with the purchase of the system of the National Telephone Company.

Telephone Capital Account. (See Appendix N., p. 89).

The wayleave difficulties, upon which my predecessors and I have been compelled to comment in our annual reports, continue to cause embarrassment and delay in the execution of telephone works. Anxious as I am that the amenities of the country should be preserved, I cannot ignore the experience of several years, which shows that it is at present electrically impossible to maintain an efficient trunk telephone service over long distances unless the wires are kept overhead. The failure to recognise this necessity involves me in regrettable differences with local authorities and private landowners; and important towns which may be many miles distant from the scene of the difficulty are meanwhile left with inadequate telephone facilities.

Again, while, on the one hand, I am repeatedly urged to provide a cheap local telephone exchange service, I am, on the other, often assailed with protests against the erection of overhead wires in the outskirts of large towns. In many of these cases I am unable to find any reasonable grounds for the protests, and I am forced to the conclusion that they proceed solely from a general dislike of overhead wires. I can only repeat that these local lines, serving often no more than two or three subscribers, can only be placed underground at a cost which would compel me to increase the present scale of charges

of the telephone service. The same wayleave difficulties occur also in regard to telegraph lines.

POST OFFICE BUILDINGS.

New and
enlarged
offices in
London.

During the past year the excavations for the foundations of the new General Post Office (King Edward's Building) have been commenced. Operations have been begun, and are being pressed forward, for the addition of a fifth floor to the General Post Office South (Carter Lane Block) to meet the growth of the London Telephone Service. Considerable progress has been made with the new buildings for the Central Power Station at Blackfriars. The new office for the Northern District has been occupied, and the enlargement of the Eastern District Office has been completed.

Building operations have been begun in connection with the enlargement of the Paddington District Sorting Office; and plans for the enlargement of the South Western District Office are now under consideration.

As regards the provinces, the new Parcel Office at Glasgow and the new Head Office at Aberdeen have been completed and occupied. A new office at Newport (Mon.) has just been opened.

Work is proceeding in connection with the extension of the General Post Office at Edinburgh, the erection of a new Head Office at Sheffield, the erection of a new Letter Sorting Office at Manchester, and the enlargement of the Head Post Office at Nottingham. Plans are now being settled for the enlargement of the General Post Office at Dublin, and of the Head Post Offices at Belfast, Bristol, and Newcastle-on-Tyne.

During the year 73 new buildings specially erected for Post Office purposes were completed and occupied; and the leases of 39 existing buildings were taken over by the Department, after alterations had been effected to adapt them for Post Office purposes. Additional accommodation has been provided in various parts of the country to meet the needs of the Surveying and Engineering Branches. Thirty-five Crown Post Offices have been enlarged or improved, and 93 Crown Post Offices are in course of erection or enlargement.

The expenditure out of the Post Office Vote for the purchase of sites and buildings during the year amounted to 51,887*l.*, of which 9,140*l.* was spent in London.

Expenditure. During the year the expenditure by the Commissioners of Works and Public Buildings on the erection of new Post Office buildings and on the enlargement and maintenance of existing buildings amounted to 498,516*l.* in Great Britain and 19,902*l.* in Ireland.

POST OFFICES AND LETTER BOXES.

The total number of Post Offices open on the 31st March 1907 was made up as follows:—

—	London.	England and Wales.	Scotland.	Ireland.	Total.
Head Offices -	11	603	136	117	867
Branch Offices -	109	128	29	10	276
Town Sub-Offices -	917	4,491	374	222	6,004
Country Sub-Offices -	—	11,763	1,848	2,669	16,280
Totals -	1,037	16,985	2,387	3,018	23,427

Of these offices 160 were opened during the year. Money Order and Savings Bank business is transacted at 15,074 offices, and Telegraph business at 10,587, as well as at 2,406 offices at railway stations and other public places.

The number of letter boxes was increased during the year from 40,302 to 41,720.

Experiments are being made with various descriptions of automatic machines for the sale of postage stamps and post-cards. They have not been in progress sufficiently long to enable me to express any opinion upon the probable utility of the machines.

STORES, FACTORIES, AND CONTRACTS.

The percentage of the total amount spent on the purchase of telegraph and telephone stores which has gone to home manufacturers again shows an increase. The percentage, which was 81 in 1904-05 and 92½ in 1905-06, rose last year to 95½.

With the view of encouraging workmen and other Post Office servants to bring forward any suggestion which they think may be of advantage to the service, I have established an Awards Committee for the consideration of suggestions for improvements in machinery, tools, apparatus, fittings or equipment, and for recommending the grant of awards in those cases in which the suggestions seem to be of sufficient merit. The Committee may recommend awards ranging from 5s. to 15l. in any one case, and if they consider a suggestion deserving of an award exceeding 15l., they may recommend it for special consideration.

The scheme is proving successful ; no fewer than 342 suggestions were dealt with by the Committee prior to the 31st March last, and in 111 cases awards were made.

I continue to give much attention to the question of the Post Office various clothing and other Post Office contracts, with a view to contracts.

the improvement of the condition of the workers. The action of the Inspector, whom I appointed last year, has been beneficial in enabling me to obtain information in reference to, and to exercise some control over the conditions of labour. Careful attention has also been given to the "fair wages" clause.

Mail Cart
drivers in
London.

I am glad to be able to state that I have concluded arrangements with the contractors for the London mail cart services under which a substantial improvement has been effected in the drivers' wages and hours of duty.

STAFF.

Numbers.
See also
Appendix F,
pp. 55, 56.

The number of persons on the establishment of the Post Office on 31st March 1907 was 88,208, of whom 12,282 were women. The number added during the year under review was 2,130.

In addition, there were 110,970 persons filling unestablished situations (some of them employed only for a portion of the day), of whom 29,700 were women. The number added during the year to the unestablished force was 1,616.

The total number of persons employed wholly or in part in the Post Office on the 31st March 1907 was thus 199,178.

Dismissals.

The number of persons dismissed during the year was 762, whilst 198 were deprived of good-conduct stripes, as compared with 831 and 219 respectively in the previous year. Dishonesty accounts for 30 per cent. of the whole number of dismissals, whilst intemperance is responsible for 27 per cent. of the dismissals of adult persons, and 61 per cent. of the losses of good-conduct stripes.

Retiring
gratuities.

During the year 94 grants, amounting to 1,602*l.* 19*s.* 6*d.* in all, were made from the fund placed at my disposal by Parliament for awarding gratuities on retirement to unestablished officers of the Post Office who are in poor circumstances and who are not eligible for the benefits of the Superannuation Act of 1887.

Post Office
medical
system.

The Post Office medical system has been still further extended, the number of Medical Officers having increased during the year under review from 2,971 to 3,253.

I have had under consideration the question whether an age limit should be applied to Medical Officers to the Post Office. It appeared to me that many of the considerations which make it desirable to place such a limit upon the service of Civil Servants generally apply with no less force in the case of Medical Officers; and I have decided therefore to determine the appointment of a Medical Officer at 70 years of age at latest, and to review annually the efficiency of Medical Officers over 60 years of age, with the intention that the services of

those only who are found to be thoroughly efficient shall be retained. I have endeavoured to apply this rule with due regard to the circumstances of existing holders of the post of Medical Officer to the Post Office.

SELECT COMMITTEE ON POST OFFICE SERVANTS.

As stated in my last Report, a Select Committee of the House of Commons was appointed in March 1906 "to inquire into the wages and position of principal classes of Post Office Servants and also of the Unestablished Sub-Postmasters; to examine, so far as may be necessary for the purpose of their Report, the conditions of employment of these classes; and to report whether, having regard to the conditions and prospects of their employment, and, so far as may be, to the standard rate of wages and the position of other classes of workers, the remuneration they receive is adequate or otherwise." The Committee examined a large number of witnesses and its Report has just been presented.

HEALTH OF THE STAFF.

Influenza was again epidemic during certain parts of the year, and was the cause of thirteen deaths and four retirements. Sixty-three deaths and 118 retirements were due to diseases of tubercular origin.

The figures in the following table and in the second and succeeding tables of Appendix F. relate to the whole of the staff at the towns where departmental medical officers are employed, namely, 114,649 men (73,263 established and 41,386 unestablished) and 15,446 women (11,977 established and 3,469 unestablished):—

	Percentage of Sick Absentees.		Average Amount of Sick Absence per Sick Officer (in days).		Average Absence per Officer employed (in days).	
	Men.	Women.	Men.	Women.	Men.	Women.
1. Established Staff :						
England—						
Chief Office - -	58	80	12·6	12·4	7·4	9·9
Metropolitan Districts	64	81	13·8	14·1	8·9	10·1
Country - -	46	59	15·4	17·3	7·1	10·2
Scotland - -	35	46	16·9	15·6	6·0	7·2
Ireland - -	54	69	16·8	20·2	9·2	13·9
2. Unestablished Staff :						
England—						
Chief Office - -	62	64	9·3	11·2	5·8	7·2
Metropolitan Districts	54	38	9·2	13·2	5·0	5·1
Country - -	33	32	12·1	15·7	4·0	5·0
Scotland - -	39	18	9·1	16·7	3·5	3·0
Ireland - -	33	31	11·0	15·5	3·6	4·8

The following table gives particulars as to the deaths and retirements during 1906 among the whole of the established staff in the United Kingdom :—

	Number of Persons.		Average Age on Death or Retirement (in years).		Average Length of Service (in years).	
	Men.	Women.	Men.	Women.	Men.	Women.
Deaths - - -	231	18	39	32	18	11
Invalided - - -	585	152	43	37	22	18
Superannuated at age of 60 and upwards.	252	11	61	60	36	29

The deaths represent a death-rate of 3·0 per 1,000 among men and 1·5 per 1,000 among women.

The number of women who retired on marriage in 1906 was 328, with an average age of 28 and an average service of nine years.

The number of candidates for Post Office employment examined by the Department's medical officers was 3,815 men and 1,192 women, of whom 249 men (6·5 per cent.) and 235 women (19·7 per cent.) were rejected.

FINANCE.

See also
Appendices
Q., R., S., and
T., pp. 95-
101.

The postal revenue of the year, including the value of services rendered to other Departments, was 17,361,042*l.*, an increase of 297,019*l.* on that of the previous year. The postal expenditure was 12,289,787*l.* an increase of 440,775*l.* on that of the previous year. The net profit was thus 5,071,255*l.*, or 143,756*l.* less than last year.

The telegraph and telephone revenue of the year, including the value of services rendered to other Departments, was 4,369,230*l.*, an increase of 217,850*l.*; and the telegraph and telephone expenditure was 5,021,285*l.*, an increase of 129,086*l.* upon the previous year. The net deficit on working the telegraphs was thus 652,055*l.*, or 88,764*l.* less than last year.

The net revenue from the postal and telegraph services combined was 4,419,200*l.* If the interest on the capital expended on the purchase of the telegraphs—10,867,644*l.*—be taken into account, the net profit was 4,147,509*l.* or 54,992*l.* less than last year.

These figures are, necessarily, partly estimated.

CONCLUSION.

I desire in conclusion to add that the efficient conduct of the Post Office is only rendered possible by the spirit of loyalty to

the public service which I find animates all classes of its officers.

I also wish to place on record the valuable services rendered to the Post Office by Mr. H. Buxton Forman, C.B., Joint Second Secretary and Controller of Packet Services, and by Sir John Gavey, C.B., Engineer-in-Chief, both of whom have recently retired.

I have the honour to be,

My Lords,

Your Lordships' obedient Servant,

SYDNEY BUXTON

August 1907.

APPENDIX A.

STATEMENT showing the ESTIMATED NUMBER of LETTERS, POST-CARDS, HALFPENNY PACKETS, NEWSPAPERS, PARCELS, and TELEGRAMS dealt with, and the Average Number per Head of the Population for the year ended the 31st March 1907.

	Population.	Letters.		Post-cards.		Halfpenny Packets.		Newspapers.		Parcels.		Telegrams.	
		No.	No. per Head of Population.	No.	No. per Head of Population.	No.	No. per Head of Population.	No.	No. per Head of Population.	No.	No. per Head of Population.	No.	No. per Head of Population.
England and Wales	34,646,236	2,397,700,000	69·2	706,200,000	20·4	790,100,000	22·8	145,900,000	4·2	86,939,000	2·5	74,970,000	2·2
Scotland	4,726,070	243,400,000	52·6	91,500,000	19·4	101,500,000	21·5	23,300,000	4·9	11,102,000	2·3	9,203,000	1·9
Ireland	4,889,066	153,300,000	36·1	34,700,000	7·9	41,600,000	9·5	19,900,000	4·5	6,758,000	1·5	5,320,000	1·2
Totals	43,761,392	2,804,400,000	64·1	831,400,000	19·0	933,200,000	21·3	189,100,000	4·3	104,819,000	2·4	89,463,000	2·0

Note.—Of the total yearly number of Letters, Post-cards, Halfpenny Packets, Newspapers, Parcels, and Telegrams, the percentage of each is as follows:—

Letters	-	56·6	Halfpenny Packets	-	-	18·9	Parcels	-	-	2·1
Post-cards	-	16·8	Newspapers	-	-	3·8	Telegrams	-	-	1·8

APPENDIX A.—continued.

Letters Delivered.

STATEMENT showing the ESTIMATED NUMBER of Letters delivered in the UNITED KINGDOM in each of the last TEN YEARS.

Year.	England and Wales.						Scotland.	Increase per cent.	Average number to each person.	Ireland.	Increase per cent.	Average number to each person.	United Kingdom.	Increase per cent.	Average number to each person.	
	Country Offices.	In-crease per cent.	London District.	In-crease per cent.	Total.	In-crease per cent.										
1897-98	1,120,300,000	6·8	590,900,000	6·0	1,711,200,000	6·5	55	177,400,000	5·3	43	123,700,000	27	4·8	2,012,300,000	6·3	59
1898-99	1,242,000,000	10·8	617,700,000	4·5	1,859,700,000	8·7	59	190,600,000	7·4	45	136,500,000	30	10·3	2,183,800,000	8·6	54
1899-1900	1,276,300,000	2·7	632,600,000	2·4	1,908,900,000	2·6	60	193,900,000	3·3	46	141,100,000	31	3·4	2,246,800,000	3·7	55
1900-01	1,312,700,000	2·9	664,300,000	5·0	1,977,000,000	3·6	61	202,400,000	2·8	47	144,900,000	32	2·2	2,322,600,000	3·4	57
1901-02	1,392,700,000	6·1	692,100,000	4·2	2,084,800,000	5·5	64	218,100,000	7·8	49	145,600,000	33	3·1	2,451,200,000	5·5	59
1902-03	1,465,900,000	5·2	742,000,000	7·2	2,207,900,000	5·9	67	221,900,000	1·7	49	149,800,000	34	·8	2,579,500,000	5·2	61
1903-04	1,487,700,000	1·5	730,600,000	dec. 1·5	2,218,300,000	·5	66	226,200,000	1·9	49	153,100,000	35	2·2	2,697,600,000	·7	61
1904-05	1,511,800,000	1·6	727,200,000	·5	2,239,000,000	·9	68	229,700,000	1·5	50	156,900,000	35	1·8	2,824,600,000	1·0	61
1905-06	1,559,900,000	3·2	753,400,000	inc. 3·6	2,313,300,000	3·3	68	233,100,000	3·7	51	155,800,000	36	dec. 1·1	2,707,200,000	3·1	62
1906-07	1,639,700,000	4·5	767,000,000	1·8	2,397,700,000	3·6	69	248,400,000	4·3	53	158,300,000	36	inc. 1·6	2,894,400,000	3·6	64

APPENDIX A.

STATEMENT showing the ESTIMATED NUMBER of LETTERS, POST-CARDS, HALFPENNY PACKETS, NEWSPAPERS, PARCELS, and TELEGRAMS dealt with, and the Average Number per Head of the Population for the year ended the 31st March 1907.

	Population.	Letters.		Post-cards.		Halfpenny Packets.		Newspapers.		Parcels.		Telegrams.	
		No.	No. per Head of Population.	No.	No. per Head of Population.	No.	No. per Head of Population.	No.	No. per Head of Population.	No.	No. per Head of Population.	No.	No. per Head of Population.
England and Wales	34,646,236	2,397,700,000	69.2	705,200,000	20.4	790,100,000	22.8	145,900,000	4.2	86,859,000	2.5	74,970,000	2.2
Scotland	4,726,070	248,400,000	52.6	91,500,000	19.4	101,500,000	21.5	25,300,000	4.9	11,102,000	2.3	9,203,000	1.9
Ireland	4,389,086	158,300,000	36.1	34,700,000	7.9	41,600,000	9.5	19,900,000	4.5	6,753,000	1.5	5,320,000	1.2
Totals	43,761,392	2,804,400,000	64.1	831,400,000	19.0	933,200,000	21.3	189,100,000	4.3	104,819,000	2.4	89,493,000	2.0

Note.—Of the total yearly number of Letters, Post-cards, Halfpenny Packets, Newspapers, Parcels, and Telegrams, the percentage of each is as follows:—

Letters	-	56.6	Halfpenny Packets	-	-	18.9	Parcels	-	-	2.1
Post-cards	-	16.8	Newspapers	-	-	3.8	Telegrams	-	-	1.8

APPENDIX A.—continued.

Letters Delivered.

STATEMENT showing the ESTIMATED NUMBER of Letters delivered in the UNITED KINGDOM in each of the last TEN YEARS.

Year.	England and Wales.					Scotland.	Ireland.	Increase per cent.	Average number to each person.	United Kingdom.	Increase per cent.	Average number to each person.
	Country Offices.	Increase per cent.	London District.	Increase per cent.	Total.	Increase per cent.						
1897-98	1,120,300,000	6·8	580,900,000	6·0	1,711,200,000	6·5	177,400,000	5·3	42	123,700,000	4·8	27
1898-99	1,242,000,000	10·8	617,700,000	4·5	1,859,700,000	8·7	190,600,000	7·4	45	136,500,000	10·3	30
1899-1900	1,276,300,000	2·7	632,600,000	2·4	1,908,900,000	2·6	186,900,000	3·3	46	141,100,000	3·4	31
1900-01	1,312,700,000	2·9	664,300,000	5·0	1,977,000,000	3·6	202,400,000	2·8	47	144,900,000	2·2	32
1901-02	1,392,700,000	6·1	692,100,000	4·2	2,084,800,000	5·5	216,100,000	7·8	49	145,600,000	3·1	33
1902-03	1,465,800,000	5·2	742,000,000	7·2	2,207,800,000	5·9	221,900,000	1·7	49	149,900,000	·8	34
1903-04	1,487,700,000	1·5	750,800,000	dec.	2,238,500,000	·5	226,200,000	1·9	49	153,100,000	2·2	35
1904-05	1,511,800,000	1·6	727,200,000	·5	2,239,000,000	·9	229,700,000	1·5	50	155,900,000	1·8	35
1905-06	1,533,900,000	3·2	753,400,000	inc.	2,287,300,000	3·3	233,100,000	3·7	51	155,800,000	dec.	36
1906-07	1,580,700,000	4·5	767,000,000	1·8	2,347,700,000	3·6	248,400,000	4·3	53	158,300,000	inc.	36

APPENDIX A.—continued.

Post-cards Delivered.

STATEMENT showing the ESTIMATED NUMBER of POST-CARDS delivered in the UNITED KINGDOM in each of the last TEN YEARS.

Year.	England and Wales.						Scotland.	In-crease per cent.	Average Number to each Person.	Ireland.	In-crease per cent.	Average Number to each Person.	United Kingdom.	In-crease per cent.	Average Number to each Person.
	Country Offices.	In-crease per cent.	London District.	In-crease per cent.	Total.	In-crease per cent.									
1897-98	206,600,000	7·3	102,300,000	8·5	308,900,000	7·7	36,400,000	5·8	8·6	15,100,000	dec. 7·7	3·3	360,400,000	7·1	9·0
1898-99	223,100,000	8·0	104,100,000	1·8	327,200,000	5·9	38,800,000	6·6	·1	16,300,000	inc. 7·3	3·6	382,200,000	6·0	9·5
1899-1900	233,700,000	4·8	108,900,000	4·6	342,600,000	4·7	40,800,000	5·2	9·5	16,900,000	4·3	3·7	400,300,000	4·7	9·8
1900-01	244,600,000	4·7	114,800,000	5·4	359,400,000	4·9	41,600,000	2·0	9·6	18,000,000	6·5	4·0	419,000,000	4·7	10·2
1901-02	260,900,000	6·7	119,400,000	4·0	380,300,000	5·8	44,700,000	9·9	10·2	18,900,000	5·0	4·3	444,900,000	6·2	10·7
1902-03	286,200,000	9·7	123,700,000	8·6	415,900,000	9·4	53,500,000	17·1	11·8	19,500,000	3·2	4·4	468,900,000	9·9	11·6
1903-04	360,200,000	20·9	147,900,000	14·0	517,100,000	24·3	72,200,000	34·3	15·8	24,400,000	25·1	5·5	613,700,000	21·5	14·5
1904-05	450,500,000	22·0	166,600,000	12·6	617,100,000	19·3	86,700,000	20·1	18·7	30,700,000	25·8	7·0	734,500,000	19·7	17·1
1905-06	498,500,000	9·5	183,000,000	9·8	673,500,000	9·6	91,000,000	5·0	19·5	32,800,000	6·8	7·5	800,300,000	9·0	18·5
1906-07	517,100,000	4·8	188,100,000	2·8	705,200,000	4·2	91,500,000	·5	19·4	34,700,000	5·8	7·9	831,400,000	3·9	19·0

APPENDIX A.—continued

Halfpenny Packets Delivered.

STATEMENT showing the ESTIMATED NUMBER of HALFPENNY PACKETS* delivered in the UNITED KINGDOM in each of the last TEN YEARS.

Year.	England and Wales.				Average Number to each Person.	Scotland.	In-crease per cent.	Average Number to each Person.	Ireland.	In-crease per cent.	Average Number to each Person.	United Kingdom.	In-crease per cent.	Average Number to each Person.
	Country Offices.	In-crease per cent.	London District.	In-crease per cent.										
1897-98	463,700,000	5·5 dec.	149,200,000	3·9 dec.	19·7	76,900,000	2·0 dec.	18·2	37,500,000	4·3 dec.	8·2	727,300,000	4·2 dec.	18·3
1898-99	446,600,000	3·0 inc.	141,300,000	5·3 inc.	18·8	75,100,000	2·3 dec.	17·7	35,600,000	5·3 inc.	7·8	701,500,000	3·5 inc.	17·4
1899-1900	451,900,000	·4 inc.	143,700,000	1·7 inc.	18·7	75,000,000	·1 inc.	17·5	33,500,000	8·5 inc.	7·2	703,800,000	·2 inc.	17·3
1900-01	463,600,000	3·3 inc.	152,700,000	6·3 inc.	19·2	77,800,000	3·7 inc.	18·0	35,300,000	8·6 inc.	7·8	732,400,000	4·2 inc.	17·9
1901-02	499,800,000	7·1 inc.	153,300,000	·4 inc.	20·0	78,000,000	2·3 dec.	16·9	37,100,000	5·1 inc.	8·4	766,900,000	4·6 inc.	18·4
1902-03	526,900,000	5·4 inc.	157,900,000	3·0 inc.	20·7	86,900,000	14·3 inc.	19·2	38,100,000	2·7 inc.	8·6	806,800,000	5·7 inc.	19·3
1903-04	533,900,000	1·3 inc.	169,500,000	1·0 inc.	20·7	86,500,000	5 dec.	18·9	40,600,000	6·6 inc.	9·2	820,400,000	1·3 inc.	19·3
1904-05	547,500,000	2·6 inc.	163,200,000	2·3 inc.	21·0	91,000,000	5·2 inc.	19·7	42,000,000	3·4 dec.	9·5	843,700,000	2·8 inc.	19·7
1905-06	535,000,000	6·8 inc.	169,000,000	3·6 inc.	22·0	98,400,000	5·9 inc.	20·6	41,900,000	1·9 inc.	9·4	891,600,000	5·7 inc.	20·6
1906-07	611,900,000	4·6 inc.	178,200,000	5·4 inc.	22·8	101,500,000	5·3 inc.	21·5	41,800,000	1·0 inc.	9·5	933,200,000	4·7 inc.	21·3

* Including also foreign Printed Papers, &c., over 2 oz. in weight, prepaid at the halfpenny rate.

APPENDIX A.—*continued.***Newspapers Delivered.**

STATEMENT showing the ESTIMATED NUMBER of NEWSPAPERS delivered in the UNITED KINGDOM in each of the last TEN YEARS.

Year.	England and Wales.					Scotland.	Ireland.	In-crease per cent.	Average Number to each Person.	United Kingdom.	In-crease per cent.	Average Number to each Person.
	Country Offices.	In-crease per cent.	London District.	In-crease per cent.	Total.	In-crease per cent.						
1887-88	85,000,000	2·0	31,800,000	dec. 4·2	116,800,000	dec. 0·6	16,900,000	0·6	4·1	150,900,000	·2	3·8
1888-89	87,300,000	2·7	30,700,000	3·5	118,000,000	inc. 4·1	18,200,000	7·7	4·2	154,100,000	2·1	3·8
1889-1890	94,200,000	7·9	30,800,000	inc. 0·3	125,000,000	7·8	19,100,000	4·9	4·5	163,400,000	6·0	4·0
1900-01	95,400,000	1·3	32,400,000	5·2	127,800,000	—	20,700,000	8·4	4·5	167,800,000	2·7	4·1
1901-02	96,800,000	1·6	33,800,000	4·3	130,700,000	4·1	19,000,000	dec. 8·2	4·5	169,800,000	1·2	4·1
1902-03	100,000,000	3·2	35,000,000	3·6	135,000,000	4·0	19,500,000	inc. 2·6	4·6	175,400,000	3·3	4·2
1903-04	99,200,000	dec. 1	33,700,000	dec. 3·7	133,600,000	0·9	20,100,000	3·1	4·6	174,800,000	dec. 0·3	4·1
1904-05	103,500,000	inc. 3·6	33,700,000	—	137,200,000	3·3	20,400,000	1·5	4·7	179,400,000	inc. 2·6	4·2
1905-06	106,000,000	2·4	37,100,000	inc. 10·1	143,100,000	4·1	19,600,000	dec. 3·9	4·9	183,400,000	3·3	4·3
1906-07	110,200,000	4·0	35,700,000	dec. 3·8	145,900,000	2·6	19,900,000	inc. 1·5	4·9	186,100,000	2·0	4·3

APPENDIX A.—continued.

Parcel Post.

STATEMENT showing the NUMBER of PARCELS and the REVENUE derived from the PARCEL POST in each of the last TEN YEARS.

Year.	NUMBER OF PARCELS DELIVERED.*										REVENUE.						
	ENGLAND AND WALES.					SCOTLAND.		IRELAND.		UNITED KINGDOM.			Postage.		Average Postage per Parcel.		
	Country Offices.		London District.		Total.	In-crease per cent.	In-crease per cent.	In-crease per cent.	Number.	In-crease per cent.	Pro-portion wholly Road-borne.	Gross Amount.	55 per cent. on Railway-Parcels paid to Companies.	Post Office Share.			
	Number.	In-crease per cent.	Number.	In-crease per cent.	Number.											In-crease per cent.	Number.
1897-98	44,277,000	6·7	11,890,000	5·9	56,167,000	6·5	7,232,000	6·3	4,424,000	6·0	67,823,000	6·4	13·83	£ 1,425,283		£ 673,406	£ 751,887
1898-99	46,897,000	5·9	12,615,000	6·1	59,512,000	5·9	7,760,000	7·3	4,641,000	4·9	71,913,000	6·0	14·09	1,468,099	705,732	792,367	4·99
1899-1900	49,046,000	4·6	13,444,000	6·6	62,490,000	5·0	8,068,000	4·4	4,860,000	4·7	75,443,000	4·9	14·36	1,580,508	742,215	838,293	5·03
1900-01	52,523,000	7·1	14,671,000	9·1	67,194,000	7·5	8,608,000	6·3	5,215,000	7·3	81,017,000	7·4	14·08	1,699,994	801,236	898,758	5·04
1901-02	56,081,000	6·8	15,742,000	7·3	71,823,000	6·9	9,227,000	7·2	5,655,000	6·5	86,602,000	6·9	13·96	1,821,976	859,603	962,373	5·05
1902-03	58,566,000	4·4	16,339,000	3·8	74,905,000	4·3	9,634,000	4·4	5,771,000	3·9	90,310,000	4·3	14·11	1,902,048	895,969	1,006,079	5·06
1903-04	61,356,000	4·8	16,863,000	3·2	78,219,000	4·4	10,105,000	4·9	6,102,000	5·7	94,426,000	4·6	14·18	1,994,454	938,172	1,056,282	5·07
1904-05	63,184,000	3·0	17,891,000	3·1	80,575,000	3·0	10,381,000	2·7	6,275,000	2·8	97,231,000	3·0	14·46	2,060,150	961,420	1,098,730	5·06
1905-06	66,277,000	4·9	18,167,000	4·5	84,444,000	4·8	10,725,000	3·3	6,513,000	3·8	101,682,000	4·6	15·00	2,138,673	996,449	1,142,224	5·05
1906-07	68,542,000	3·4	18,417,000	1·4	86,959,000	3·0	11,102,000	3·5	6,753,000	3·8	104,819,000	3·1	15·19	2,131,223	991,371	1,139,853	4·98

* Including parcels despatched to places abroad.

APPENDIX A.—continued.

Registered Letters.

STATEMENT showing the NUMBER OF LETTERS REGISTERED by the Public in the UNITED KINGDOM in each of the last TEN YEARS.

YEAR.	ENGLAND AND WALES.						SCOTLAND.		IRELAND.		UNITED KINGDOM.			
	Country Offices.		London District.		Total.									
	Number.	Increase per cent.	Number.	Increase per cent.	Number.	Increase per cent.	Number.	Increase per cent.	Number.	Increase per cent.	Number.	Increase per cent.		
1897-98	-	-	7,316,040	5.7	4,789,037	6.4	12,105,107	6.0	1,273,541	5.5	834,831	2.7	14,213,479	5.8
1898-99	-	-	7,817,958	6.9	5,174,092	8.0	12,992,050	7.3	1,368,733	7.5	879,887	5.4	15,240,689	7.2
1899-1900	-	-	8,359,899	6.9	5,555,544	7.4	13,915,443	7.1	1,438,530	5.1	902,879	2.6	16,256,862	6.7
1900-01	-	-	9,042,411	8.2	5,921,288	6.6	14,963,699	7.5	1,731,775	23.9	984,395	9.0	17,729,869	9.1
1901-02	-	-	9,553,006	5.6	6,190,963	4.6	15,743,969	5.2	2,027,342	13.8	1,023,982	4.5	18,800,313	6.0
1902-03	-	-	9,936,038	2.9	6,447,780	4.1	16,273,818	3.4	1,696,098	dec. 16.3	1,046,240	1.7	19,016,156	1.1
1903-04	-	-	9,745,095	dec. 8	6,505,334	8	16,247,429	dec. 2	1,718,335	inc. 1.4	1,063,460	1.6	19,029,114	1
1904-05	-	-	9,292,569	4.6	6,473,637	dec. 5	15,766,206	3.0	1,690,596	dec. 2.2	1,038,868	dec. 4	18,504,680	dec. 2.8
1905-06	-	-	9,203,963	1.0	6,703,901	inc. 3.6	15,906,864	inc. 9	1,678,602	1	1,048,867	9	18,654,333	inc. 7
1906-07	-	-	9,122,053	9	6,673,902	dec. 4	15,800,955	dec. 7	1,642,235	2.2	1,046,550	0.3	18,491,770	dec. 8

APPENDIX A.—*continued.*

Registered Parcels.
STATEMENT showing the NUMBER OF PARCELS REGISTERED by the PUBLIC in the UNITED KINGDOM in each of
the last TEN YEARS.

YEAR.	ENGLAND AND WALES.						SCOTLAND.		IRELAND.		UNITED KINGDOM.	
	Country Offices.		London District.		Total.		Number.	Increase per cent.	Number.	Increase per cent.	Number.	Increase per cent.
	Number.	Increase per cent.	Number.	Increase per cent.	Number.	Increase per cent.						
1897-98	-	dec. 4·7	417,086	215,978	dec. 16·4	633,064	48,347	dec. 3·5	38,080	dec. 2·5	719,471	dec. 8·3
1898-99	-	inc. 10·2	459,555	212,963	1·4	672,513	49,524	inc. 2·4	39,764	inc. 4·5	761,301	inc. 5·9
1899-1900	-	13·8	523,077	218,051	inc. 2·4	741,128	53,547	10·2	43,483	9·2	838,113	10·0
1900-01	-	·9	574,723	238,475	9·4	813,203	77,313	9·7	46·5	13·6	940,025	12·2
1901-02	-	12·2	644,634	265,302	11·2	909,936	112,473	11·9	44·4	16·8	1,079,541	14·8
1902-03	-	dec. ·1	643,743	234,414	7·2	928,156	73,972	dec. 34·2	dec.	10·7	1,063,372	dec. 1·3
1903-04	-	5·1	610,922	286,308	4·2	907,230	71,779	3·0	64,918	2·6	1,043,927	2·0
1904-05	-	inc. ·9	616,241	291,315	dec. 1·7	907,466	70,422	1·9	63,643	dec. 2·0	1,041,521	·2
1905-06	-	dec. ·5	613,289	300,431	inc. 3·2	913,770	69,868	1·2	64,319	inc. 1·1	1,047,675	inc. ·6
1906-07	-	7·4	567,803	303,975	2·2	874,778	69,747	inc. ·2	63,323	1·6	1,009,548	dec. 3·6

APPENDIX A.—continued.

Registered Letters and Parcels.

STATEMENT showing the NUMBERS REGISTERED by the PUBLIC in the UNITED KINGDOM in each of the last TEN YEARS
(a) at the ordinary fee of 2d., (b) at higher fees.

Year.	Letters.			Parcels.		
	Registered at		Total.	Registered at		Total.
	2d.	Fees above 2d.		2d.	Fees above 2d.	
1897-98 -	14,105,415	108,064	14,213,479	689,109	30,362	719,471
1898-99 -	15,118,316	122,353	15,240,669	731,489	30,312	761,801
1899-1900 -	16,127,030	129,822	16,256,852	805,708	32,405	838,113
1900-01 -	17,591,110	138,759	17,729,869	904,862	35,163	940,025
1901-02 -	18,659,927	140,386	18,800,313	1,042,739	36,802	1,079,541
1902-03 -	18,882,275	133,881	19,016,156	1,026,534	38,838	1,065,372
1903-04 -	18,905,333	123,776	19,029,114	1,003,822	40,105	1,043,927
1904-05 -	18,386,920	117,770	18,504,690	1,003,960	37,561	1,041,521
1905-06 -	18,517,667	116,666	18,634,333	1,008,287	39,388	1,047,675
1906-07 -	18,374,117	117,653	18,491,770	964,740	45,108	1,009,848

APPENDIX A.—*continued.***Express Delivery Service.**

STATEMENT showing the NUMBER of EXPRESS DELIVERY SERVICES performed in the UNITED KINGDOM in each of the last
TEN YEARS.

YEAR.	ENGLAND AND WALES.						SCOTLAND.		IRELAND.		UNITED KINGDOM.	
	Country Offices.			London District.			Total.		Number.	Increase per cent.	Number.	Increase per cent.
	Number.	Increase per cent.		Number.	Increase per cent.		Number.	Increase per cent.				
1887-88	150,062	32·6		362,580	23·1		512,642	25·8	8,222	21·7	551,379	25·8
1888-89	181,918	21·2		416,119	14·8		598,037	16·7	8,772	dec. 1·7	641,227	16·3
1889-1900	199,539	9·9		474,351	14·0		674,190	12·7	8,847	inc. ·9	730,381	19·3
1900-01	223,903	12·0		530,661	11·9		754,569	11·9	8,969	1·4	804,447	11·7
1901-02	253,218	15·6		627,826	18·3		886,744	17·5	9,285	10·7	941,906	17·1
1902-03	299,547	15·6		745,253	18·7		1,044,599	17·8	12,179	22·7	1,107,106	17·5
1903-04	364,782	21·9		855,012	14·7		1,219,794	16·8	13,867	13·9	1,290,833	16·6
1904-05	409,260	12·2		916,744	7·2		1,296,104	8·7	15,124	9·1	1,403,053	8·7
1905-06	490,251	17·3		1,010,815	10·3		1,491,068	12·4	16,299	7·8	1,578,746	12·5
1906-07	530,383	10·4		1,048,440	3·7		1,578,728	5·9	17,761	9·0	1,673,288	6·0

APPENDIX B.

Foreign and

**ESTIMATE of the WEIGHT of LETTERS and POST-CARDS, and
FOREIGN COUNTRIES and BRITISH**

COUNTRY OR COLONY.	Despatched from the United Kingdom.		Destined for the United Kingdom.	
	Letters and Post-cards.	Circulars, Book Packets, Patterns, News- papers.	Letters and Post-cards.	Circulars, Book Packets, Patterns, News- papers.
EUROPE.	Lb.	Lb.	Lb.	Lb.
Austria-Hungary	57,000	443,000	52,000	140,000
Belgium and Luxemburg	94,000	344,000	92,000	190,000
Denmark, Norway, and Sweden	82,000	338,000	73,000	145,000
France	340,000	1,488,000	398,000	1,089,000
Germany	339,000	1,898,000	380,000	1,183,000
Gibraltar, Malta, and Cyprus	44,000	387,000	64,000	50,000
Holland	146,000	342,000	94,000	482,000
Italy	74,000	719,000	76,000	195,000
Russia	48,000	386,000	38,000	106,000
Spain and Portugal	56,000	619,000	48,000	76,000
Switzerland	61,000	465,000	61,000	133,000
Turkey, Greece, Roumania, and Balkan States	27,000	341,000	33,000	70,000
Totals	1,368,000	7,770,000	1,400,000	3,850,000
ASIA.				
Asiatic Turkey and Persia	9,000	115,000	3,000	10,000
India (including Aden)	244,000	2,931,000	165,000	433,000
Ceylon, Straits Settlements, and East Indies	59,000	793,000	42,000	86,000
China, Japan, &c.	58,000	829,000	52,000	93,000
Totals	370,000	4,668,000	262,000	622,000

APPENDIX B.

Colonial Letters, &c.

of OTHER ARTICLES, exchanged by the UNITED KINGDOM with
COLONIES, during the Year 1906.

COUNTRY OR COLONY.	Despatched from the United Kingdom.		Destined for the United Kingdom.	
	Letters and Post-cards.	Circulars, Book Packets, Patterns, News- papers.	Letters and Post-cards.	Circulars, Book Packets, Patterns, News- papers.
AFRICA.	Lb.	Lb.	Lb.	Lb.
South African Colonies - - -	283,000	2,486,000	224,000	577,000
East Coast of Africa, Mauritius, &c. - - -	15,000	185,000	10,000	12,000
West Coast of Africa, Madeira, &c. - - -	34,000	413,000	29,000	17,000
Egypt, Morocco, &c. - - -	55,000	483,000	40,000	70,000
Totals - - -	387,000	3,567,000	303,000	676,000
AMERICA.				
United States - - - -	429,000	2,979,000	480,000	2,502,000
Canada and Newfoundland - - -	291,000	2,309,000	240,000	790,000
West Indies (British and Foreign), &c. - -	40,000	453,000	24,000	47,000
Mexico and Central American States - -	14,000	168,000	10,000	15,000
Brazil, Argentine Republic, Uruguay, and } Paraguay - - - - - }	46,000	663,000	39,000	92,000
Chili, Peru, and Bolivia - - - -	18,000	223,000	15,000	27,000
Ecuador, Colombia, Venezuela, &c. - -	7,000	84,000	4,000	3,000
Totals - - -	845,000	6,879,000	812,000	3,476,000
AUSTRALASIA.				
Commonwealth of Australia - - -	132,000	1,639,000	87,000	554,000
New Zealand, Fiji, &c. - - - -	64,000	801,000	42,000	375,000
Totals - - -	196,000	2,440,000	129,000	929,000
GRAND TOTALS - - -	3,166,000	25,324,000	2,915,000	9,562,000

A P P E N D I X B.—*continued.*

Foreign and Colonial Parcels.

STATEMENT of the NUMBER of FOREIGN and COLONIAL PARCELS DESPATCHED and RECEIVED in each of the last TEN YEARS.

YEAR.	FOREIGN COUNTRIES.											
	BELGIUM.		FRANCE.		GERMANY.		HOLLAND.		ITALY.		SWITZERLAND.	
	Despatched to.	Received from.	Despatched to.	Received from.	Despatched to.	Received from.	Despatched to.	Received from.	Despatched to.	Received from.	Despatched to.	Received from.
1897-8	50,239	24,182	206,189	185,125	246,430	312,326	45,981	36,319	61,415	44,583	46,483	17,861
1898-9	52,815	25,729	209,075	202,847	264,039	346,245	48,693	40,431	62,512	56,728	49,578	20,224
1899-1900	52,911	25,764	208,153	199,601	266,982	384,169	47,204	42,262	65,198	61,980	51,712	21,961
1900-1	54,038	28,178	222,477	212,032	281,145	392,426	48,804	40,952	73,179	66,410	52,248	22,292
1901-2	55,542	31,334	225,586	232,067	304,971	447,601	51,470	43,897	80,028	74,523	56,362	22,407
1902-3	56,655	33,272	237,215	234,356	330,587	467,819	53,018	46,130	88,855	74,716	58,278	22,793
1903-4	59,769	36,692	251,872	242,351	337,889	470,026	57,668	50,348	103,367	75,347	65,098	25,404
1904-5	60,608	37,101	261,307	247,044	332,608	459,471	62,669	51,618	121,823	74,064	70,052	20,064
1905-6	63,745	38,351	275,074	254,490	356,423	474,569	68,958	56,865	133,361	76,384	74,627	6,444
1906-7	66,817	39,244	285,389	252,234	377,623	477,082	72,898	60,291	141,273	74,067	74,626	4,950

APPENDIX B.—*continued.***Foreign and Colonial Parcels—*continued.***

STATEMENT of the NUMBER of FOREIGN and COLONIAL PARCELS DESPATCHED and RECEIVED in each of the last
TEN YEARS—*continued.*

YEAR.	BRITISH COLONIES AND POSSESSIONS.											
	AUSTRALIA AND NEW ZEALAND.		CANADA.		CEYLON, STRAITS SETTLEMENTS, AND HONG KONG.		INDIA.		SOUTH AFRICA.		WEST AFRICA.	
	Despatched to.	Received from.	Despatched to.	Received from.	Despatched to.	Received from.	Despatched to.	Received from.	Despatched to.	Received from.	Despatched to.	Received from.
1897-8	70,687	24,641	51,185	21,465	31,875	20,793	98,869	69,261	117,326	27,654	8,146	2,788
1898-9	76,666	26,500	59,276	23,175	36,987	24,528	105,149	71,268	128,377	30,637	10,033	3,180
1899-1900	82,706	28,658	62,115	26,022	44,507	25,326	111,017	73,529	*273,401	*37,402	14,226	6,171
1900-1	91,753	28,569	66,105	29,282	48,897	28,282	116,702	70,409	*677,480	*113,990	18,000	6,556
1901-2	96,652	31,739	75,321	34,860	53,934	34,575	123,616	74,505	*775,616	*90,117	26,580	4,243
1902-3	102,012	31,735	84,772	39,183	55,255	36,832	149,990	84,566	*527,575	*69,699	38,400	5,753
1903-4	113,469	34,367	120,672	51,354	64,546	42,167	171,410	90,612	486,459	67,535	47,612	6,455
1904-5	121,066	35,362	143,444	63,462	69,743	41,148	192,368	107,253	405,279	66,688	55,539	7,154
1905-6	127,041	36,488	172,609	76,492	73,179	41,450	215,744	117,616	399,725	64,569	59,545	7,824
1906-7	143,523	38,296	209,690	95,716	80,831	40,207	231,919	120,956	330,841	60,603	70,835	9,829

* Including parcels for and from the Army in South Africa.

APPENDIX B.—*continued.***Foreign and Colonial Parcels—*continued.***STATEMENT of the NUMBER of FOREIGN and COLONIAL PARCELS DESPATCHED and RECEIVED in each of the last
TEN YEARS—*continued.*

YEAR.	BRITISH COLONIES AND POSSESSIONS— <i>continued.</i>										GRAND TOTAL. (FOREIGN AND COLONIAL.)			
	WEST INDIES.					OTHER COLONIES AND POSTAL AGENCIES.					TOTAL.			
	Despatched to.	Received from.	Despatched to.	Received from.	Increase per cent.	Despatched.	Received.	Increase per cent.	Despatched.	Increase per cent.	Despatched.	Received.	Increase per cent.	Increase per cent.
1897-8	29,747	7,761	55,127	28,246	12.73	460,962	197,609	5.48	1,226,964	10.41	848,393		10.52	
1898-9	29,903	8,270	59,011	24,440	9.63	505,352	211,998	7.28	1,304,678	6.33	939,187		10.70	
1899-1900	33,988	9,233	66,547	23,107	36.24	688,507	229,448	8.23	1,508,795	15.65	1,001,820		6.67	
1900-1	37,531	9,704	75,650	27,645	64.43	1,132,118	314,437	37.04 Dec.	2,005,406	32.92	1,118,788		11.68	
1901-2	40,896	10,235	90,525	33,444	13.33 Dec.	1,283,040	313,718	0.23 Inc.	2,202,845	9.84 Dec.	1,211,391		8.28	
1902-3	44,336	11,342	94,899	35,250	14.46 Inc.	1,097,239	314,360	0.20 Inc.	2,109,755	4.23 Inc.	1,244,850		2.76	
1903-4	51,542	11,819	102,748	34,220	1.02	1,108,458	338,529	7.69	2,213,819	4.93	1,295,484		4.07	
1904-5	51,730	11,531	110,554	36,383	3.72	1,149,728	368,981	9.00	2,315,204	4.58	1,315,788		1.57	
1905-6	48,433	10,674	115,217	37,725	4.76	1,204,493	392,338	6.47	2,474,003	6.86	1,431,035		8.76	
1906-7	48,094	9,706	108,161	32,685	1.61	1,223,894	407,798	3.81	2,575,891	4.12	1,471,785		2.85	

APPENDIX C.

Home Packet Service.

Line of Communication.	Frequency.	Contractors.	Terminable.	Payment.	Remarks.
ENGLAND AND WALES.					
ALDERNEY and GUERNSEY Service.	—	Alderney Steam Packet Co., Ltd.	- - -	1,000 <i>l</i> . (estimated).	Contract under consideration.
FLEETWOOD and BELFAST.	Week days	North Lancashire Steam Navigation Company (but payment made through Lancashire and Yorkshire Railway Company).	On 6 months' notice.	1,000 <i>l</i> .	The Department has the general use of the Company's vessels.
HOLYHEAD and KINGSTOWN.	Twice a day.	City of Dublin Steam Packet Company.	31 Mar. 1917 or on 12 months' notice after 31 Mar. 1916.	100,000 <i>l</i> .* to 31 Mar. 1917; 80,000 <i>l</i> . after that date.	Time on outward journeys (including transfer on both sides of the Channel), 3 hrs. 37 mins. night service and 3 hrs. 22 mins. day service. Time on inward journeys (including transfer), 3 hrs. 32 mins. night service and 3 hrs. 17 mins. day service.
HOLYHEAD and NORTH WALL.	Saturdays	London and North Western Railway Company.	—	4,600 <i>l</i> .	This service is in connection with the acceleration of outward American Mails, and the sum of 1,553 <i>l</i> . is contributed by the Cunard Steamship Co. towards the cost of the Packet Service.
Ditto - -	Week Days.	Ditto	—	700 <i>l</i> .	This service is in connection with the Supplementary Irish Night Mails conveyed by the 10.15 p.m. train from Euston.
LIVERPOOL and DOUGLAS (ISLE of MAN).	Once on week days (twice on week days during the summer season).	Isle of Man Steam Packet Company.	On 1st Oct. of any year by 6 months' notice on either side.	4,500 <i>l</i> .	Speed of 14 nautical miles an hour in summer; 12 in winter.
Ditto	—	Ditto	- - -	3 <i>s</i> . per cwt. Est. 850 <i>l</i> . p.a. 500 <i>l</i> . and 1 <i>s</i> . 6 <i>d</i> . per basket for parcels.	Conveyance of Parcel Mails. —
PENZANCE and SCILLY	Three times a week in summer. Twice a week in winter.	West Cornwall Steamship Company.	On 6 months' notice.	—	—
PORTSMOUTH and RYDE.	Once daily, with the Night Mails.	London, Brighton, and South Coast, and London and South Western Railway Companies.	On 6 months' notice.	1,400 <i>l</i> .	The Department has the general use of the Companies' vessels, which are constantly plying between the two places.
SOUTHAMPTON and CHANNEL ISLANDS.	Once on week days.	London and South Western Railway Company.	On 6 months' notice.	6,500 <i>l</i> .	No contract.
SOUTHAMPTON and COWES.	Once on week days.	Southampton, Isle of Wight, and South of England Royal Mail Steam Packet Company.	- - -	150 <i>l</i> .	No contract. The Department has the general use of the Company's vessels.
WYMOUTH and CHANNEL ISLANDS.	Six days a week.	Great Western Railway Company.	- - -	200 <i>l</i> .	No contract. The Department has the general use of the Company's vessels.

* Subject to a reduction of 2,000*l*. in respect of the receipts from passenger traffic.

APPENDIX C.—continued.

Home Packet Service—continued.

Line of Communication.	Frequency.	Contractors.	Terminable.	Payment.	Remarks.
SCOTLAND.					
ABERDEEN and LERWICK.	Five days a week in summer. Three days a week in winter.	North of Scotland and Orkney and Shetland Steam Navigation Company.	On 6 months' notice.	6,000 <i>l.</i> 100 <i>l.</i> for parcels and 40 <i>l.</i> for North Isle Service.	—
LERWICK, WHALSAY, and NORTH ISLES.	Thrice a week.	Do.			
ARDROSSAN and ARBAN.	Week days	Glasgow and South-Western Railway Company.	On 6 months' notice.	425 <i>l.</i>	—
GLASGOW and CAMBELTOWN.	Week days	Campbeltown and Glasgow Steam Packet Joint Stock Company, Ltd.	On 3 months' notice.	1,575 <i>l.</i>	The Department has the general use of these steamers.
GREENOCK, ARDROSSAN, and BELFAST.	Week days	G. and J. Burns, Ltd.	On 12 months' notice.	10,000 <i>l.</i>	—
GREENOCK, COLONSAY, and TARBERT (HARRIS).	Once a week	Martin Orme and John McCallum & Co.	- - -	500 <i>l.</i>	No contract.
GREENOCK and DUNVEGAN.					
GREENOCK and KILMUN.	Twice on week days.	Capt. Jas. Williamson, for Caledonian Steam Packet Company, Ltd.	- - -	125 <i>l.</i>	No contract.
GREENOCK and LOCHGOILHEAD.	Week days	Lochgoil Steam Packet Company, per M. T. Clark.	On 6 months' notice.	350 <i>l.</i>	The Department has the general use of all this Company's steamers.
GREENOCK (PRINCE'S PIER) and ROTHESAY.	Week days	Glasgow and South-Western Railway Co.	On 6 months' notice.	130 <i>l.</i>	—
GREENOCK and ROTHESAY.	Week days	David MacBrayne, Ltd.	On 6 months' notice.	2,510 <i>l.</i>	This payment includes 320 <i>l.</i> for the general use of all the Company's steamers running to and from the Clyde.
GREENOCK and ARDEISHAIG.					
GREENOCK, ISLAY, and JURA.	Week days	David MacBrayne, Ltd.	On 6 months' notice.	900 <i>l.</i>	—
TARBERT, ISLAY, and JURA.					
INVERGORDON and CROMARTY.	Week days	Cromarty Steamship Company, Ltd.	On 3 months' notice.	120 <i>l.</i>	No contract.
INVERNESS and FORT AUGUSTUS.	Six days a week.	David MacBrayne, Ltd.	On 6 months' notice.	210 <i>l.</i> and 25 <i>l.</i> for Parcel Service.	—
KIRKWALL and BALFOUR.	Five days a week.	John Reid	On 3 months' notice.	58 <i>l.</i>	Speed of not less than 8 nautical miles an hour.

APPENDIX C.—*continued.*Home Packet Service—*continued.*

Line of Communication.	Frequency.	Contractors.	Terminable.	Payment.	Remarks.
SCOTLAND—cont.					
KIRK WALL and NORTH ISLES of ORKNEY.	Twice a week for 9 months, and three times a week for 3 months.	Orkney Steam Navigation Company, per Donald Bertram.	On 6 months' notice.	500 <i>l.</i>	—
KNOYDART and MALLAIG.	Three days a week.	Arthur Salvin Bowlby, payable to Alexander McLennan.	On 6 months' notice.	52 <i>l.</i> 2 <i>s.</i> 10 <i>d.</i>	By sailing vessel.
KYLE and PORTREE.	Six days a week.	David MacBrayne, Ltd.	On 12 months' notice.	650 <i>l.</i>	Speed of not less than 10 nautical miles an hour.
KYL and STORNOWAY	Once a day, six days a week each way.	David MacBrayne, Ltd.	On 6 months' notice.	3,000 <i>l.</i>	Speed of 11 nautical miles an hour.
OBAN and FORT WILLIAM.	Once a day, six days a week.	"	- - -	500 <i>l.</i>	Time on outward or homeward journey 3½ hours.
OBAN and TOBERMORY.	Once a day, six days a week.	"	On 6 months' notice.	555 <i>l.</i>	Speed of 10 nautical miles an hour.
OBAN and West of MULL, calling at Croggan, Tobermory, Kilchoan, Coll, Tiree, Iona (on outward voyage) and Bunessan.	<i>Out.</i> — On Mondays, Wednesdays, and Fridays. <i>In.</i> — On Tuesdays, Thursdays, and Saturdays.	"	On 6 months' notice.	1,200 <i>l.</i>	—
OBAN and DUNVEGAN, calling at Tobermory, Castlebay, Lochboisdale, and Lochmaddy.	Mondays, Wednesdays, and Fridays.	}	On 6 months' notice.	3,000 <i>l.</i>	Speed of not less than 11 nautical miles an hour.
DUNVEGAN and OBAN, calling at Loch Pooltiel, and Loch Bracadale and Tobermory; And also at Canna and Rùm.	Tuesdays, Thursdays, and Saturdays. Tuesdays and Thursdays.				
OBAN and LOCHMADDY, calling at Tobermory, Loch Bracadale, Loch Pooltiel, and Dunvegan; And also at Rùm and Canna.	Tuesdays, Thursdays, and Saturdays. Tuesdays and Saturdays.	}	On 6 months' notice.	3,000 <i>l.</i>	"
LOCHMADDY and OBAN, calling at Lochboisdale and Castlebay.	Mondays, Wednesdays, and Fridays.				
PORTREE, HARRIS, LOCHMADDY, and DUNVEGAN.	<i>Out.</i> — Tuesdays, Thursdays, and Saturdays. <i>In.</i> — Mondays, Wednesdays, and Fridays.	"	On 6 months' notice.	1,550 <i>l.</i>	Speed of not less than 10 nautical miles an hour.

APPENDIX C.—*continued.*Home Packet Service—*continued*

Line of Communication.	Frequency.	Contractors.	Terminable.	Payment.	Remarks.
SCOTLAND—cont.					
ROTHESAY and WEMYSS BAY	Week days	Caledonian Steam Packet Company, Ltd., per Capt. James Williamson.	On 6 months' notice.	150 <i>l.</i>	—
SCRABSTER (THURSO) and STROMNESS.	6 days a week	North of Scotland and Orkney and Shetland Steam Navigation Company.	On 6 months' notice.	2,000 <i>l.</i>	Vessels to be capable of steaming 12 knots an hour.
SHETLAND (VIRKIE) and FAIR ISLE.	Once a fortnight.	Isabister and Co.	—	60 <i>l.</i> , 1 Apr. to 31 Oct.; 10 <i>l.</i> a trip other months.	By sailing vessel.
SHETLAND (WALLS) and FOULA.	Once a fortnight (Oct. to Mar.). Once a week (Apr. to Sept.).	M. Manson and L. Gray.	On 6 months' notice.	78 <i>l.</i> (2 <i>l.</i> a trip.)	By sailing vessel.
STRANRAER and LARNE. (<i>See below.</i>)					
STROMNESS and SOUTH ISLES.	4 days a week	R. Garden	On 6 months' notice.	180 <i>l.</i>	—
WEMYSS BAY and MILLPORT.	Thrice on week days in summer and twice in winter.	Caledonian Railway Co.	—	—	The service is provided under a general agreement with the Railway Co.
Ditto	Additional week day service in winter.	Caledonian Steam Packet Company, Ltd., per Capt. James Williamson.	On 6 months' notice.	200 <i>l.</i>	—
IRELAND.					
LARNE and STRANRAER.	Week days	Portpatrick and Wigtownshire Joint Committee.	On 12 months' notice.	13,500 <i>l.</i>	This amount includes also payment for Railway Services between Carlisle and Stranraer, Larne and Belfast, and Larne and Derry.
GALWAY and ABBAN ISLANDS.	3 days a week	Galway Bay Steamboat Co.	—	85 <i>l.</i>	No contract.

NOTES—

1. In addition to the payments given in detail above, Letters, &c. are conveyed by Private Ships to and from places in the United Kingdom for a certain fixed payment of 2*s.* 1*d.* per 100. The total amount paid at present is about 500*l.* a year.

2. There is also a number of small miscellaneous fixed payments for conveyance of Home Mails and for ferriage (including various payments for the conveyance of Mails in the Highlands and Islands of Scotland), not exceeding in any case 120*l.* a year.

3. For the conveyance of Homeward American Mails by steamer from Dublin to Holyhead when required, the London and North-Western Railway Company receives 60*l.* a trip.

APPENDIX D. Foreign and Colonial Packet Service.

Service.	Contracts.			Payment during the Year 1906-1907 (See footnote.)	Amount received.		Cost borne in respect of Mails despatched from the United Kingdom.
	Com- mencement.	Termination.	Penalties for Overtime.		By Contributions.	By Sea Postage for Mails despatched by Colonies and Foreign Countries.	
EUROPE :				£		£	£
Dover and Calais - - - -	31 June 1893 -	On 13 months' notice -	5s. for 30 minutes and 4s. for every additional 15 minutes.	35,000	-	-	35,000*
Harwich to the Hook of Holland -	1 Jan. 1904 -	On 6 months' notice -	-	850	-	-	850
†Newhaven to Dieppe - - -	1 July 1897 -	Do. -	-	60†	-	-	60
†Channel Islands and St. Malo and Granville - - - -	15 Feb. 1898 -	Do. -	-	38†	-	24	14
†Grimsby and Hamburg - - -	16 Apr. 1893 -	Do. -	-	1,469†	-	753	716
†London and Hamburg - - -	1 Jan. 1896 -	Do. -	-	983†	-	199	783
†Liverpool, Malta, and the Levant -	1 Jan. 1896 -	Do. -	-	101†	-	81	20
†United Kingdom and Lisbon - -	1 Jan. 1898 -	Do. -	-	210†	-	23	187
AMERICA :							
United Kingdom to United States :-							
Cunard Service - - - -	7 Aug. 1902 -	20 years certain -	-	68,000	-	-	135,080
White Star Service - - -	1 Aug. 1899 -	On 13 months' notice -	-	75,356§	-	13,111	-
American Service - - -	- - -	- - -	-	4,785§	-	-	-
New York and Bermuda - -	1 Jan. 1899 -	On 6 months' notice -	-	897†	-	57	780
Newfoundland - - - -	Colonial Contract -	- - -	-	2,000	-	-	2,000
†Liverpool, Belize, and Mexico -	1 Dec. 1891 -	On 6 months' notice -	-	667†	-	2	665
†United Kingdom and West Indies -	1 July 1905 -	- - -	-	1,288†	-	13	1,275
†United Kingdom and Costa Rica -	10 Oct. 1905 -	- - -	-	130†	-	5	115

APPENDIX E.

STATEMENT showing the NUMBER of POST TOWNS in ENGLAND and WALES, including the CHANNEL ISLANDS and the ISLE OF MAN, arranged in CLASSES according to the Number of Mails they receive *from*, and despatch *to*, LONDON.

YEAR.	Towns having One Mail.		Towns having Two Mails.		Towns having Three Mails.		Towns having Four Mails.		Towns having Five Mails.		Towns having Six Mails.		Towns having Seven Mails.		Towns having Eight Mails.	
	From London.	To London.	From London.	To London.	From London.	To London.	From London.	To London.	From London.	To London.	From London.	To London.	From London.	To London.	From London.	To London.
1905-06 -	8	5	10	55	118	151	235	187	142	104	60	63	30	34	13	12
1906-07 -	3	5	9	53	114	140	215	173	146	112	60	73	33	36	23	11

APPENDIX F.

Staff of Officers.

Totals 31 Mar. 1906.	Description of Officers.	England and Wales.		Ireland.		Scotland.		Totals.		Totals 31 Mar. 1907.
		Males.	Fe- males.	Males.	Fe- males.	Males.	Fe- males.	Males.	Fe- males.	
	A.									
1	Postmaster General and Minister assisting Postmaster General.	2	—	—	—	—	—	2	—	2
	B.									
11	Secretary, Second Secretaries, Assistant Secretaries, Comptroller and Accountant General, and Secretaries for Ireland and Scotland.	9	—	1	—	1	—	11	—	11
	C.									
42	Clerks, Class I., Secretary's Office.	42	—	—	—	—	—	42	—	42
	D.									
168	Heads of Departments, Staff Officers, and other Superior Officers:									
	Metropolitan - -	126	5	9	—	8	—	169	5	174
	Provinces - -	16	—	6	—	4	—			
	E.									
267	Surveyors and Assistant Surveyors.	59	—	15	—	13	—	277	—	277
	Travelling Clerks, Inspecting Telegraphists, and Stationary Clerks.	143	—	23	—	24	—			
	F.									
875	Head Postmasters:									
	Metropolitan - -	8	—	—	—	—	—	788	72	860*
	Provinces - - -	569	32	91	25	120	15			
	G.									
22,088	Sub-Postmasters:									
	Metropolitan - -	729	160	58	103	51	37	14,758	7,494	22,252†
	Provinces - -	11,087	5,163	1,571	1,159	1,262	872			
	H.									
10,180	Clerks and Superintending Officers:									
	Metropolitan - -	4,018	2,367	238	39	185	48	7,720	2,724	10,444
	Provinces - - -	2,761	224	101	7	357	39			
	I.									
32,098	Counter Clerks and Telegraphists, Sorters, Sorting Clerks and Telegraphists, Telegraphists, and Telephone Operators, &c.:									
	Metropolitan - -	9,626	3,007	628	121	460	154	23,533	9,178	32,711
	Provinces - - -	10,536	4,648	810	386	1,473	862			
65,730	Carried forward - - -	39,731	15,606	3,611	1,840	3,958	2,027	47,300	19,473	66,773

* Unestablished, 41; Established, 819.

† Unestablished, 21,706; Established, 547.

APPENDIX F.—*continued.*Staff of Officers—*continued.*

Totals 31 Mar. 1906.	Description of Officers.	England and Wales.		Ireland.		Scotland.		Totals.		Totals 31 Mar. 1907.
		Males.	Fe- males.	Males.	Fe- males.	Males.	Fe- males.	Males.	Fe- males.	
66,730	Brought forward . .	39,731	15,606	3,611	1,840	3,958	2,027	47,300	19,473	66,773
	J.									
41,989	Mechanics, Porters, Postmen, &c.:									
	Metropolitan . .	10,998	—	541	—	634	—	43,159	16	43,175
	Provinces . . .	25,028	8	2,001	1	3,962	7			
	K.									
87,763	Persons employed in un- established positions, viz., Assistants to Postmasters, Auxiliaries, Boy Messengers, Boy Clerks, Commissionaires, Female Servants, Telegraph Construction Hands, &c.:									
	Metropolitan . .	14,590	2,531	798	286	473	192	66,727	22,403	89,220
	Provinces . . .	36,459	15,320	8,873	1,546	5,539	2,618			
195,422	L.	126,801	33,465	15,819	3,673	14,566	4,844	157,186	41,982	199,168
10	Postmasters and Clerks, &c. abroad (under direction of Postmaster General) and agents in Foreign Countries for collection of postage, &c.	—	—	—	—	—	—	10	—	10
195,432	Totals . .	126,801	33,465	15,819	3,673	14,566	4,844	157,196	41,982	199,178

APPENDIX F.—*continued.***Mortality Table.**

	Number of Deaths during the Twelve Months ended 31st December 1906.											
	Chief Office.		Metro- politan Districts.		Rest of England.		Scotland.		Ireland.		Total.	
	Men.	Women.	Men.	Women.	Men.	Women.	Men.	Women.	Men.	Women.	Men.	Women.
GENERAL DISEASES.												
Scarlet fever - -	1	-	-	-	-	-	-	-	-	-	1	-
Influenza - -	1	1	1	-	9	-	1	-	-	-	12	1
Pneumonia - -	10	1	7	-	21	-	5	-	2	1	45	2
Enteric fever - -	1	-	1	-	4	1	2	-	1	-	9	1
Septicæmia - -	1	-	-	-	1	-	-	-	-	-	2	-
Erysipelas - -	-	-	-	-	1	-	-	1	-	-	1	1
Tubercle - -	18	-	10	-	24	1	6	-	8	1	61	2
Epidemic cerebro- spinal meningitis -	-	-	-	-	1	-	-	-	-	-	1	-
Acute rheumatism -	2	-	-	-	2	-	-	-	-	-	4	-
New growths :												
Malignant - -	6	-	2	1	15	-	3	-	2	-	28	1
Non-malignant -	-	-	1	-	-	-	1	-	-	-	2	-
Tetanus - -	1	-	-	-	-	-	-	-	-	-	1	-
Diabetes - -	1	-	2	-	4	-	-	-	-	-	7	-
Anæmia (pernicious) -	-	-	1	-	-	-	-	-	2	-	3	-
Old age - -	-	-	-	-	1	-	-	-	-	-	1	-
Debility - -	-	-	-	-	-	-	-	-	1	-	1	-
LOCAL DISEASES.												
Diseases of the—												
Nervous system -	2	-	4	1	18	2	-	2	4	-	28	5
Circulatory system	6	2	3	1	27	2	4	-	3	1	43	6
Respiratory system	5	-	9	-	6	1	2	-	1	-	23	1
Digestive system -	8	-	3	-	23	2	7	1	3	-	44	3
Urinary system -	6	-	2	1	8	2	4	-	2	-	22	3
Generative system -	-	-	1	-	-	-	-	-	-	-	1	-
Skin - -	-	-	-	-	-	-	-	-	1	-	1	-
Ear - -	1	-	-	-	1	-	-	-	-	-	2	-
INJURIES.												
Accident - -	3	-	2	-	6	2	1	-	-	-	12	2
CAUSES NOT SPECIFIED ABOVE.												
Suicide - -	-	-	-	-	6	-	-	-	-	-	6	-
Drowned - -	-	-	-	-	2	-	1	-	1	-	4	-
Gangrene - -	-	-	-	-	1	-	-	-	-	-	1	-
Not stated - -	-	-	1	-	-	-	1	-	-	-	2	-
Totals -	68	4	50	4	181	13	38	4	31	3	368	28

APPENDIX F.—*continued.***Table giving Causes of Retirement from the Service through ill-health.**

	Number of Persons retired during the Twelve Months ended 31st December 1906.											
	Chief Office.		Metropolitan Districts.		Rest of England.		Scotland.		Ireland.		Total.	
	Men.	Women.	Men.	Women.	Men.	Women.	Men.	Women.	Men.	Women.	Men.	Women.
GENERAL DISEASES.												
Influenza - -	-	-	-	-	3	-	-	-	1	-	4	-
Tubercle - -	24	5	18	-	39	5	10	3	12	2	103	15
Syphilis - -	-	-	-	-	1	-	-	-	-	-	1	-
Chronic rheumatism -	3	2	13	-	27	5	1	-	2	-	46	7
Gout - -	1	-	-	-	5	-	-	-	1	-	7	-
New growths:												
Malignant - -	-	-	3	-	4	-	-	2	-	-	7	2
Non-malignant - -	-	-	-	-	-	-	-	-	1	-	1	-
Anæmia - -	1	7	-	-	3	2	-	1	-	1	4	11
Diabetes - -	1	-	1	-	1	-	-	-	-	-	3	-
Debility:												
Nervous - -	2	11	8	2	29	8	1	1	1	-	41	22
General - -	1	32	1	-	10	3	3	2	3	2	18	39
Senile decay - -	1	-	2	-	2	-	1	-	-	-	6	-
LOCAL DISEASES.												
Diseases of the—												
Nervous system -	41	10	18	3	58	11	16	1	7	-	140	25
Eye - - -	5	3	3	1	1	-	2	-	1	-	12	4
Ear - - -	1	-	-	1	5	3	-	-	2	1	8	5
Nose - - -	-	-	-	-	-	1	-	-	-	-	-	1
Circulatory system	-	-	15	-	43	4	1	1	4	-	63	5
Respiratory system	3	1	11	-	25	2	3	-	1	-	43	3
Digestive system -	10	2	4	-	13	1	3	1	5	-	35	4
Thyroid body - -	1	-	-	-	1	-	-	-	-	-	2	-
Urinary system -	9	1	1	-	5	-	-	-	2	-	17	1
Organs of locomotion.	1	1	3	-	7	-	3	-	-	1	14	2
Skin - - -	1	-	1	-	3	-	1	-	1	-	7	-
INJURIES.												
Accident - -	2	-	1	-	8	-	-	-	1	-	12	-
CAUSES NOT SPECIFIED ABOVE.												
Operation - -	-	1	-	-	-	-	-	-	-	-	-	1
Telegraphist's cramp -	-	-	-	-	5	-	-	-	-	-	5	-
Writer's cramp - -	-	1	-	-	4	-	-	-	-	-	4	1
Totals . -	108	77	103	7	302	45	45	12	45	7	603	148

APPENDIX G.

STATEMENT showing the NUMBER of UNDELIVERED POSTAL PACKETS, &c., dealt with in each of the last TEN YEARS.

Year.	Letters.		Post-cards.	†Halfpenny Packets.	Newspapers.	Parcels.		*Unaddressed Postal Packets and Articles found loose.	Total.	Increase per cent.
	Total No.	No. which could neither be delivered to the Addressees nor returned to the Senders.				Total No.	No. which could neither be delivered to the Addressees nor returned to the Senders.			
1897-98	7,699,040	720,172	1,294,216	11,620,374	534,120	175,675	43,603	—	21,323,425	6·30
1898-99	8,553,336	665,274	1,387,084	11,301,606	553,622	188,837	44,976	—	21,985,065	3·10
1899-1900	8,954,041	698,294	1,495,085	10,613,853	597,919	206,944	51,066	—	21,867,842	Decrease. ·53
1900-01	9,786,370	832,421	1,619,391	11,911,614	627,642	227,252	53,059	—	24,172,769	Increase. 10·54
1901-02	10,183,866	986,120	1,757,081	11,523,272	615,285	242,472	58,272	—	24,321,376	·62
1902-03	10,905,023	1,188,981	1,888,098	12,084,150	600,661	255,289	57,879	—	25,683,216	5·60
1903-04	11,148,281	1,238,430	2,245,327	12,427,681	638,179	253,515	55,684	—	26,707,383	3·99
1904-05	10,743,447	1,058,575	2,386,124	12,559,049	622,731	257,389	60,388	—	26,568,740	Decrease. ·53
1905-06	10,868,272	1,008,017	2,656,770	12,439,377	473,346	248,526	52,381	412,883	27,099,174	Increase. 2·00
1906-07	11,120,695	980,960	3,152,027	14,276,123	551,599	242,865	47,147	423,085	29,766,394	9·84

* Included under the various headings of the Statement up to 1904-05.

† Including also foreign printed papers, &c., over 2 oz. in weight, prepaid at the halfpenny rate.

APPENDIX H.

Telegrams.

STATEMENT showing the TOTAL NUMBER of TELEGRAMS forwarded from TELEGRAPH OFFICES in the UNITED KINGDOM in each of the last TEN YEARS.

Year.	England and Wales.			Scotland.	Ireland.	United Kingdom.	(+) Increase or (-) Decrease per cent. per Annum.
	Provinces.	London.	Total.				
1897-98	42,542,000	27,419,000	69,961,000	8,464,000	4,605,000	83,080,000	+ 4.5
1898-99	44,782,000	28,468,000	73,250,000	9,065,000	4,729,000	87,044,000	+ 4.8
1899-1900	46,145,000	29,371,000	76,116,000	9,388,000	4,911,000	90,415,000	+ 3.9
1900-01	46,029,000	29,556,000	75,385,000	9,289,000	4,903,000	89,577,000	- .9
1901-02	46,858,000	28,924,000	75,782,000	9,730,000	4,920,000	90,432,000	+ 1.0
1902-03	47,675,000	30,103,000	77,777,000	9,566,000	5,128,000	92,471,000	+ 2.3
1903-04	47,341,000	28,216,000	75,557,000	9,302,000	5,138,000	89,997,000	- 2.7
1904-05	46,427,000	28,364,000	74,791,000	9,071,000	5,107,000	88,969,000	- 1.1
1905-06	46,979,000	28,201,000	75,180,000	9,128,000	5,170,000	89,478,000	+ .6
1906-07	47,507,000	27,463,000	74,970,000	9,203,000	5,320,000	89,493,000	+ .02

APPENDIX H.--*continued.***Telegrams—*continued.***

STATEMENT showing the NUMBER of TELEGRAMS forwarded from TELEGRAPH OFFICES in the UNITED KINGDOM during the Years 1905-1906 and 1906-1907; and the Increase or Decrease in each Month of the latter Year as compared with the corresponding Month of the former Year.

Month.	1905-1906.	1906-1907.	(+) Increase. (-) Decrease.
April - - -	6,898,000	6,927,000	+ 29,000
May - - -	7,997,000	7,903,000	- 94,000
June - - -	8,217,000	8,072,000	- 145,000
July - - -	8,409,000	8,380,000	- 29,000
August - - -	8,709,000	8,754,000	+ 45,000
September - - -	8,072,000	7,902,000	- 170,000
October - - -	7,593,000	7,953,000	+ 360,000
November - - -	7,136,000	7,159,000	+ 23,000
December - - -	6,557,000	6,731,000	+ 174,000
January - - -	7,164,000*	6,740,000	- 424,000
February - - -	5,906,000	5,989,000	+ 83,000
March - - -	6,820,000	6,933,000	+ 163,000
	89,478,000	89,493,000	+ 15,000

* Inflated by Telegrams in connection with the General Election.

APPENDIX H—continued.

Telegrams—continued.

STATEMENT showing the extent of TELEGRAPH and TELEPHONE BUSINESS passing over the GOVERNMENT CABLES between the UNITED KINGDOM and EUROPEAN COUNTRIES in each of the last TEN YEARS.

Year.	AUSTRIA-HUNGARY.			BELGIUM.			FRANCE.			GERMANY.			HOLLAND.			ITALY.			SWITZERLAND.			OTHER COUNTRIES.		
	Telegrams.			Telegrams.			Telegrams.			Telegrams.			Telegrams.			Telegrams.			Telegrams.			Telegrams.		
	From the U.K.	For the U.K.	From the U.K.	From the U.K.	For the U.K.	From the U.K.	From the U.K.	For the U.K.	From the U.K.	From the U.K.	For the U.K.	From the U.K.	From the U.K.	For the U.K.	From the U.K.	From the U.K.	For the U.K.	From the U.K.	From the U.K.	For the U.K.	From the U.K.	From the U.K.	For the U.K.	From the U.K.
1897-98	121,444	85,868	241,048	184,811	—	—	718,811	623,290	30,146	25,964	1,456	3,844	—	709	825,837	207,878	150,367	134,940	58,790	45,207	85,488	87,854	—	—
1898-99	128,099	89,720	259,125	208,175	—	—	746,189	647,874	36,560	32,622	1,618	3,961	—	702	852,187	221,320	164,827	135,568	59,563	47,943	82,123	82,522	—	—
1899-1900	144,584	102,010	283,238	222,029	—	—	785,817	668,927	36,569	34,887	2,562	4,184	—	780	877,831	238,969	169,892	136,327	68,925	54,918	79,910	76,651	—	—
1900-01	148,984	98,185	272,520	219,802	—	—	800,898	691,582	32,279	30,388	2,588	3,976	—	808	403,603	232,245	178,183	138,919	66,155	50,328	79,683	78,115	—	—
1901-02	146,612	105,682	270,479	221,967	—	—	770,641	661,027	30,310	28,444	2,563	3,979	—	762	434,747	268,870	183,519	147,144	70,921	57,257	86,174	88,465	—	—
1902-03	150,445	112,829	275,535	230,969	—	—	793,538	675,048	34,348	31,946	2,568	3,061	—	447	455,186	280,683	188,686	148,682	71,980	57,463	108,164	96,822	—	—
1903-04	161,462	117,384	274,544	231,612	4,126	3,536	806,787	689,288	35,066	31,040	2,763	3,270	—	447	437,555	269,910	189,532	152,899	74,297	61,072	106,545	98,067	—	—
1904-05	170,656	119,009	291,086	239,906	6,335	5,064	850,781	709,510	37,327	33,738	2,914	3,214	—	398	408,922	278,210	193,186	151,905	83,787	67,379	92,161	84,490	—	—
1905-06	176,140	127,154	301,764	251,238	7,257	6,233	907,562	751,619	43,940	45,680	4,086	2,322	—	513	496,554	290,815	207,861	163,814	85,478	70,042	107,473	100,142	—	—
1906-07	185,313	133,605	315,727	261,860	9,514	11,535	947,155	800,172	41,104	49,701	5,142	2,151	—	571	499,583	299,288	216,197	176,777	91,931	77,011	121,464	102,255	—	—

* Telegrams transmitted by Cable Companies are not included in these numbers.

APPENDIX I.

TABLE showing the ESTIMATED VALUE of SERVICES rendered by the POST OFFICE on behalf of other GOVERNMENT DEPARTMENTS in each of the last TEN YEARS.

Year.	POSTAL.					TELEGRAPH.			Total.	Increase or Decrease per Cent.
	Conveyance of Correspondence, &c.	Issue of Inland Revenue Licenses.	Issue of Inland Revenue Stamps.	Money Orders.	Postal Orders (for use on H.M. Ships).	Total.	Inland Telegrams forwarded.	Rentals, &c. on Wires provided.	Salaries, Wages, &c. of Telegraphists lent to Admiralty, War Office, &c.	
1897-98	£ 179,292	£ 10,851	£ 11,537	£ 18,066	£ 946	£ 213,632	£ 16,923	£ 21,146	£ 3,297	£ 255,053 Decrease. 7·37
1898-99	165,504	11,348	11,775	18,305	986	207,918	18,146	34,140	3,454	263,667 Increase. 8·38
1899-1900	153,946	11,610	11,933	20,764	1,063	203,315	34,064	31,011	5,671	273,061 5·56
1900-01	164,207	11,945	11,819	27,421	1,192	218,584	23,104	32,524	13,136	297,348 8·39
1901-02	182,964	12,390	11,897	23,480	1,243	233,964	23,199	31,263	21,981	316,412 6·41
1902-03	192,013	12,720	12,082	26,343	1,410	244,568	46,632	31,917	13,532	336,669 6·41
1903-04	214,961	12,519	11,981	23,983	1,550	265,294	23,197	34,066	4,664	327,251 Decrease. 2·80
1904-05	191,768	13,203	12,302	24,881	1,764	243,928	22,919	39,763	5,622	312,332 4·59
1905-06	162,689	13,432	12,468	25,836	1,886	216,311	18,707	39,123	4,593	278,734 10·73
1906-07	181,443	13,841	12,632	25,287	1,972	235,225	22,937	46,276	4,227	308,665 Increase. 10·74

APPENDIX J.

Post Office Savings Bank.

APPENDIX J.

Post Office
STATEMENT of BUSINESS for

Year ended 31st Dec.	Number of Post Office Savings Bank Offices.	Deposits.*				Withdrawals.†		
		Number.	Amount.	Average Amount.	Number of Persons who deposited in Single Sums the Entire Amount allowed in the Year.	Number.	Amount.	Average Amount.
			£	£ s. d.			£	£ s. d.
1897	12,212	13,012,935	35,757,476	2 14 11	53,500	4,670,483	30,624,995	6 11 2
1898	12,582	13,757,244	37,361,838	2 14 4	54,000	4,957,895	32,952,829	6 12 11
1899	12,995	14,654,609	39,122,160	2 13 5	51,700	5,094,033	35,171,475	6 18 1
1900	13,341	14,969,346	40,516,434	2 14 2	48,100	5,406,347	38,231,372	7 1 5
1901	13,672	15,018,645	41,452,051	2 15 2	48,900	5,748,024	39,890,043	6 18 9
1902	14,048	15,250,316	42,217,003	2 15 4	49,800	6,012,983	41,395,800	6 17 8
1903	14,362	15,325,618	40,857,206	2 13 4	46,200	6,180,419	42,786,025	6 18 5
1904	14,614	15,466,928	40,612,967	2 12 6	43,000	6,276,929	41,904,393	6 13 6
1905	14,862	16,320,204	42,300,617	2 11 10	44,700	7,155,283	42,056,037	5 17 8
1906	15,055	17,997,023	43,980,579	2 8 11	43,200	8,629,749	43,763,002	5 1 5

* Including as well as Ordinary Deposits, (a) Deposits for immediate investment in Stock; (b) amounts realised by sale of Stock, and Stock Certificates obtained, the amount, when Stock is sold or a Stock Certificate obtained, being placed to the credit of the Savings Bank Account so as to be dealt with as a withdrawal; (c) Dividends; (d) Deposits for purchase of Annuities and payment of Insurance premiums, and (e) amounts credited to Accounts in respect of sums payable to Annuitants and Insurants and their representatives. For particulars, see statements of Government Stock business and Annuity and Insurance business.

† Including, as well as Ordinary Withdrawals, (a) Withdrawals for investment in Stock, with commission; (b) Withdrawals consequent on sale of Stock and obtaining Stock Certificates, with commission and fees; (c) Withdrawals for purchase of Annuities and payment of Insurance premiums; and (d) amounts paid to Annuitants and Insurants and their representatives. For particulars, see statements of Government Stock business and Annuity and Insurance business.

APPENDIX J.

Savings Bank.

each of the last TEN YEARS.

Interest credited to Depositors.	Amount, including Interest standing to credit of all open Accounts at close of the Year.	Number of Accounts.			Average Amount standing to credit of each open Account.	Expenses of Management.			Year ended 31st Dec.
		Opened.	Closed.	Remain- ing open at close of the Year.		Total.	Rate per Cent. to Total Amount standing to credit of Depositors.	Average Cost per Trans- action.	
£	£				£ s. d.	£	s. d.	d.	
2,665,664	115,896,786	1,309,995	892,206	7,239,761	16 0 2	450,938½	7 9½	6½	1897
2,838,304	123,144,099	1,333,895	942,654	7,630,502	16 2 9	450,641½	7 3½	5½	1898
3,023,621	130,118,605	1,373,799	957,621	8,046,690	16 3 5	473,877½	7 3½	5½	1899
3,145,978	135,540,645	1,376,171	962,868	8,439,963	16 1 3	487,025½	7 2½	5½	1900
3,231,263	140,392,916	1,376,846	1,029,154	8,787,675	15 19 6	506,093½	7 2½	5½	1901
3,390,969	144,605,088	1,386,962	1,041,476	9,133,161	15 16 8	526,007	7 3½	5½	1902
3,468,578	146,135,147	1,342,040	1,071,349	9,403,852	15 10 10	549,140	7 6	6½	1903
3,496,633	148,339,354	1,350,857	1,060,992	9,673,717	15 6 8	537,672½	7 2½	5½	1904
3,567,206	152,111,140	1,435,329	1,145,997	9,963,049	15 5 4	527,556½	6 11½	5½	1905
3,667,729	155,996,446	1,600,105	1,230,370	10,332,784	15 1 11	598,925½	7 8½	5½	1906

† The charges of management in 1897, 1898, and 1900 include the sums of 357£., 317£., and 150£. respectively for purchase of land, while the charges in 1897, 1898, 1899, 1900, 1901, 1904, 1905 and 1906 also include 12,539£., 1,371£., 1,154£., 420£., 2,765£., 995£., 270£., and 152£. respectively for new buildings. Omitting these amounts, but adding interest at the rate of 5 per cent. thereon, the cost per transaction will be, in 1897, 5½d., in 1898, 5½d., in 1899, 5½d., in 1900, 5½d., in 1901 5½d., in 1904, 5½d., in 1905, 5½d., and in 1906, 5½d., and the percentage of expenses to capital 7s. 6½d., 7s. 3½d., 7s. 3½d., 7s. 2½d., 7s. 2½d., 6s. 11½d., and 7s. 8d. respectively. Prior to the passing of the Post Office Savings Bank Act, 1861, it was estimated (*see* Parliamentary Paper, No. 523, 1861) that the average cost of each transaction would be 7d.

APPENDIX J.—*continued.*Post Office Savings Bank—*continued.*

GOVERNMENT STOCK.

TABLE showing the BUSINESS done during the last TEN YEARS.

Year.	Stock Accounts.			Investments			Dividends credited to Stock Holders.			Sales.			Stock Certificates obtained.	Transfers.			Commission and Bank of England Fees.	Stock remaining to credit of Stock-holders at close of the Year.	
	Number opened.	Number closed.	Number remaining open at close of the Year.	Number.	Amount of Money invested.	Amount of Stock bought.	Number.	Amount.	Number.	Amount of Stock sold.	Amount realised.	Amount.	To Bank of England.	To Trustees Savings Banks.	From Trustees Savings Banks.	Total.	Average per Ac- count.		
	£	£	£	£	£	£	£	£	£	£	£	£	£	£	£	£	£	£	£
1887	9,139	8,208	69,113	18,935	1,078,849	967,142	275,502	191,664	13,769	796,486	891,927	1,700	28,511	482	1,710	2,259	7,033,564	102	
1888	10,366	7,408	73,071	20,162	1,303,960	1,183,029	290,586	198,991	12,567	714,285	787,898	2,200	38,715	392	1,183	2,424	7,463,134	104	
1889	13,938	7,011	78,998	26,431	1,770,170	1,670,354	294,186	212,362	11,789	696,135	735,721	4,960	46,039	1,094	3,543	2,932	8,397,213	106	
1890	22,044	7,077	83,965	41,030	2,830,513	2,530,918	339,463	255,695	12,093	678,374	678,510	6,000	73,189	1,448	1,170	4,974	10,468,290	111	
1891	23,333	7,789	109,509	46,550	3,065,698	3,192,154	398,597	316,098	13,574	761,689	729,531	6,100	107,851	727	2,053	4,901	12,786,190	117	
1892	19,184	9,967	118,696	40,893	2,698,988	2,644,447	451,234	371,407	17,221	1,064,193	1,012,042	9,300	133,133	832	2,438	4,656	14,385,617	120	
1893	22,512	10,266	131,343	47,726	2,921,499	3,131,172	487,146	400,381	17,742	1,085,878	1,012,228	14,400	151,948	2,165	2,850	5,263	16,166,548	123	
1894	17,985	10,746	138,582	39,633	2,383,877	2,507,546	538,378	438,315	18,948	1,131,543	1,027,016	10,460	173,640	2,705	2,194	4,613	17,337,960	125	
1895	14,593	13,483	139,992	32,301	2,066,041	2,212,285	554,168	460,387	22,824	1,507,219	1,396,311	10,550	174,707	2,465	2,380	4,538	17,877,644	128	
1896	16,938	11,811	145,119	39,134	2,451,570	2,674,494	563,321	478,415	20,094	1,349,044	1,234,022	9,400	207,085	3,467	3,057	4,919	18,960,199	131	

APPENDIX J.—*continued.*Post Office Savings Bank—*continued.*

(II.) TABLE showing the Number and Amount of CONTRACTS entered into from the Commencement of Business on 17th April 1865 to the 31st December 1906, and the Number and Amount of CONTRACTS in existence on the 31st December 1906.

	CONTRACTS ENTERED INTO				TOTAL.	
	From 17 April 1865 to 31 December 1905.		From 1 Jan. 1906 to 31 December 1906.			
	No.	Amount.	No.	Amount.	No.	Amount.
		£ s. d.		£ s. d.		£ s. d.
Contracts for Annuities entered into from the commencement of business on 17th April 1865 to 31st December 1906. viz. :—						
Immediate Annuities - -	45,814	991,928 9 0	1,797	43,241 5 8	47,611	1,035,169 14 8
Deferred Annuities and Monthly Allowances, Money not returnable - -	,449	25,951 18 8	58	1,307 6 6	1,507	27,259 5 2
Deferred Annuities and Monthly Allowances, Money returnable - - - -	2,703	59,390 13 6	74	1,618 8 0	2,777	61,009 1 6
Contracts for Sums payable at Death entered into from the commencement of business on the 17th April 1865 to the 31st December 1906 - - - -	23,641	1,433 121 2 2	641	28,054 6 3	24,282	1,461,175 8 5
Contracts for Annuities in existence on the 31st December 1906, viz. :—						
Immediate Annuities - -	- -	- - -	- -	- - -	27,010	661,526 18 4
Deferred Annuities and Monthly Allowances, Money not returnable - - -	- -	- - -	- -	- - -	1,174	20,875 4 6
Deferred Annuities and Monthly Allowances, Money returnable - - -	- -	- - -	- -	- - -	1,363	29,322 8 6
Contracts for Sums payable at Death, in existence on the 31st December 1906 - - -	- -	- - -	- -	- - -	13,269	768,887 2 1

APPENDIX J.—*continued.*

Post Office Savings Bank—*continued.*

EXTRACT from PARLIAMENTARY PAPER (214) ORDERED
by the HOUSE of COMMONS to be printed, 25 June 1907.

APPENDIX J.—*continued.*

Post Office Savings Bank.

Account of all Deposits Received and Paid from 1st January to 31st December 1906.

	£	s.	d.	£	s.	d.
Balance brought forward	-	-	-	152,111,139	16	2
To Cash received from Depositors from 1st January to 31st December 1906	-	-	-	43,980,578	17	7*
	-	-	-	196,091,718	13	9
To interest thereon up to 31st December 1906, computed according to Act 24 Vict., c. 14, sections 7 and 8, and added to the Principal Money of the said Depositors	-	-	-	3,667,729	5	10
	-	-	-	199,759,447	19	7
				43,763,001	10	1
				155,996,446	9	6
				199,759,447	19	7

By Repayments from 1st January to 31st December 1906, viz. :—

Cash Paid - - - - - £ 43,675,181 2 5†
Warrants issued, but not cashed at date - - - - - 87,820 7 8

Balance due at the close of the Year 1906, to all Depositors, inclusive of Interest to 31st December 1906 - - - - - - - - - -

* Including the sum realised by the sale of Government Stock, viz., 1,246,889*l.* 1*s.* 10*d.*; the amount of dividends credited to Depositors, viz., 478,414*l.* 16*s.* 10*d.*; the amount credited as payments under Annuity and Insurance Contracts, viz., 670,763*l.* 3*s.*; and the amount of Government Stock transferred to the Depositors' own names in the books of the Bank of England, viz., 207,084*l.* 11*s.* 2*d.*

† Including the sum invested on behalf of Depositors in the purchase of Government Stock, and the Commission and Fees, amounting together to 2,459,545*l.* 13*s.* 3*d.*; the sum withdrawn as purchase money under Annuity and Insurance Contracts, viz., 591,681*l.* 4*s.* 4*d.*, and the amount of Government Stock transferred to the Depositors' own names in the books of the Bank of England, viz., 207,084*l.* 11*s.* 2*d.*

General Post Office, { CHARLES A. King, Comptroller and Accountant General.
10th June 1907. { H. DAVIES, Controller of Post Office Savings Bank.

SYDNEY BUXTON,
Postmaster General.

APPENDIX J—continued.

Post Office Savings Bank.

STATEMENT showing the AGGREGATE AMOUNT of the LIABILITIES of the GOVERNMENT to DEPOSITORS in POST OFFICE SAVINGS BANKS on 31st December 1906, and the Nature and Amount of the SECURITIES held by the Commissioners for the Reduction of the National Debt to meet those Liabilities at that date.

Liabilities.	Nature and Amount of Securities held.		
	£	s.	d.
Balance due to Depositors on 31st December 1906 (including interest) -	155,996,446	9	6
Warrants issued to Depositors, but not cashed, on 31st December 1906 -	87,320	7	8
Amount of expenses remaining unpaid (partly estimated) -	58,279	17	11½
Aggregate liabilities £	156,142,546	15	14½
<p>SYDNEY BUXTON, Postmaster General.</p> <p>CHARLES A. KING, Comptroller and Accountant General.</p> <p>H. DAVIES, Controller of Post Office Savings Bank.</p> <p>General Post Office, 10th June 1907.</p>			
<p>NOTE.—In addition to the above securities the Central Savings Bank Premises are valued at £355,000.</p> <p>W. G. TURNER, Assistant Comptroller General.</p>			
<p>Stocks:—</p> <p>2½ per cent. Consols -</p> <p>2½ per cent. Annuities -</p> <p>Local Loans 3 per cent. Stock -</p> <p>2½ per cent. Annuities (1905) -</p> <p>2½ per cent. Guaranteed Land Stock -</p> <p>2½ per cent. War Stock -</p> <p>Transvaal 3 per cent. Guaranteed Stock -</p> <p>Guaranteed 2½ per cent. Stock -</p> <p>Bills and Bonds:—</p> <p>Treasury Bills -</p> <p>Exchequer Bonds (1909) -</p> <p>Do. (1911) -</p> <p>Egyptian Guaranteed 3 per cent. Bonds -</p> <p>Greek Guaranteed 2½ per cent. Bonds -</p> <p>Irish Land Commission Bonds -</p>			
<p>£</p> <p>59,977,687</p> <p>8,906,260</p> <p>19,292,969</p> <p>636,000</p> <p>5,408,539</p> <p>750,000</p> <p>910,800</p> <p>3,071,945</p> <p>440,000</p> <p>135,000</p> <p>2,200,000</p> <p>670,000</p> <p>1,387,500</p> <p>400,000</p>			
<p>s.</p> <p>17</p> <p>18</p> <p>2</p> <p>0</p> <p>14</p> <p>0</p> <p>0</p> <p>7</p> <p>0</p> <p>0</p> <p>0</p> <p>0</p> <p>0</p> <p>0</p>			
<p>d.</p> <p>7</p> <p>5</p> <p>8</p> <p>0</p> <p>8</p> <p>0</p> <p>0</p> <p>11</p> <p>0</p> <p>0</p> <p>0</p> <p>0</p> <p>0</p>			
<p>Bills and Bonds—cont.</p> <p>2½ per cent. War Bonds -</p> <p>Mauritius 8 per cent. Guaranteed Certificates -</p> <p>Annuities for Terms of Years:—</p> <p>Annuities operating to replace Stock:—</p> <p>Amount of Stock still outstanding -</p> <p>Annuities operating to replace cash:—</p> <p>Amount of cash still outstanding -</p> <p>Advances for which Annuities had not been granted on 31st December 1906 -</p> <p>Interest accrued -</p> <p>Cash Balance (including £86,853 14s. 3d. in hands of Postmaster General) -</p>			
<p>£</p> <p>276,000</p> <p>10,000</p> <p>9,249,671</p> <p>37,815,116</p> <p>3,216,154</p> <p>1,118,378</p> <p>194,432</p>			
<p>s.</p> <p>0</p> <p>0</p> <p>14</p> <p>18</p> <p>15</p> <p>16</p> <p>17</p>			
<p>d.</p> <p>0</p> <p>0</p> <p>0</p> <p>4</p> <p>0</p> <p>9</p> <p>10</p>			

APPENDIX K.

Money Orders.

MONEY ORDER BUSINESS in each of the last TEN YEARS.

Year.	INLAND ORDERS.			COLONIAL ORDERS.			FOREIGN ORDERS.			GRAND TOTAL.		
	Number.	Amount.	Increase per cent. on Number.	Number.	Amount.	Increase per cent. on Number.	Number.	Amount.	Increase per cent. on Number.	Number.	Amount.	Increase per cent. on Number.
1887-98	9,129,609	27,494,145	1·3	567,315	1,849,871	Decrease. 1·0	1,131,334	2,777,563	9·3	11,128,258	82,114,579	1·8
1898-99	9,721,647	28,604,078	3·1	593,414	1,858,307	Increase. 4·6	1,160,140	2,816,132	2·5	11,475,201	83,278,517	3·1
1899-1900	10,232,890	30,505,351	5·8	617,340	1,876,411	4·0	1,177,229	2,819,500	1·4	12,087,459	85,201,262	5·7
1900-01	11,375,513	34,454,869	10·5	680,370	2,074,496	10·2	1,207,679	2,845,311	2·5	13,283,567	89,374,665	9·7
1901-02	11,892,333	36,660,120	4·5	784,735	2,463,714	15·3	1,298,342	3,045,387	6·5	13,983,410	92,169,201	5·2
1902-03	12,151,861	38,920,596	2·2	980,492	3,124,551	24·9	1,399,071	3,357,348	8·8	14,531,424	95,402,495	4·1
1903-04	11,261,745	35,430,349	Decrease. 7·3	1,188,073	3,608,353	21·2	1,514,355	3,677,504	8·2	13,984,173	92,716,206	Decrease. 3·9
1904-05	10,687,020	*35,870,862	5·0	1,165,989	3,478,693	Decrease. 1·9	1,541,987	3,811,937	1·8	13,404,946	†43,161,462	4·0
1905-06	10,768,785	36,872,608	Increase. 6·6	1,124,316	3,490,751	3·6	1,713,052	4,240,428	11·1	13,596,153	44,612,785	Increase. 1·4
1906-07	10,844,509	37,987,339	8·8	1,099,294	3,534,623	2·2	1,875,359	4,808,921	9·5	13,819,162	46,335,863	1·6

* This amount was understated in the 1904-5 Report as 35,644,916†.

† This amount was understated in the 1904-5 Report as 42,935,516†.

APPENDIX K.—*continued.***Money Orders—continued.**

YEAR.	ENGLAND AND WALES.						SCOTLAND.						IRELAND.					
	Number.	Amount.	Increase per cent. on Number.	Increase per cent. on Number.	Number of Money Orders issued to each 100 of population.	Number.	Amount.	Increase per cent. on Number.	Increase per cent. on Number.	Number of Money Orders issued to each 100 of population.	Number.	Amount.	Increase per cent. on Number.	Increase per cent. on Number.	Number of Money Orders issued to each 100 of population.	Number.	Amount.	Increase per cent. on Number.
1897-98	7,914,255	£ 23,511,925	1·6	6·2	25·2	967,740	£ 2,772,748	Dec. 2·4	3·9	22·7	547,514	£ 1,510,174	1·9	7·7	12·0			
1898-99	8,159,871	24,121,276	3·1	3·9	25·9	1,003,138	2,911,860	Inc. 3·6	5·0	23·6	555,638	1,570,942	2·0	4·0	12·3			
1899-1900	8,654,871	25,887,094	6·0	6·5	27·1	1,047,134	3,119,470	4·3	7·1	24·4	588,885	1,638,787	5·4	7·5	13·0			
1900-01	9,638,474	29,213,745	11·3	13·6	29·9	1,084,431	3,344,691	4·5	7·2	25·3	642,513	1,806,423	9·1	12·2	14·2			
1901-02	10,067,038	31,005,654	4·4	6·1	30·7	1,141,433	3,556,429	4·2	6·3	25·4	683,862	2,007,037	6·4	10·5	15·3			
1902-03	10,232,129	32,746,960	1·9	5·6	31·0	1,179,571	3,682,949	3·3	7·8	26·0	710,161	2,340,697	3·8	11·6	16·0			
1903-04	9,445,038	29,846,359	7·0	8·9	28·5	1,094,269	3,600,082	7·2	6·1	23·9	622,438	1,984,928	12·4	15·2	14·1			
1904-05	9,125,126	*30,171,772	Dec. 4·4	Inc. 1·1	26·9	997,410	3,671,510	Dec. 8·9	3·0	21·5	574,484	2,027,590	Dec. 7·7	Inc. 2·1	13·0			
1905-06	9,171,125	30,979,148	Inc. 5·6	2·7	26·2	966,047	3,807,177	1·1	3·7	21·3	591,613	2,086,283	Inc. 3·0	3·9	13·5			
1906-07	9,291,850	31,222,935	1·0	3·1	26·7	987,345	3,917,100	9	2·9	20·9	593,214	2,153,874	6	3·2	13·6			

* This amount was understated in the 1904-5 Report as 29,945,826.

APPENDIX K.—*continued.***Money Orders—*continued.***

STATEMENT showing the NUMBER and AMOUNT of MONEY ORDERS issued by and for other GOVERNMENT DEPARTMENTS, and by the METROPOLITAN POLICE, in each of the last TEN YEARS.

Year.	Admiralty.	Board of Education, England.	Board of Public Works, Ireland.	Board of Trade.	Civil Service Commission.	India Office.	Inland Revenue.	Metropolitan Police.	Office of Works.	Scotch Education Department.	War Office.	Total.
1897-98 { Number Amount £	487,760 1,491,322	11,364 106,617	293 323	75,542 45,782	1,057 3,868	1,718 7,069	625,521 2,037,317	12,923 179,643	8,682 24,218	360 4,044	630,113 2,341,145	1,853,926 6,241,353
1898-99 { Number Amount £	511,981 1,542,615	11,893 104,414	255 374	76,794 48,194	1,129 3,776	1,573 6,303	632,644 2,012,310	14,084 197,156	4,636 17,073	474 4,707	632,144 2,315,134	1,877,586 6,243,066
1899- 1900 { Number Amount £	534,102 1,533,155	12,163 106,664	165 54	76,216 80,178	1,264 4,203	1,413 5,573	659,228 2,054,326	16,272 214,715	4,410 18,074	457 4,634	797,234 2,789,796	2,102,904 6,841,371
1900-01 { Number Amount £	554,656 1,629,454	12,630 106,644	262 403	77,906 49,765	1,391 4,515	1,392 4,893	679,095 2,239,242	22,729 235,644	4,829 20,561	375 4,210	1,363,053 4,397,443	2,718,228 8,692,757
1901-02 { Number Amount £	569,718 1,663,595	11,663 103,218	126 41	76,572 47,516	1,390 4,426	1,233 4,621	746,063 2,725,506	18,583 240,105	6,644 36,861	457 4,743	1,339,518 4,299,301	2,781,966 9,099,890
1902-03 { Number Amount £	583,432 1,705,009	11,900 105,831	317 578	79,403 49,018	1,396 4,279	1,263 4,512	791,237 3,040,859	17,763 248,862	6,322 33,067	478 4,692	1,149,983 3,668,583	2,648,464 8,890,326
1903-04 { Number Amount £	614,997 1,756,525	7,631 42,298	396 363	76,423 46,864	1,293 4,072	1,151 4,261	836,446 3,162,144	17,914 239,597	7,253 40,805	979 5,346	948,393 2,981,701	2,512,290 8,204,276
1904-05 { Number Amount £	639,187 1,826,404	7,647 41,508	209 200	76,395 46,718	993 3,804	1,098 4,158	899,916 2,983,218	18,651 273,088	7,150 44,635	1,170 5,867	970,693 2,966,680	2,681,083 8,185,330
1905-06 { Number Amount £	625,736 1,967,792	6,775 37,660	1,110 1,495	76,523 46,665	769 2,230	1,074 4,064	909,504 3,179,639	19,431 285,635	7,301 47,006	533 5,063	1,043,550 3,095,826	3,694,393 8,672,970
1906-07 { Number Amount £	608,818 1,904,391	6,011 33,516	2,104 1,585	75,606 46,130	927 2,744	1,086 4,341	954,390 3,220,245	24,742 301,032	6,799 49,354	393 3,753	1,073,985 3,236,683	2,759,798 8,903,144

APPENDIX K.—*continued.***Money Orders—*continued.***

STATEMENT showing the NUMBER and AMOUNT of INLAND TELEGRAPH
MONEY ORDERS issued in each of the last TEN YEARS.

Year.	Number.	Amount.	Increase per cent. on Number.	Increase per cent. on Amount.
1897-98	205,754	£ 698,944	28·2	32·3
1898-99	257,650	878,072	25·2	25·6
1899-1900	311,943	999,086	21·1	13·8
1900-01	369,165	1,128,661	18·3	13·0
1901-02	411,952	1,240,619	11·6	9·9
1902-03	462,885	1,459,496	12·4	17·6
1903-04	475,738	1,384,925	2·8	Decrease. 5·1
1904-05	477,691	1,544,488	·4	Increase. 11·5
1905-06	508,543	1,646,882	5·4	6·6
1906-07	523,454	1,812,909	4·0	10·1

1st October 1898.—Private messages allowed in Telegrams of advice, and compulsory repetition abolished.

APPENDIX K.—*continued.*Money Orders—*continued.*

YEAR.	COLONIAL ORDERS.					FOREIGN ORDERS.				
	ISSUED IN THE UNITED KINGDOM.					ISSUED IN THE UNITED KINGDOM.				
	Number.	Amount.	Increase per cent. on Number.	Amount.	Increase per cent. on Number.	Number.	Amount.	Increase per cent. on Number.	Amount.	Increase per cent. on Number.
1897-98	137,855	£ 488,935	6·5	13·4	Dec. 3·2	386,231	£ 993,901	8·6	11·2	9·7
1898-99	142,169	497,629	3·2	2·8	Inc. 5·0	400,691	1,015,170	3·7	2·1	1·9
1899-1900	142,574	476,631	·2	Dec. 4·2	5·2	407,123	1,039,489	1·6	2·4	1·4
1900-01	140,772	449,463	Dec. 1·2	5·6	13·6	423,935	1,030,975	4·8	3·9	1·3
1901-02	142,114	456,901	Inc. ·9	Inc. 1·6	23·4	472,312	1,175,142	10·6	8·7	Inc. 6·0
1902-03	161,421	559,941	13·6	22·6	27·8	525,319	1,329,582	11·2	13·1	8·4
1903-04	174,630	584,954	8·2	4·5	17·9	546,693	1,445,655	4·6	8·7	10·1
1904-05	175,562	611,864	·6	4·6	Dec. 2·3	530,402	1,375,197	Dec. 5·3	Dec. 4·9	5·9
1905-06	176,059	646,321	·3	5·7	·8	543,476	1,409,749	Inc. 4·4	Inc. 2·5	16·5
1906-07	174,848	699,263	Dec. ·7	8·1	2·5	565,904	1,430,532	4·1	·8	12·0
										19·1

Money Orders—continued.

▲ 49330.

G

APPENDIX K.—*continued.***Money Orders—continued.**

TABLE showing the AMOUNT OF MONEY ORDER TRANSACTIONS between the UNITED KINGDOM and FOREIGN COUNTRIES in each of the last TEN YEARS.

YEAR.	Austria.		Belgium.		Denmark.		Egypt.		France.		Germany.		Holland.		Hungary.		Italy.	
	Issued in the U.K.	Issued in Austria.	Issued in the U.K.	Issued in Belgium.	Issued in the U.K.	Issued in Denmark.	Issued in the U.K.	Issued in Egypt.	Issued in the U.K.	Issued in France.	Issued in the U.K.	Issued in Germany.	Issued in the U.K.	Issued in Holland.	Issued in the U.K.	Issued in Hungary.	Issued in the U.K.	Issued in Italy.
1897-98	£ 52,704	28,961	£ 39,163	56,301	£ 17,193	£ 16,014	£ 5,000	£ 31,563	£ 149,109	£ 164,664	£ 203,751	£ 160,222	£ 50,616	£ 31,035	£ 11,445	£ 7,524	£ 69,752	£ 16,929
1898-99	66,556	34,131	38,612	53,234	17,355	19,351	5,985	50,675	155,206	175,332	201,124	160,936	47,798	32,039	15,002	9,312	71,275	16,325
1899-1900	85,680	33,774	40,449	59,766	19,787	21,280	6,094	49,874	155,418	170,130	205,117	172,668	39,654	32,685	20,394	9,345	76,176	16,132
1900-01	81,822	34,619	42,220	53,232	20,496	21,617	6,227	43,725	167,379	165,300	203,319	175,387	33,735	34,427	25,090	11,340	84,819	16,538
1901-02	83,280	38,798	45,691	60,562	22,212	18,380	6,597	41,919	179,874	176,301	219,231	192,552	40,625	35,973	36,960	12,261	94,230	13,307
1902-03	110,524	41,153	50,663	62,964	25,695	25,603	8,783	43,106	193,417	190,659	238,816	202,818	40,532	37,210	43,723	15,074	111,966	20,171
1903-04	159,988	46,002	50,809	66,676	27,177	26,180	9,272	48,005	205,004	212,488	238,639	216,251	60,749	36,119	59,210	19,162	133,599	23,426
1904-05	90,648	45,033	55,371	74,048	27,515	28,165	8,672	53,114	212,306	234,749	236,858	237,942	61,562	39,509	46,891	20,358	133,583	26,138
1905-06	93,766	47,141	61,808	94,677	24,970	28,463	8,733	63,112	227,593	251,938	233,921	261,377	63,353	44,735	13,830	16,850	122,766	27,124
1906-07	89,856	49,592	60,943	108,500	25,429	38,767	9,212	82,261	247,219	238,816	236,061	277,809	64,891	57,536	13,692	20,494	115,793	31,751

APPENDIX K.—continued.

Money Orders—continued.

TABLE showing the AMOUNT of MONEY ORDER TRANSACTIONS between the UNITED KINGDOM and FOREIGN COUNTRIES in each of the last TEN YEARS—continued.

Y.M.R.	Japan.		Norway.		Portugal.		Russia.		Sweden.		Switzerland.		United States.		Other Countries.		Total.
	Issued in the U.K.	Issued in Japan.	Issued in the U.K.	Issued in Norway.	Issued in the U.K.	Issued in Portugal.	Issued in the U.K.	Issued in Russia.	Issued in the U.K.	Issued in Sweden.	Issued in the U.K.	Issued in Switzerland.	Issued in the U.K.	Issued in U.S.	Issued in the U.K.	Issued in Other Coun-tries.	
1897-98	1,291	2,413	44,164	12,501	765	— †	£	£	£	£	£	£	£	£	£	£	£
							—	—	14,399	39,161	29,964	251,965	968,576	15,770	283,646	993,901	1,768,663
1898-99	1,351	2,827	42,139	14,622	1,123	231	—	—	14,397	38,964	30,065	255,367	962,539	13,991	330,446	1,016,170	1,800,963
1899-1900	1,561	2,344	45,253	15,282	1,116	653	—	—	15,425	41,846	31,256	246,312	1,039,444	8,881	110,121	1,039,469	1,780,011
1900-01	2,011	2,700	46,880	21,327	1,529	1,233	—	—	17,829	42,964	30,794	239,753	1,116,617	8,630	12,663	1,080,975	1,764,336
1901-02	2,275	3,046	50,703	18,094	2,033	1,354	—	—	16,466	46,481	33,796	281,887	1,169,877	7,634	11,507	1,175,142	1,870,285
1902-03	2,267	4,286	56,542	18,617	2,158	2,340	—	—	17,527	52,569	36,018	309,534	1,294,404	7,102	13,815	1,399,182	2,027,765
1903-04	2,531	4,224	58,471	18,067	2,394	3,043	—	—	18,095	54,325	39,288	301,989	1,440,414	7,442	14,479	1,445,685	2,231,849
1904-05	2,935	5,912	62,076	19,740	3,068	4,165	—	—	19,154	54,101	43,241	307,902	1,569,579	9,593	20,868	1,575,197	2,438,740
1905-06	3,184	7,323	47,627	21,073	2,601	7,473	—	—	19,627	55,814	46,460	304,377	1,850,776	15,880	30,924	1,409,749	2,539,677
1906-07	3,306	6,693	44,602	22,477	3,424	9,262	—	—	23,283	55,063	47,511	313,010	2,249,071	15,898	44,092	1,490,532	2,383,389

† The issue of Money Orders in Portugal on the United Kingdom was suspended.

APPENDIX K.—*continued.***Money Orders—*continued.***

STATEMENT showing the NUMBER and AMOUNT of TELEGRAPH MONEY ORDER TRANSACTIONS between the UNITED KINGDOM and FOREIGN COUNTRIES since the establishment of the FOREIGN TELEGRAPH MONEY ORDER SYSTEM.

Year.	Austria.	Belgium.	Denmark.	Egypt.	France.	Germany.	Hungary.	Italy.	Luxembourg.	Nether-lands.	Norway.	Roumania.	Sweden.	Switzer-land.	Total.
1898-9 { Number - Amount £	-	-	-	-	-	933	-	-	-	-	-	-	-	-	933
1899-1900 { Number - Amount £	26	176	-	-	-	5,102	-	-	-	-	-	-	-	-	5,102
1900-1 { Number - Amount £	138	941	-	-	-	3,101	2	-	1	403	21	7	-	37	3,774
1900-2 { Number - Amount £	451	758	-	-	-	16,884	11	-	10	1,430	113	43	-	219	18,789
1901-3 { Number - Amount £	2,345	4,787	-	-	-	3,811	89	231	-	922	243	57	19	296	6,827
1902-3 { Number - Amount £	562	1,049	-	20	2,227	20,949	485	1,687	-	3,549	1,558	267	135	1,610	37,172
1903-4 { Number - Amount £	2,855	6,304	-	195	13,471	4,606	139	456	10	1,643	373	53	137	403	11,678
1904-5 { Number - Amount £	701	1,199	-	38	3,340	24,537	1,659	3,252	71	7,194	2,355	326	890	2,634	66,733
1905-6 { Number - Amount £	3,705	7,739	-	319	19,188	5,094	197	552	11	2,372	351	57	199	410	14,511
1906-7 { Number - Amount £	910	995	-	31	4,537	26,887	1,031	3,471	70	9,782	1,973	360	1,323	2,503	78,351
1907-8 { Number - Amount £	4,845	5,531	-	294	26,700	5,645	229	614	11	2,683	398	89	233	507	16,891
1908-9 { Number - Amount £	665	907	-	32	4,876	30,728	1,337	4,379	32	10,066	2,177	484	1,479	3,353	91,435
1909-10 { Number - Amount £	5,218	7,718	-	523	28,319	5,625	220	610	9	2,404	367	76	182	552	16,526
1910-11 { Number - Amount £	21	1,297	17	71	5,383	43,128	2,106	6,356	41	10,951	3,046	554	1,451	5,306	113,717
1911-12 { Number - Amount £	7,514	16,689	127	1,270	33,926	5,534	227	686	7	3,161	404	99	197	583	18,787
1912-13 { Number - Amount £	802	1,590	229	96	5,149	46,886	2,036	6,837	31	13,707	3,121	678	1,799	5,071	139,402
1913-14 { Number - Amount £	7,412	20,737	1,751	2,121	55,073	5,953	222	753	9	3,935	372	122	256	595	20,068
1914-15 { Number - Amount £	-	-	-	-	-	50,470	2,337	7,185	116	23,651	2,861	714	2,632	5,006	182,066

APPENDIX L.

Postal Orders.

APPENDIX L.

Postal Orders.

Postal Orders issued in each of the last TEN YEARS.

Year.	IN THE UNITED KINGDOM.				IN THE COLONIES.				ON BOARD H.M. SHIPS.				TOTAL.				STAMPS AFFIXED.	
	Number.		Value.	Increase per Cent.	Number.	Value.	Increase per Cent.		Number.	Value.	Increase per Cent.		Number.	Value.	Increase per Cent.	Value.		
							Number.	Value.			Number.	Value.						
							£				£				£			
1897-98	71,232,000	25,827,000	£	6.3	4.8	149,000	88,000	4.2	3.5	276,000	181,000	5.7	6.5	71,657,000	26,196,000	£	4.8	14.5
1898-99	76,591,000	27,119,000		7.5	4.6	164,000	98,000	10.1	11.4	291,000	196,000	5.4	2.8	77,046,000	27,403,000		4.6	25.4
1899-1900	81,926,000	28,522,000		7.0	5.2	190,000	112,000	15.9	14.3	313,000	200,000	7.6	7.5	82,429,000	28,834,000		5.2	19.0
1900-01	85,185,000	29,761,000		4.0	4.3	205,000	121,000	7.9	8.0	351,000	224,000	12.1	12.0	85,741,000	30,106,000		4.4	4.3
1901-02	88,388,000	30,931,000		3.8	3.9	*2,300,000	*1,794,000	1,022.0	1,382.6	364,000	235,000	3.7	4.9	91,052,000	32,960,000		6.2	4.4
1902-03	92,050,000	31,954,000		4.1	3.3	*804,000	*679,000	Dec. 65.0	Dec. 62.2	414,000	267,000	13.7	13.6	98,268,000	32,900,000		Dec. 0.2	Inc. 4.1
1903-04	98,810,000	33,817,000		Dec. 2.4	5.8	312,000	186,000	61.2	72.6	449,000	298,000	8.5	11.6	90,571,000	34,301,000		Dec. 2.9	Inc. 3.4
1904-05	90,371,000	36,095,000		0.6	6.7	376,000	225,000	Inc. 20.5	Inc. 21.0	502,000	343,000	11.8	15.1	91,249,000	36,663,000		Inc. 0.7	5.9
1905-06	96,070,000	38,019,000		6.3	5.3	658,000	387,000	75.0	72.0	543,000	364,000	8.2	6.1	97,271,000	38,770,000		6.6	9.7
1906-07	100,584,000	39,910,000		4.7	5.0	1,074,000	574,000	63.2	48.3	589,000	394,000	8.5	8.2	102,247,000	40,878,000		5.1	1.4

* Including Postal Orders issued by the Army Post Office in South Africa.

† Falling off in number due to the increased number of denominations.

APPENDIX M.

Telephone Trunk Wires.

STATEMENT showing the NUMBER of CIRCUITS, MILES of WIRE, and CALLS in each YEAR since the TRUNK LINES of the NATIONAL TELEPHONE COMPANY were acquired by the STATE.

Year.	Circuits.	Increase.	Miles of Wire.	Increase.	Calls.	Increase.
1897-98	877	73	55,721	7,866	5,888,247	643,416
1898-99	953	76	63,109	7,388	7,066,609	1,178,362
1899-1900	1,029	76	69,713	6,604	8,091,631	1,025,022
1900-01	1,116	87	76,831	7,118	8,980,733	889,102
1901-02	1,165	49	83,302	6,471	10,080,716	1,099,983
1902-03	1,309	144	93,473	10,171	11,574,229	1,493,513
1903-04	1,418	109	102,799	9,326	13,467,975	1,893,746
1904-05	1,604	186	112,743	9,943	15,461,822	1,993,847
1905-06	1,755	151	128,063	15,320	17,974,039	2,512,217
1906-07	2,043	288	141,810	13,747	19,803,363	1,829,324

Provincial Telephone Exchange Wires.

STATEMENT showing the NUMBER of MILES of WIRE and EXCHANGE TELEPHONES in each of the last TEN YEARS.

Year.	Miles of Wire.	Increase.	Exchange Telephones.	Increase.
1897-98	3,968	673	1,957	94
1898-99	4,369	401	2,132	175
1899-1900	4,762	393	2,246	114
1900-01	5,199	437	2,686	440
1901-02	6,283	1,084	3,891	1,205
1902-03	7,372	1,089	5,218	1,327
1903-04	8,602	1,230	6,847	1,629
1904-05	9,893	1,291	8,644	1,797
1905-06	12,529	2,636	10,380	1,736
1906-07	14,370	1,841	12,006	1,626

APPENDIX M.—continued.

Private Wires.

STATEMENT showing the NUMBER OF CONTRACTS, MILES OF WIRE, and APPARATUS, and the RENTALS in each of the last TEN YEARS.

Year.	Contracts.	Increase.	Miles of Wire.	Increase.	Telephones and Telegraph Apparatus.	Increase.	Rentals.	Increase.
1897-98	-	2,608	78	23,146	4,051	5,459	101	£ 110,042
1898-99	-	2,676	68	25,829	2,683	5,429	170	£ 121,065
1899-1900	-	2,788	112	27,334	1,505	5,863	234	£ 126,132
1900-01	-	2,910	122	29,157	1,823	6,193	330	£ 132,424
1901-02	-	3,234	324	34,924	5,767	6,605	412	£ 151,853
1902-03	-	3,439	205	36,581	1,657	7,118	513	£ 163,638
1903-04	-	3,499	60	40,608	4,027	7,595	477	£ 169,769
1904-05	-	3,746	247	41,026	418	8,901	1,306	£ 172,953
1905-6	-	3,869	123	41,887	861	9,243	342	£ 177,111
1906-7	-	3,909	40	42,581	694	11,000	1,767	£ 183,008
								£ 4,406
								Inc. 11,023
								5,067
								6,292
								19,429
								11,783
								6,131
								3,184
								4,158
								5,897

* The rates for Private Wires were reduced in 1897 and existing rentals were reduced accordingly.

APPENDIX N.

Post Office Telephones.

GENERAL CAPITAL ACCOUNT to 31st March 1907,
showing the AMOUNT OF CAPITAL AUTHORIZED and its APPROPRIATION to the several TELEPHONE SERVICES.

Capital authorised by Parliament, viz. :—	£	s.	d.	Trunk Lines :—	£	s.	d.	£	s.	d.
Telegraph Acts, 1892-98 - - -	-	-	0	Purchased from the National Telephone Co. in 1896 - - -	-	459,114	3	7	-	-
Telegraph Act, 1899 - - -	-	-	0	Construction of Lines by Post Office :—	-	-	-	-	-	-
Telegraph Act, 1904 - - -	-	-	0	To 31st March 1906 - - -	-	2,438,388	19	1½	-	-
				Year ended 31st March 1907 - - -	-	478,749	0	4½	-	-
										3,376,353 3 0½
				London Exchange (including Private Wires) :—						
				Construction :—						
				To 31st March 1906 - - -	-	2,31,300	16	4½	-	-
				Year ended 31st March 1907 - - -	-	861,870	9	9½	-	-
				Expenditure on Sites and Buildings :—						
				To 31st March 1906 - - -	-	101,287	17	4	-	-
				Year ended 31st March 1907 - - -	-	6,816	11	4	-	-
				Miscellaneous Expenses :—						
				To 31st March 1906 - - -	-	11,222	15	8½	-	-
				Year ended 31st March 1907 - - -	-	2,197	7	2	-	-
										2,614,695 17 8½
				Provincial Exchanges (including Private Wires) :—						
				Construction to 31st March 1906 - - -	-	403,195	19	5½	-	-
				Year ended 31st March 1907 - - -	-	443,552	12	4	-	-
				Stores purchased and remaining unused on 31st March 1907 - - -	-	-	-	-	-	-
				Balance not expended on 31st March 1907 - - -	-	-	-	-	-	-
Total - - -	£	-	0	Total - - -	-	-	-	-	-	7,300,000 0 0

The amount of the capital advanced by the Treasury to 31st March 1907 was 7,130,000*l.* Repayment by the Post Office is effected by means of Terminable Annuities running for varying periods (12 to 20 years) and charged against Subhead R of the Vote. The amount so charged up to the 31st March 1906 was 1,836,542*l.* 1*s.*, for the year ended 31st March 1907 469,887*l.* 15*s.*, making in all 2,306,429*l.* 16*s.*, being 1,681,840*l.* 10*s.* 5*d.* in repayment of capital, and 624,589*l.* 5*s.* 7*d.* for interest.

APPENDIX O.

Post Office Telephones.

LONDON EXCHANGE SYSTEM.

AN ACCOUNT, partly estimated, of INCOME and EXPENDITURE, for the YEAR ended 31st March 1907.

INCOME.		EXPENDITURE.	
	£		£
Subscribers' Rentals :—			
Proportion of Subscriptions paid in 1905-6, but proper to 1906-7	102,720	Maintenance of System	50,210
Paid in the year 1906-7 :		Salaries, Wages, &c. of Staff, including provision for Pensions of Established Staff	77,143
At Flat Rates	£ 50,949	Rent, Rates, Fuel and Light, including estimated Rental Value of Premises already belonging to the Department	11,365
At Toll Rates	189,326	Miscellaneous Expenses (Stationery, Travelling, &c.)	3,933
Less proportion proper to 1907-8	240,275		
	116,729		
Message Fees, in addition to fixed minimum of 1 <i>l.</i> 10 <i>s.</i> per Message Rate Circuit	50,116		
Call Office Fees	11,079		
Rentals of wires leased to National Telephone Co.	42,813		
Miscellaneous receipts	4,169		
Value of services rendered to Government Departments without payment	2,886	Balance available towards meeting Depreciation, Interest, &c. (<i>vide</i> footnote)	187,861
	£ 330,512		£ 330,512

NOTE.—The estimated amount required to provide for depreciation of plant, inclusive of spare wires, is 81,545*l.*, and interest at 3 per cent. on the capital expenditure of 2,691,000*l.* is 80,730*l.*, making together 162,275*l.* The capital expenditure is the sum of 2,614,696*l.* shown in Appendix N, *plus* 121,583*l.*, the amount of salaries and cost of construction charged to the Parliamentary Vote, and *minus* 45,279*l.*, the expenditure on private wires charged to capital.

APPENDIX O—continued.

Post Office Telephones—continued.

PROVINCIAL EXCHANGE SYSTEM.

AN ACCOUNT, partly estimated, of INCOME and EXPENDITURE for the YEAR ended 31st March 1907.

INCOME.		EXPENDITURE.	
Subscribers' Rentals :—			£
Proportion of Subscriptions paid in 1905-6, but proper to 1906-7	- - - -	Maintenance of Provincial Exchange Systems	39,584
Paid in 1906-7	- - - - £	Salaries, Wages, &c., of Staff, including provision for Pensions of Established Staff	34,030
Less proportion proper to 1907-8	- - - - 62,483	Rent, Rates, Fuel and Light, including estimated Rental Value of Premises already belonging to the Department	3,532
Deduct amount payable to, in excess of that receivable from, National Telephone Company for terminal fees	- - - - 86	Miscellaneous Expenses (Stationery, Travelling, &c.)	1,600
Message Fees for excess calls	- - - - 74,172	Balance available towards meeting Depreciation, Interest, &c. (vide footnote)	38,227
Call Office Collections	- - - - 2,483		
Rentals of junction lines leased to National Telephone Company	- - - - 5,804		
Miscellaneous receipts	- - - - 4,137		
Value of services rendered to Government Departments without payment	- - - - 1,166		
	- - - - 931		
	£		£
	116,973		116,973

The estimated amount required to provide for depreciation of plant, inclusive of spare wires, is 29,035*l.*, and interest at 3 per cent. on the capital expenditure of 835,000*l.* is 25,050*l.*, making together 54,085*l.* The capital expenditure is the sum of 846,749*l.* shown in Appendix N, plus 87,925*l.*, the amount of salaries and cost of construction charged to the Parliamentary Vote, and minus 99,674*l.*, the expenditure on private wires charged to capital.

APPENDIX O—continued.

Post Office Telephones—continued.

TRUNK LINE SYSTEM.

AN ACCOUNT, partly estimated, of INCOME and EXPENDITURE for the YEAR ended 31st March 1907.

INCOME.		EXPENDITURE.	
Trunk Fees :—			
Gross value for year	£ 479,639	Maintenance of Trunk Line System	£ 77,130
Less Commission paid to Licensees for Collection, &c.	19,897	Salaries, Wages, &c., of Staff, including provision for Pensions of Established Staff	136,679
		Rent, Rates, Fuel and Light, including estimated Rental Value of Premises already belonging to the Department	12,900
Miscellaneous receipts	779	Miscellaneous Expenses (Stationery, Travelling, &c.)	8,353
Value of Services rendered to Government Departments without payment	240	Balance available towards meeting Depreciation, Interest, &c. (vide footnote)	225,699
	£ 460,761		£ 460,761

The estimated amount required to provide for depreciation of plant, inclusive of spare wires, is 104,496*l.*, and interest at 3 per cent. on the capital expenditure of 3,729,000*l.* is 111,870*l.*, making together 216,366*l.* The capital expenditure is the sum of 3,376,252*l.* shown in Appendix N, plus 352,748*l.*, the amount of salaries and cost of construction charged to the Parliamentary Vote.

APPENDIX O—continued.

Post Office Telephones—continued.

SUMMARY OF INCOME AND EXPENDITURE FOR THE YEAR ended 31st March 1907.

	Exchanges.		Trunk Lines.	Total.
	London.	Provincial.		
Income	£ 330,512	£ 116,973	£ 460,761	£ 908,246
Deduct:				
Working Expenses (including Day-to-Day Maintenance)	142,651	78,746	285,062	456,459
Balance available towards meeting Depreciation, Interest, &c.	187,861	88,227	225,699	451,787
Estimated amount required to provide for depreciation of plant, and interest at 3 per cent. on Capital as per footnotes on preceding Tables	162,275	54,085	216,366	432,726

APPENDIX P.

Inland Revenue Licenses.

NUMBER and DESCRIPTION of LICENSES issued by the POST OFFICE in each of the last TEN YEARS.

Year.	Brewers.	Dogs.	Male Servants.	Carriages.	Armorial Bearings.	Guns.	Game.	Game-keepers.	Motors.	Total Number.	Revenue.
1897-98 . .	18,717	1,254,907	102,797	804,918	32,715	176,008	46,969	3,902	—	1,885,933	1,085,388
1898-99 . .	18,089	1,287,504	118,094	321,777	36,063	179,886	46,898	4,019	—	2,007,350	1,134,510
1899-1900 . .	11,938	1,306,557	119,886	321,525	36,153	198,947	49,684	4,174	—	2,049,614	1,161,056
1900-01 . .	11,611	1,343,913	122,494	328,896	36,349	215,591	50,770	4,226	—	2,113,949	1,194,586
1901-02 . .	11,152	1,404,268	123,976	334,601	36,316	228,278	53,888	4,368	—	2,196,922	1,239,081
1902-03 . .	10,990	1,462,049	127,425	340,378	37,272	230,006	55,197	4,442	128	2,265,887	1,272,052
1903-04 . .	10,623	1,492,025	128,734	346,266	37,060	225,386	49,543	4,302	373	2,296,512	1,281,867
1904-05 . .	9,261	1,526,212	129,956	361,998	36,991	223,861	53,147	4,373	780	2,346,529	1,320,341
1905-06 . .	8,707	1,557,227	129,839	362,086	36,296	225,596	55,233	4,515	1,735	2,380,674	1,343,199
1906-07 . .	8,363	1,621,965	131,043	370,715	35,791	228,078	54,702	4,521	3,320	2,458,498	1,384,145

APPENDIX Q.

RETURN showing, for each YEAR from 1897-98 the REVENUE, EXPENDITURE, and NET REVENUE of the POSTAL SERVICES.

Year.	Revenue.				Expenditure.												Net Revenue.	Net Revenue after deducting Expenditure on Sites and Buildings from Total Expenditure.
	Postal Receipts.	Extra Receipts.	Estimated Value of Services to other Departments.	Total.	Sites and Buildings.		Superannuations and other non-effective Charges.	Salaries, Wages, &c.	Percentage of Salaries, &c. to Total Revenue.	Conveyance of Mails.*	Percentage of Conveyance of Mails to Total Revenue.	Packet Service.	Other Expenditure.		Total Expenditure.			
					Purchase.	Erection.							Under Post Office Vote.	Under other Votes.				
1897-98	12,206,694	—	213,662	12,420,376	52,764	153,309	224,224	5,267,555	42.41	1,512,605	12.18	746,767	545,305	200,688	8,683,317	69.91	3,737,069	3,923,153
1898-99	12,841,359	—	207,918	13,049,317	37,127	136,760	249,443	5,645,051	43.26	1,535,261	11.77	821,370	558,798	206,196	9,190,006	70.42	3,869,311	4,033,198
1899-1900	13,192,020	—	202,315	13,394,335	115,294	169,096	269,092	6,017,618	44.93	1,537,967	11.46	769,307	601,876	213,747	9,683,969	72.93	3,710,336	3,994,728
1900-01	13,776,886	—	218,564	13,995,470	78,789	156,373	286,255	6,339,390	45.30	1,575,540	11.26	764,905	605,954	234,478	10,041,584	71.74	3,963,886	4,189,046
1901-02	14,223,906	—	236,964	14,465,870	106,340	160,392	300,980	6,602,034	45.64	1,640,969	11.34	770,431	624,123	259,852	10,465,101	72.84	4,000,769	4,367,491
1902-03	14,760,694	—	244,568	15,005,262	112,038	205,630	311,232	6,841,382	45.59	1,663,288	11.10	770,385	643,926	270,057	10,819,338	72.11	4,185,324	4,502,892
1903-04	15,569,100	—	265,294	15,834,394	159,734	234,645	335,150	7,005,127	44.27	1,728,673	10.92	784,635	666,398	286,860	11,201,122	70.78	4,623,272	5,017,651
1904-05	16,031,050	—	243,928	16,274,978	82,604	274,175	354,832	7,199,248	44.24	1,831,864	11.26	740,126	699,634	293,816	11,446,379	70.33	4,893,669	5,185,478
1905-06	16,823,349	24,363	216,311	17,064,023	75,769	250,127	377,131	7,737,010	45.34	1,821,768	10.68	687,109	604,327	295,191	11,849,012	69.44	5,215,011	5,540,897
1906-07 (Estimated)	17,125,817	—	235,225	17,361,042	38,331	261,015	469,595	8,053,672	46.39	1,854,742	10.68	724,341	656,266	291,935	12,269,757	70.79	5,071,255	5,370,601

* The Railway Companies' share of the postage on Parcels is not included in these totals. The figures are shown in Appendix A., page 37.

APPENDIX R.

RETURN showing, for each YEAR from 1897-98, the REVENUE, EXPENDITURE, and NET REVENUE of the POST OFFICE TELEGRAPHS.

YEAR.	REVENUE.				EXPENDITURE.													
	Telegraph Receipts.	Extra Receipts.	Estimated Value of Services to other Departments.	Total.	Sites and Buildings.		Direct Charge to Vote.	Extensions.		Superannuations and other Non-Effective Charges.	Salaries, Wages, &c.	Percentage of Salaries to Total Revenue.	Maintenance of the Telegraph System.	Percentage of Main-tenance to Total Revenue.	Other Expenditure.		Total Expenditure.	
					Purchase.	Erection.		* Terminable Annuities for Advances under Telegraph Acts, 1892 to 1904.	Capital.						Interest.	Under Tele-Graph Vote.		Under other Votes.
(1)	(2)	(3)	(4)	(5)	(6)	(7)	(8)	(9)	(10)	(11)	(12)	(13)	(14)	(15)	(16)	(17)	(18)	
1897-98	£ 3,080,852	—	£ 41,371	£ 3,071,723	£ 36,824	£ 52,583	£ 191,986	£ 52,530	£ 22,130	£ 61,561	£ 2,081,009	67.74	£ 583,784	19.00	£ 222,081	£ 74,403	£ 3,378,841	
1898-99	3,204,396	—	55,749	3,260,145	28,806	52,323	153,651	48,930	25,730	73,439	2,171,518	66.60	617,616	18.94	230,649	79,352	3,482,014	
1899-1900	3,389,746	—	70,746	3,460,492	18,029	59,529	187,063	63,140	26,990	81,031	2,279,722	65.87	705,819	20.39	238,610	89,151	3,740,084	
1900-01	3,380,589	—	78,764	3,459,353	23,160	46,890	148,118	73,817	33,795	86,375	2,343,769	67.75	691,948	20.00	246,723	95,899	3,796,994	
1901-02	3,490,598	—	79,448	3,570,046	34,110	47,694	226,997	127,545	45,763	96,394	2,416,653	67.69	874,426	24.49	265,112	97,233	4,221,927	
1902-03	3,631,745	—	92,121	3,723,866	37,346	47,303	179,271	166,907	60,524	103,744	2,509,234	67.38	874,067	23.47	245,733	102,848	4,325,577	
1903-04	3,674,158	—	61,957	3,736,115	53,245	68,141	245,410	207,267	77,612	111,716	2,562,145	68.58	1,004,462	26.89	252,168	111,732	4,693,898	
1904-05	3,851,719	—	68,304	3,920,023	27,534	107,828	291,617	242,744	88,724	118,274	2,624,563	68.95	997,259	25.44	230,386	110,530	4,839,463	
1905-06	4,068,957	—	62,423	4,151,380	23,924	78,886	257,704	299,127	100,224	119,094	2,673,571	64.40	963,912	23.22	269,169	116,588	4,892,189	
1906-07 (Estimated)	4,295,790	—	73,440	4,369,230	11,774	89,122	305,253	351,246	118,642	125,823	2,732,452	62.31	958,293	21.93	234,555	113,125	5,021,285	

* The Annuities shown under the head of Extensions are also charged against the Vote; they are for varying periods (12 to 20 years). The advances in respect of which the Annuities were issued are shown in column 28 of this Appendix; the expenditure is shown in Appendices N. and O.

APPENDIX R.—*continued.*

RETURN showing, for each YEAR from 1897-98, the REVENUE, EXPENDITURE, and NET REVENUE of the
POST OFFICE TELEGRAPHS—*continued.*

Year.	(19)	Gross Revenue. (20)	Gross Expenditure. (21)	Percentage of Gross Expenditure to Gross Revenue. (22)	Balance of Gross Expenditure over Revenue. (23)	Expenditure in the nature of Capital (Sites, &c.). (24)	Net Revenue after deducting Expenditure in the nature of Capital (Sites, &c.) from Gross Expenditure. (25)	Interest on Balance of Stock created for Purchases of Telegraphs (10,867,644). (26)	Deficiency of Revenue to meet Gross Expenditure, including Interest on Stock as shown in Return prepared in pursuance of Section 4 of 39 Vict., c. 5. (27)	Advances under the Telegraph Acts, 1892-1904. (28)
1897-98	-	£ 3,071,723	£ 3,378,541	109·99	£ 307,118	£ 335,923	£ 32,805	£ 296,368	£ 606,006	£ 160,000
1898-99	-	£ 3,260,145	£ 3,462,014	106·80	£ 221,869	£ 283,710	£ 61,841	£ 296,968	£ 520,757	£ 133,336
1899-1900	-	£ 3,460,492	£ 3,749,064	108·34	£ 288,592	£ 327,751	£ 39,169	£ 298,600	£ 587,452	£ 280,000
1900-01	-	£ 3,459,353	£ 3,793,994	109·76	£ 337,641	£ 296,965	£ 40,666	£ 296,960	£ 636,501	£ 438,500
1901-02	-	£ 3,570,046	£ 4,221,927	118·26	£ 651,881	£ 436,346	£ 215,535	£ 298,560	£ 960,741	£ 861,500
1902-03	-	£ 3,723,966	£ 4,325,577	116·16	£ 601,711	£ 431,427	£ 170,264	£ 296,960	£ 900,571	£ 570,000
1903-04	-	£ 3,736,115	£ 4,686,996	125·64	£ 967,783	£ 574,063	£ 383,730	£ 278,463	£ 1,236,266	£ 780,000
1904-05	-	£ 3,920,023	£ 4,839,469	123·45	£ 919,436	£ 669,723	£ 246,713	£ 271,691	£ 1,191,127	£ 700,000
1905-06	-	£ 4,151,390	£ 4,892,199	117·85	£ 740,819	£ 639,641	£ 81,178	£ 271,691	£ 1,012,510	£ 750,000
1906-07 (Estimated).	-	£ 4,368,230	£ 5,021,295	114·92	£ 652,065	£ 748,395	£ 96,340	£ 271,691	£ 923,746	£ 1,380,000

APPENDIX S.

STATEMENT showing for each YEAR from 1897-98 the combined REVENUE, EXPENDITURE, and NET REVENUE of the
POSTAL and TELEGRAPH SERVICES.

YEAR.	REVENUE.			EXPENDITURE.										Per-centage of Total Expen- diture to Total Revenue.	Net Revenue.
	Receipts.	Estimated Value of Services to other Depart-ments.	Total.	Salaries, Wages, &c.			Superannuations and other Non-Effective Charges.		Sites and Buildings.		Other Expenditure.				
				Amount.	Per-centage to Total Revenue.	Per-centage to Total Expen- diture.	Amount.	Per-centage to Total Expen- diture.	Amount.	Per-centage to Total Expen- diture.	Amount.	Per-centage to Total Expen- diture.			
													Total.		
1897-98	£ 15,237,046	£ 255,063	£ 15,492,069	£ 7,345,564	47·43	60·92	£ 285,785	2·37	£ 275,500	2·28	£ 4,152,309	34·42	£ 12,062,158	77·86	£ 3,429,941
1898-99	16,044,795	263,667	16,308,462	7,816,569	47·93	61·68	322,882	2·55	255,016	2·01	4,277,553	33·76	12,672,020	77·70	3,637,442
1899-1900	16,581,766	273,061	16,854,827	8,297,340	49·23	61·77	350,123	2·61	361,980	2·69	4,423,670	32·93	13,433,083	79·70	3,421,744
1900-01	17,157,475	297,348	17,454,823	8,683,159	49·75	62·75	372,630	2·69	305,212	2·21	4,477,577	32·36	13,838,578	79·28	3,616,245
1901-02	17,719,504	316,412	18,035,916	9,018,687	50·00	61·41	397,374	2·71	343,526	2·37	4,922,441	33·62	14,637,028	81·43	3,346,888
1902-03	18,392,439	336,689	18,729,128	9,350,616	49·93	61·74	414,976	2·74	402,917	2·66	4,977,006	32·96	15,145,515	80·87	3,583,613
1903-04	19,233,268	327,251	19,560,509	9,667,272	48·91	60·19	446,866	2·81	515,763	3·24	5,365,117	33·75	15,865,020	81·26	3,695,469
1904-05	19,862,769	312,232	20,185,001	9,823,811	48·64	60·32	473,096	2·91	492,141	3·02	5,406,690	33·75	16,365,738	80·64	3,909,263
1905-06	20,596,689	278,794	21,215,403	10,410,581	49·07	62·19	496,235	2·96	428,696	2·56	5,405,709	32·29	16,741,211	78·91	4,474,192
1906-07 (Estimated)	21,421,607	308,665	21,730,272	10,776,124	49·59	62·25	535,418	3·09	391,242	2·96	5,608,288	32·40	17,311,072	79·66	4,419,200

APPENDIX T.

**Extract from the Finance Accounts for the
Year ended 31st March 1907.**

APPENDIX T.

**Extract from the Finance Accounts for the
Year ended 31st March 1907.**

*Inserted by desire of the Select Committee on Estimates, Revenue
Departments.*

**DETAILED STATEMENT of the GROSS RECEIPTS and NET
RECEIPTS of the REVENUE.**

POST OFFICE.

	£	s.	d.	£	s.	d.
Gross Receipts :						
From Postage Stamps sold by Postmasters - - -	17,696,597	9	3			
From Postage Stamps sold by Stamp Distributors of Inland Revenue -	263,151	16	3½			
				17,959,749	5	6½
From Postage collected in cash by Country Postmasters - -	184,021	5	8½			
From Postage collected in cash in London, Dublin, and Edinburgh -	251,674	4	9¾			
				435,695	10	6¼
From Postage collected for credit of United Kingdom by Colonial Offices	51,244	8	5¾			
From Postage collected for credit of United Kingdom by Foreign Offices, &c. - - -	147,162	11	9			
				198,407	0	2¾
From Commission on Money Orders -	153,713	3	4½			
Ditto Postal Orders -	415,040	19	3½			
				568,754	2	8
From Miscellaneous Receipts - -	-	-	-	45,616	16	1¼
				19,208,222	15	0¾
Payments out of Receipts :						
For Postage, &c., refunded - -	29,499	0	6¾			
To Inland Revenue Department -	582,520	0	0			
To Railway Companies, &c., on account of Parcel Post - - -	1,031,768	0	7			
For Postage collected for credit of Colonial Offices - - -	263,135	19	11			
For Postage collected for credit of Foreign Offices, &c. - - -	175,482	7	0¾			
				2,082,405	8	1½
Net Receipts	-	-	£	17,125,817	6	11¼
Payments into Exchequer	-	-	-	£17,170,000	0	0

General Post Office, }
5th June 1907.

CHARLES A. KING,
Comptroller and Accountant-General.

APPENDIX T.—*continued.*

TELEGRAPH SERVICE.

	£	s	d.	£	s	d.
Gross Receipts :						
For transmission of Telegrams, &c.,						
collected in Cash - - -	2,172,544	7	9			
For transmission of Telegrams, &c.,						
collected in Stamps - - -	2,663,645	9	6½			
				4,836,189	17	3½
Payments out of Receipts :						
To Cable Companies, &c. - -	536,049	15	2			
To Telegram Moneys refunded, &c. -	4,349	18	8½			
				540,399	13	10½
Net Receipts - - -			£	4,295,790	3	5
Payments into Exchequer - - -				£4,255,000	0	0

General Post Office, }
5th June 1907.

CHARLES A. KING,
Comptroller and Accountant-General.

APPENDIX U

SUMMARY of STATISTICS for the YEAR 1906-07 compared with
the PREVIOUS YEAR.

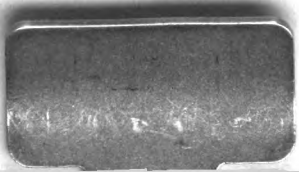
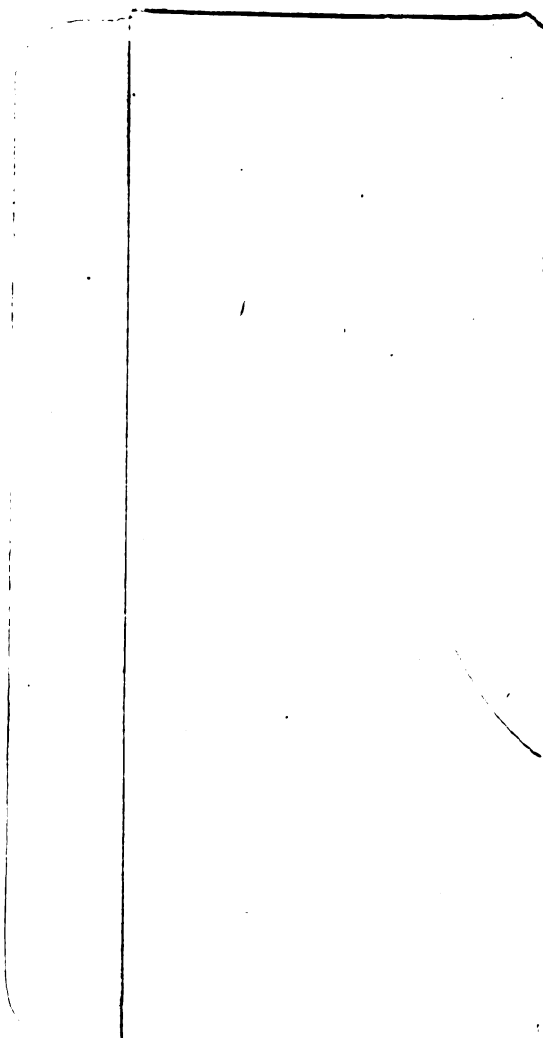
	1905-06.	1906-07.	Increase per cent.	For details see pages
Postal.				
Postal packets delivered - -	4,584,500,000	4,758,100,000	3·79	32-36
Parcels delivered - -	101,682,090	104,819,000	3·08	37
Registered Letters and Parcels - -	19,682,008	19,501,618	Dec. ·92	38-40
Express Delivery Services - -	1,578,746	1,673,258	Inc. 5·99	41
Undelivered Postal Packets, &c. -	27,099,174	29,766,394	9·84	60
Foreign and Colonial Mails :—				
Letters, &c. :—				
Despatched (Weight) - -	* Lb.26,840,000	† Lb.28,490,000	6·15	} 42-43
Received (Weight) - -	* Lb.11,876,000	† Lb.12,477,000	5·06	
Parcels :—				
Despatched (Number) - -	2,474,003	2,575,891	4·12	} 44-47
Received (Number) - -	1,431,035	1,471,785	2·85	
Savings Bank transactions :—				
Deposits :—				
Number - - - -	*16,320,204	†17,997,023	10·27	} 66
Amount - - - -	*£42,300,617	†£43,980,579	3·97	
Withdrawals :—				
Number - - - -	*7,155,283	†8,629,749	20·61	} 66
Amount - - - -	*£42,096,037	†£43,763,002	3·96	
Money Orders :—				
Number - - - -	13,596,153	13,819,162	1·64	} 74-82
Amount - - - -	£44,612,785	£46,335,883	3·86	
Postal Orders :—				
Number - - - -	97,271,000	102,247,000	5·12	} 84-86
Amount - - - -	£38,770,000	£40,878,000	5·44	
Telegraph.				
Telegrams - - - -	89,478,000	89,493,000	·02	61-62
Telephone Trunk Calls - -	17,974,039	19,803,363	10·18	87
Postal and Telegraph Combined.				
Gross Revenue - - - -	£21,215,403	£21,730,272	2·43	} 95-101
Gross Expenditure - - - -	£16,741,211	£17,311,072	3·40	
Net Revenue - - - -	£4,474,192	£4,419,200	Dec. 1·23	} 55-56
Staff (all classes) - - - -	195,432	199,178	Inc. 1·92	

* Year 1905.

† Year 1906.

* Year 1905.

† Year 1906.



UNIVERSITY OF MINNESOTA
wils 53-55
354.424 G79
Great Britain. Post Office.
Report of the Postmaster General on the



3 1951 002 272 343 1

**WILSON
ANNEX
AISLE 71**